

LOC/DME I-GPR <b>109.15</b> Chan 28 (Y)	APP CRS <b>107°</b>	Rwy ldg TDZE Apt Elev	<b>6725</b> <b>17</b> <b>17</b>
---	------------------------	-----------------------------	---------------------------------------

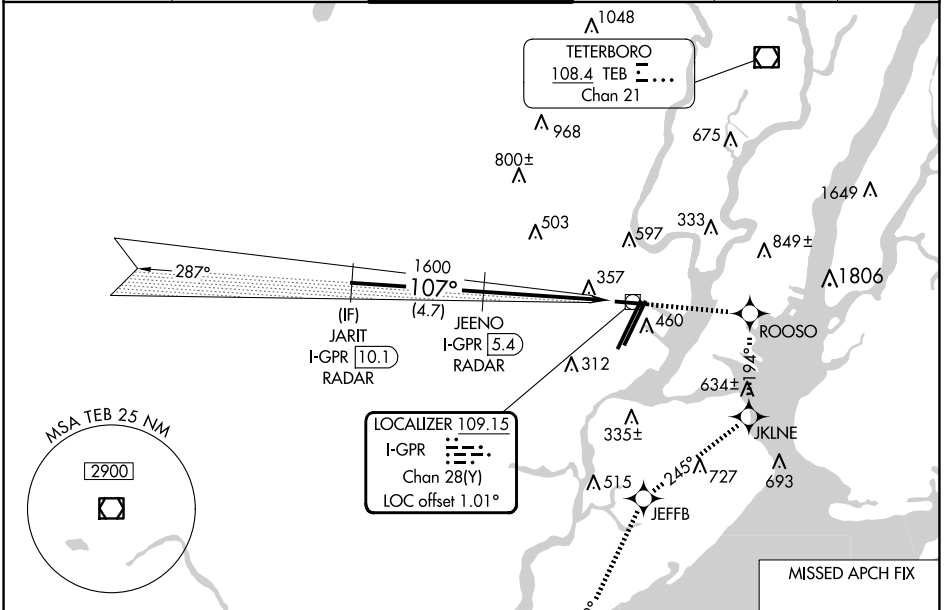
# ILS or LOC RWY 11

NEWARK LIBERTY INTL (EWR)

RNP APCH - GPS.  
DME required. RADAR required.  
 ⚠ Circling NA south of Rwy 11-29. When Circling to Rwy 29 at night, operational VGSi required, remain on or above VGSi glidepath until threshold. Rwy 11 helicopter visibility reduction below ¼ SM NA.

MISSED APPROACH: (Do not exceed 230K until JKLINE)  
Climb to 2000 direct ROOSO and right turn on track 194° to JKLINE and right turn on track 245° to JEFFB and left turn on track 218° to RAATO and hold.

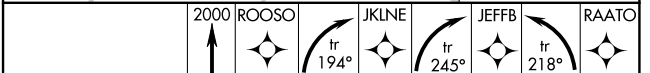
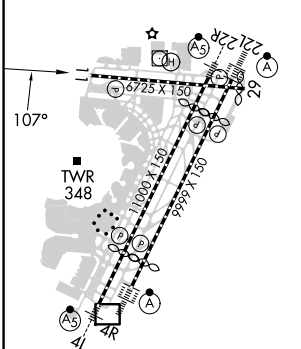
D-ATIS <b>115.7 134.825</b>	NEWARK APP CON <b>128.55 379.9</b>	NEWARK TOWER <b>118.3 257.6</b>	GND CON <b>121.8</b>	CLNC DEL <b>118.85</b>	CPDLC
--------------------------------	---------------------------------------	------------------------------------	-------------------------	---------------------------	-------



NE-2, 15 MAY 2025 to 12 JUN 2025

NE-2, 15 MAY 2025 to 12 JUN 2025

ELEV 17	<b>D</b>	TDZE 17
---------	----------	---------



JARIT I-GPR [10.1] RADAR	JEENO I-GPR [5.4] RADAR	ROOSO 2000	JKLINE tr 194°	JEFFB tr 245°	RAATO tr 218°
VGSi and ILS glidepath not coincident (VGSi Angle 3.00/TCH 60).					
1600	1600	1600	I-GPR [2.2]	I-GPR [0.6]	
GS 3.00° TCH 57		4.7 NM	3.2 NM	1.6 NM	

FAF to MAP 4.8 NM	A	B	C	D
S- ILS 11	618-1¾ 601 (700-1¾)			
S- LOC 11	660/55	643 (700-1)	660-1½	643 (700-1½)
<b>C</b> CIRCLING	660-1	643 (700-1)	900-2½ 883 (900-2½)	900-2¾ 883 (900-2¾)