

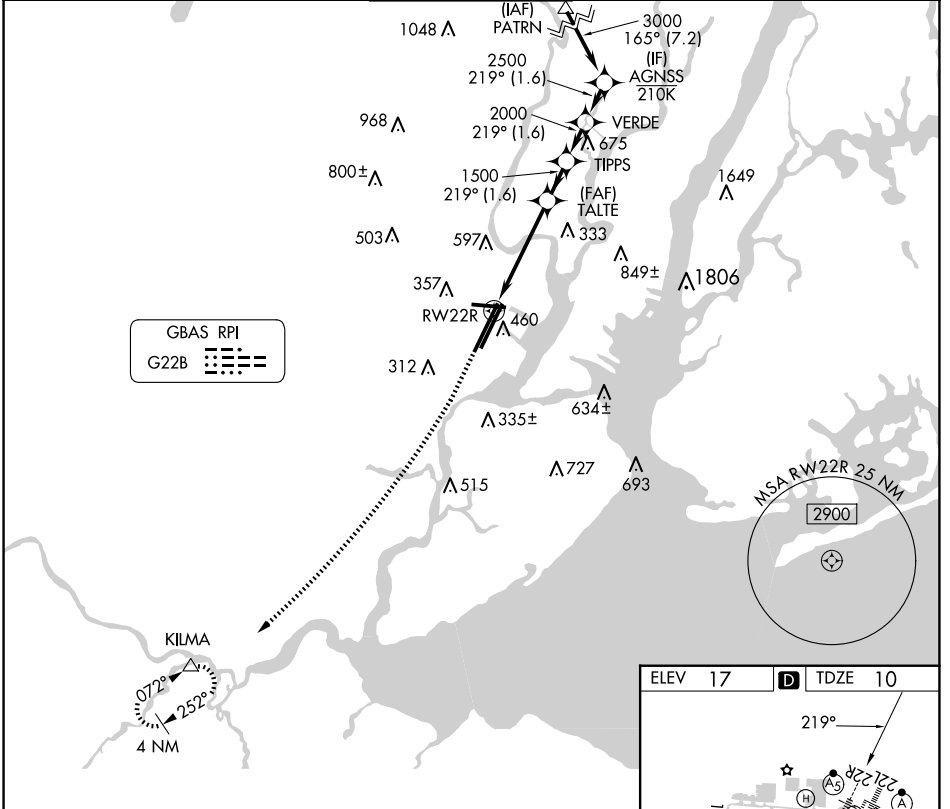
GBAS CH 20672 G22B	APP CRS 219°	Rwy Idg TDZE 10 Apt Elev 17	9559
--	------------------------	---	-------------

GLS RWY 22R

NEWARK LIBERTY INTL (EWR)

RNP APCH - GPS.		MALSR	MISSED APPROACH: Climb to 2000, then climbing right turn to 3000 direct KILMA and hold.	
Autopilot coupled approach NA below 210.				

D-ATIS 115.7 134.825	NEWARK APP CON 128.55 379.9	NEWARK TOWER 118.3 257.6	GND CON 121.8	CLNC DEL 118.85	CPDLC
--------------------------------	---------------------------------------	------------------------------------	-------------------------	---------------------------	-------



NE-2, 15 MAY 2025 to 12 JUN 2025

NE-2, 15 MAY 2025 to 12 JUN 2025

