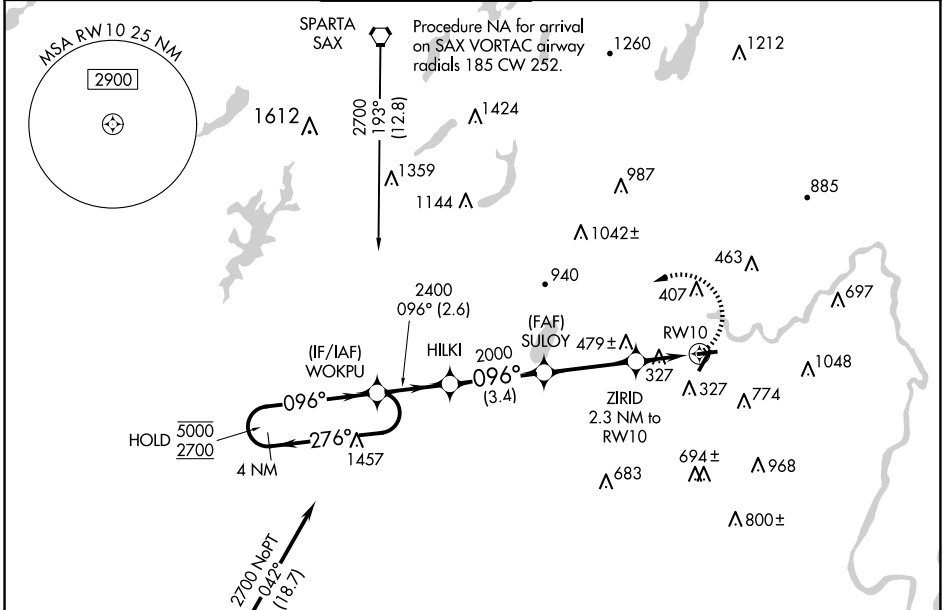


WAAS CH 81922 W10A	APP CRS 096°	Rwy Idg TDZE Apt Elev	2822 172 172
--	------------------------	-----------------------------	---

RNAV (GPS) RWY 10

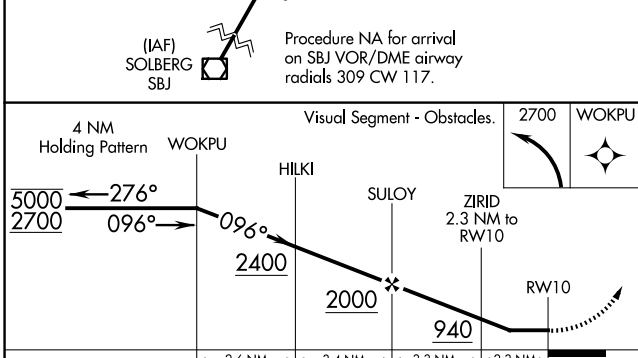
ESSEX COUNTY (CDW)

RNP APCH.		MISSED APPROACH: Climbing left turn to 2700 direct WOKPU and hold.			
▼ Procedure NA at night.	▲ Rwy 10 helicopter visibility reduction below 1 SM NA.				
ATIS 135.5	NEWARK APP CON 127.6 379.9	CALDWELL TOWER ★ 119.8 (CTAF) 0	GND CON 121.9	CLNC DEL 121.1	UNICOM 122.95



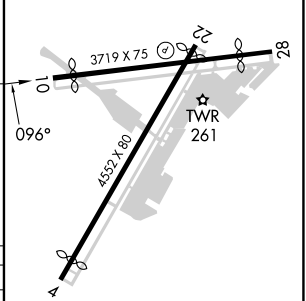
NE-2, 15 MAY 2025 to 12 JUN 2025

NE-2, 15 MAY 2025 to 12 JUN 2025



ELEV 172	TDZE 172
----------	----------

CATEGORY	A	B	C	D
LP MDA	600-1	428 (500-1)	600-1¼	428 (500-1¼)
LNAV MDA	740-1	568 (600-1)	740-1½	568 (600-1½)
CIRCLING	960-1 788 (800-1)	1040-1¼ 868 (900-1¼)	1100-2¾ 928 (1000-2¾)	1400-3 1228 (1300-3)



- REIL Rwy 22
- MIRL Rwy 10-28
- HIRL Rwy 4-22