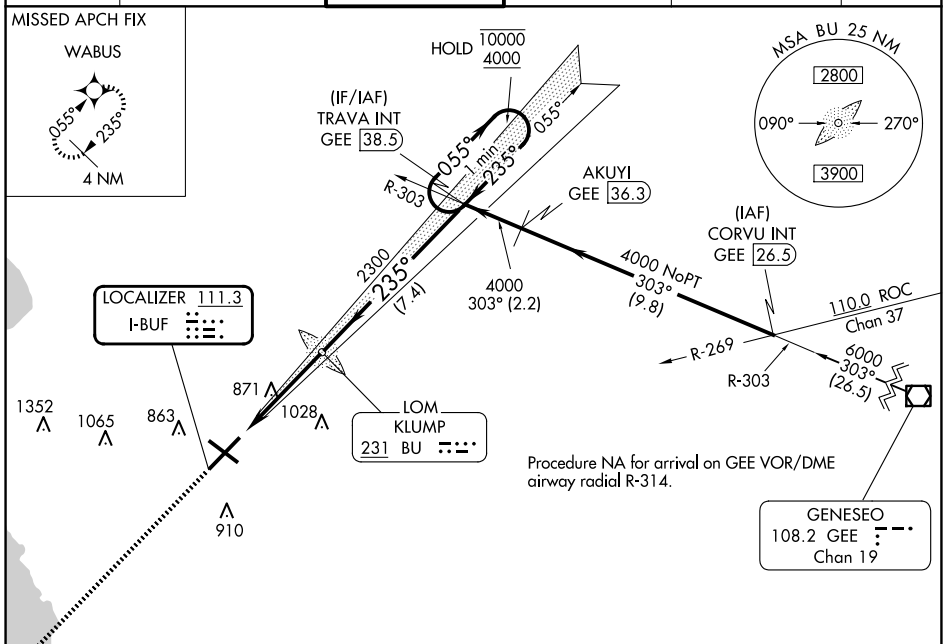


LOC I-BUF <b>111.3</b>	APP CRS <b>235°</b>	Rwy Idg TDZE Apt Elev	<b>7569</b> <b>726</b> <b>727</b>
---------------------------	------------------------	-----------------------------	---

# ILS or LOC RWY 23

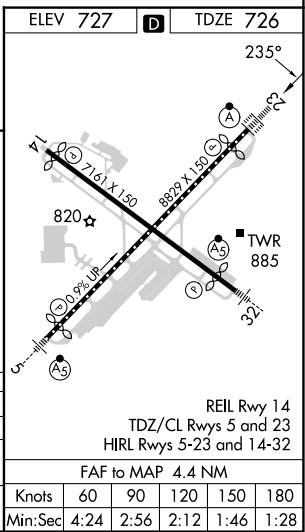
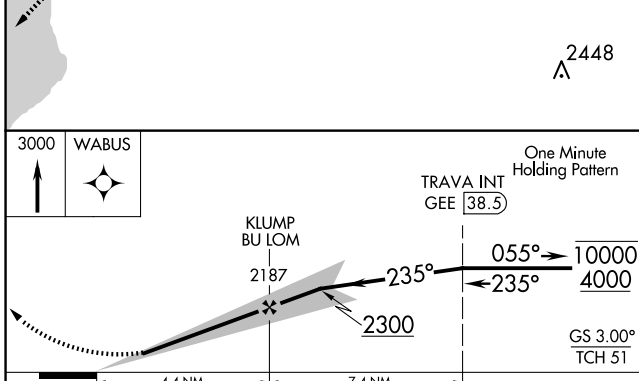
BUFFALO NIAGARA INTL (BUF)

DME required. RNP APCH - GPS. ADF required for LOC only.		ALSF-2	MISSED APPROACH: Climb to 3000 direct WABUS and hold.		
▼ For inop ALS, increase S-LOC 23 Cats C and D visibility to RVR 6000.					
D-ATIS <b>135.35</b>	BUFFALO APP CON <b>126.15 263.125</b>	BUFFALO TOWER <b>120.5 257.8</b>	GND CON <b>133.2 257.8</b>	CLNC DEL <b>124.7 257.8</b>	CPDLC



NE-2, 15 MAY 2025 to 12 JUN 2025

NE-2, 15 MAY 2025 to 12 JUN 2025



CATEGORY	A	B	C	D
S-ILS 23		926/18	200 (200-½)	
S-LOC 23	1140/24	414 (500-½)	1140/40	414 (500-¾)
<b>C</b> CIRCLING	1200-1	473 (500-1)	1220-1½ 493 (500-1½)	1340-2 613 (700-2)