

APP CRS	Rwy Idg	7345
144°	TDZE	119
	Apt Elev	153

RNAV (GPS) RWY 14

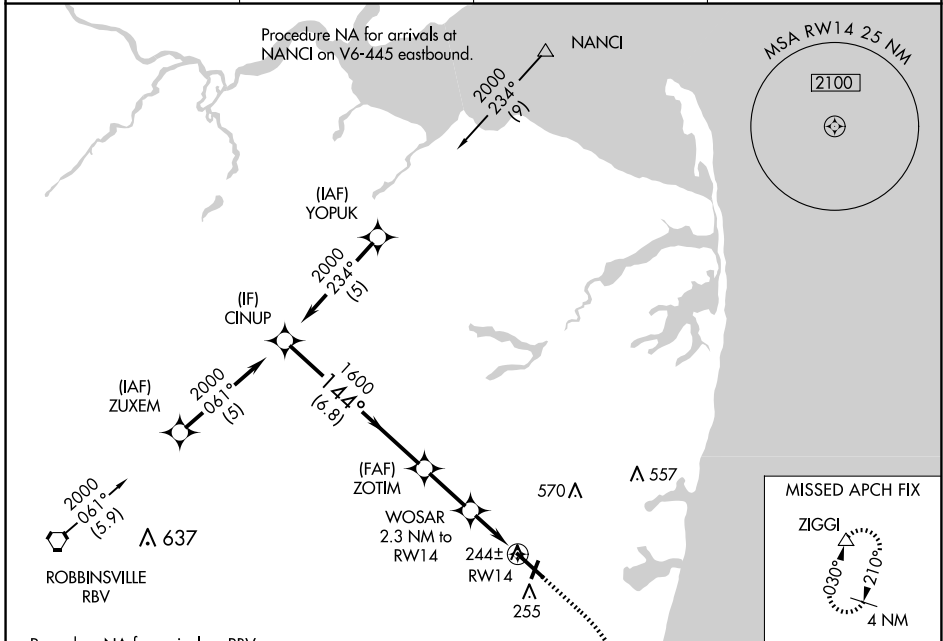
MONMOUTH EXEC (BLM)

RNP APCH.

⚠ Circling Rwy 3, 21 NA at night. Rwy 14 helicopter visibility reduction below 3/4 SM NA. VDP NA when using Lakehurst altimeter setting. When local altimeter setting not received, use Lakehurst altimeter setting: increase all MDA 40 feet and LNAV Cats C/D visibility 1/8 SM and Circling Cat C/D visibility 1/4 SM.

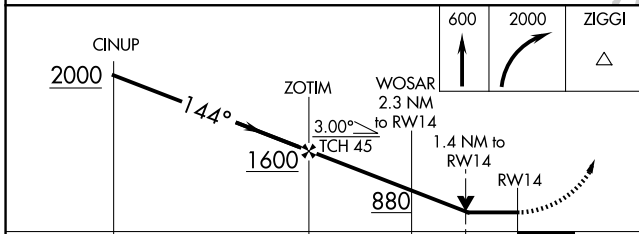
MISSED APPROACH: Climb to 600 then climbing right turn to 2000 direct ZIGGI and hold.

AWOS-3PT 121.625	MC GUIRE APP CON 126.475 363.8	CLNC DEL 126.15	UNICOM 123.0 (CTAF)
----------------------------	--	---------------------------	-------------------------------

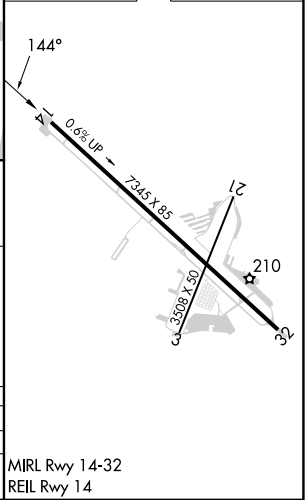


Procedure NA for arrival on RBV
VORTAC airway radials 001 CW 122.

ELEV 153	TDZE 119
----------	----------



	6.8 NM		2.2 NM		0.9		1.4	
CATEGORY	A	B	C	D				
LNAV MDA	500-1	381 (400-1)	500-1 1/8	381 (400-1 1/8)				
CIRCLING	560-1 407 (500-1)	620-1 467 (500-1)	880-2 727 (800-2)	880-2 1/4 727 (800-2 1/4)				



NE-2, 15 MAY 2025 to 12 JUN 2025

NE-2, 15 MAY 2025 to 12 JUN 2025