

WAAS CH 93915 W34A	APP CRS 340°	Rwy Idg TDZE 1600 Apt Elev 1636
--	------------------------	---

RNAV (GPS) RWY 34

GREATER BINGHAMTON/EDWIN A LINK FLD (BGM)

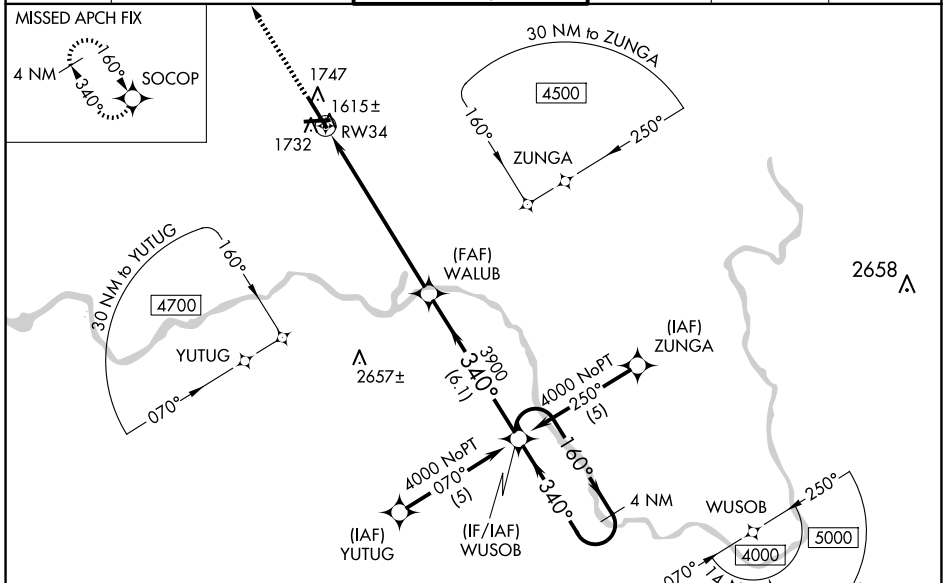
RNP APCH.

▼ For uncompensated Baro-VNAV systems, LNAV/VNAV NA below -18°C (0°F) or above 46°C (114°F). When local altimeter setting not received, use Ithaca altimeter setting and increase all DA 138 feet and all MDA 140 feet, increase LPV all Cats, LNAV Cats C and D and Circling Cat C and D visibility ½ SM, and LNAV/VNAV all Cats visibility ½ SM. For inoperative MALSR when using Ithaca altimeter setting increase LPV all Cats visibility to RVR 6000. Baro-VNAV and VDP NA when using Ithaca altimeter setting.



MISSED APPROACH:
Climb to 3900 direct SOCOP and hold.

ATIS 128.15	BINGHAMTON APP CON * 118.6 257.625	BINGHAMTON TOWER * 119.3 (CTAF) 0 239.25	GND CON 121.9	CLNC DEL 125.05	UNICOM 122.95
-----------------------	--	--	-------------------------	---------------------------	-------------------------



NE-2, 15 MAY 2025 to 12 JUN 2025

NE-2, 15 MAY 2025 to 12 JUN 2025

ELEV 1636	D	TDZE 1600
-----------	----------	-----------

