


VORTAC ART <b>109.8</b> Chan <b>35</b>	APP CRS <b>043°</b>	Rwy Idg <b>4784</b> TDZE <b>319</b> Apt Elev <b>331</b>
--	------------------------	---

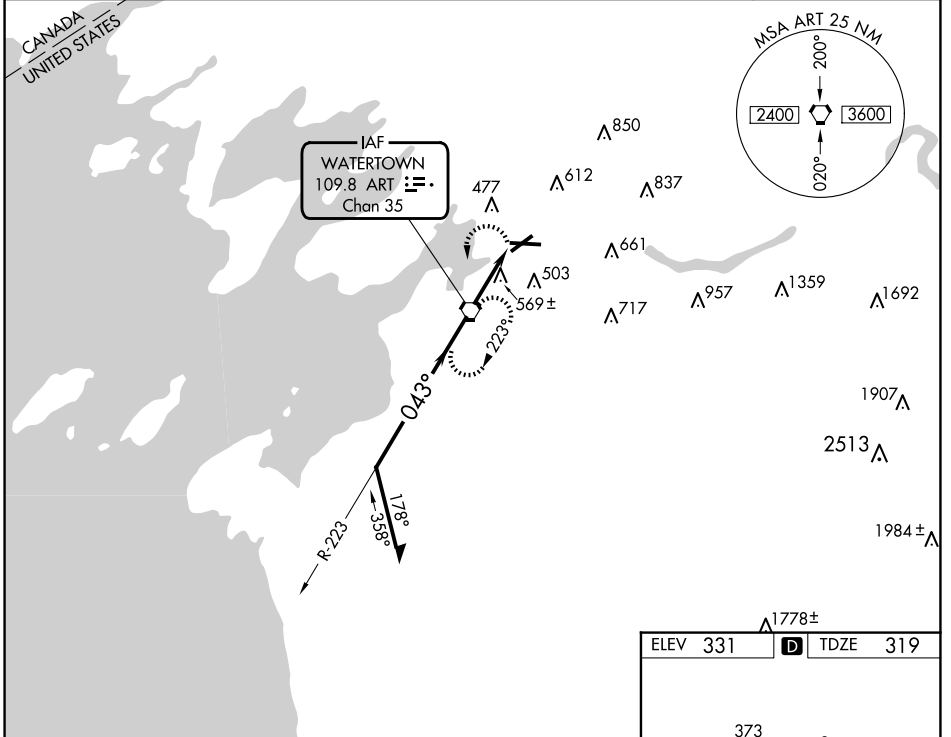
# VOR RWY 7

WATERTOWN INTL (ART)

**⚠** Inop table does not apply. When local altimeter setting not received, use Fort Drum altimeter setting and increase all MDAs 100 feet and visibility S-7 Cat C/D and Circling Cat D ¼ SM and Circling Cat C ½ SM. VDP NA when using Fort Drum altimeter setting.

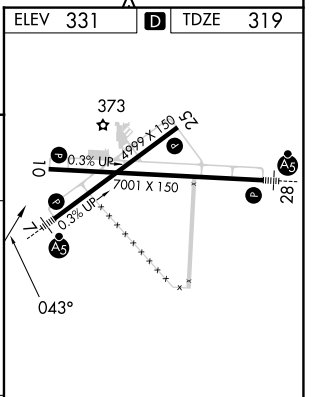
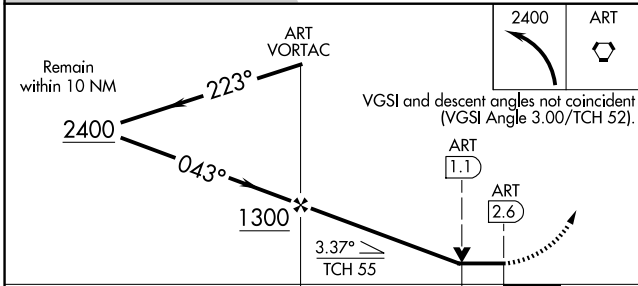
**MALS**  MISSED APPROACH: Climbing left turn to 2400 direct ART VORTAC and hold, continue climb-in-hold to 2400.

ASOS <b>132.325</b>	KGTB ATIS <b>119.525</b>	WHEELER-SACK APP CON <b>124.875 307.125</b>	CLNC DEL <b>120.8</b>	UNICOM <b>123.0 (CTAF)</b>
------------------------	-----------------------------	--	--------------------------	-------------------------------



NE-2, 15 MAY 2025 to 12 JUN 2025

NE-2, 15 MAY 2025 to 12 JUN 2025



CATEGORY	A	B	C	D
S-7	880-1	561 (600-1)	880-1½	561 (600-1½)
<b>C</b> CIRCLING	960-1	629 (700-1)	980-1¾ 649 (700-1¾)	1080-2½ 749 (800-2½)

ELEV 331	<b>D</b> TDZE 319
HIRL Rwy 7-25 <b>Ⓛ</b> MIRL Rwy 10-28 <b>Ⓛ</b>	
FAF to MAP 2.6 NM	
Knots	60 90 120 150 180
Min:Sec	2:36 1:44 1:18 1:02 0:52