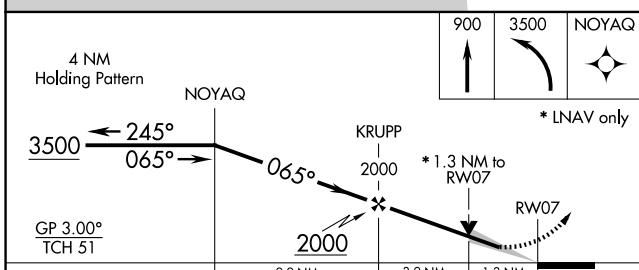
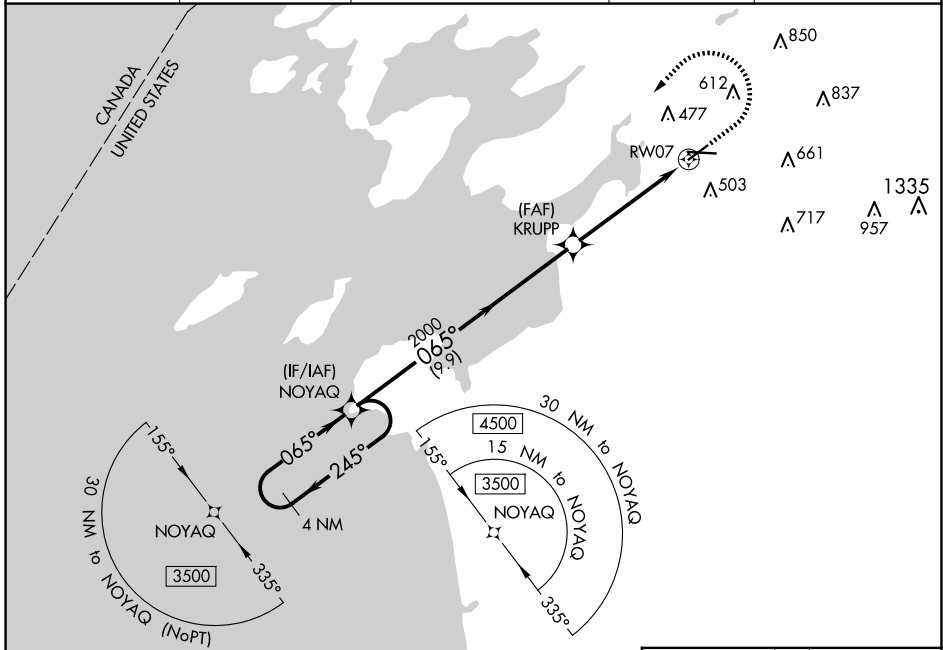


WAAS CH 82510 W07A	APP CRS 065°	Rwy Idg TDZE Apt Elev	4784 319 331
--	------------------------	-----------------------------	---

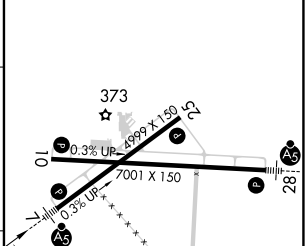
RNAV (GPS) RWY 7

WATERTOWN INTL (ART)

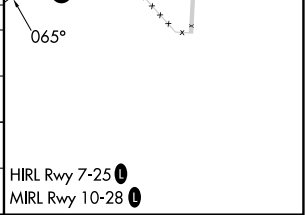
RNP APCH.		MALSR		MISSED APPROACH: Climb to 900 then climbing left turn to 3500 direct NOYAQ and hold.	
<p>▽ ▲</p> <p>For inop ALS, increase LPV, LNAV/VNAV visibilities to 3/4 SM and LNAV Cat C/D visibilities to 1 3/8 SM. For uncompensated Baro-VNAV systems, LNAV/VNAV NA below -18°C or above 54°C.</p>					
ASOS 132.325	KGTB ATIS 119.525	WHEELER-SACK APP CON 124.875 307.125		CLNC DEL 120.8	UNICOM 123.0 (CTAF)



ELEV	331	TDZE	319
------	-----	------	-----



CATEGORY	A	B	C	D
LPV DA		519-1/2	200 (200-1/2)	
LNAV/VNAV DA		578-1/2	259 (300-1/2)	
LNAV MDA	780-1/2	461 (500-1/2)	780-1	461 (500-1)
C CIRCLING	960-1	629 (700-1)	980-1 3/4 649 (700-1 3/4)	1080-2 1/2 749 (800-2 1/2)



NE-2, 15 MAY 2025 to 12 JUN 2025

NE-2, 15 MAY 2025 to 12 JUN 2025