

WAAS CH 53631 W22A	APP CRS 218°	Rwy ldg TDZE Apt Elev	6145 68 75
----------------------------------------	------------------------	-----------------------------	---------------------------------------

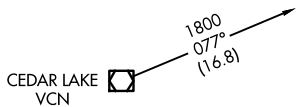
RNAV (GPS) RWY 22

ATLANTIC CITY INTL (ACY)

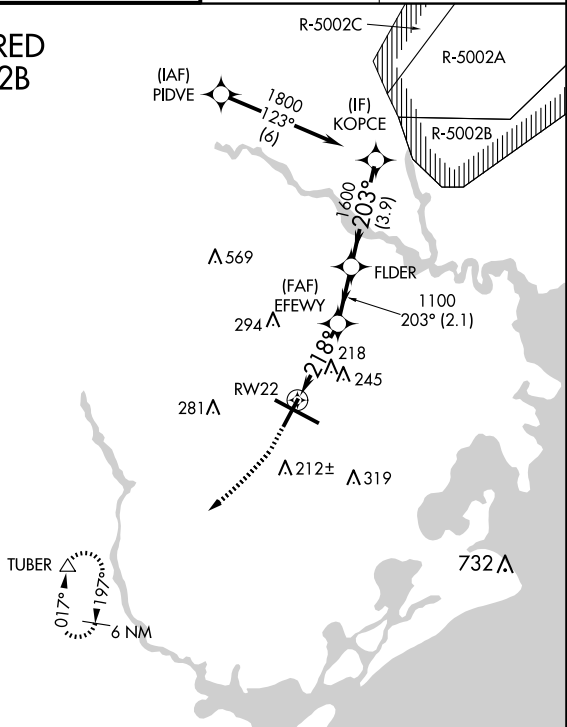
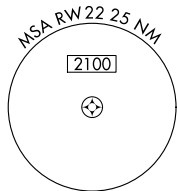
RNP APCH - GPS.	MISSED APPROACH: Climb to 600 then climbing right turn to 2000 direct TUBER and hold.
<p>▼ For uncompensated Baro-VNAV systems, LNAV/VNAV NA below -14°C (7°F) or above 54°C (130°F). Rwy 22 helicopter visibility reduction below ¼ SM NA.</p>	

ATIS 125.725 316.15	ATLANTIC CITY APP CON 124.6 327.125	ATLANTIC CITY TOWER 120.3 239.0	GND CON 121.9 284.6	CLNC DEL 127.85 353.775
-------------------------------	-----------------------------------------------	-------------------------------------------	-------------------------------	-----------------------------------

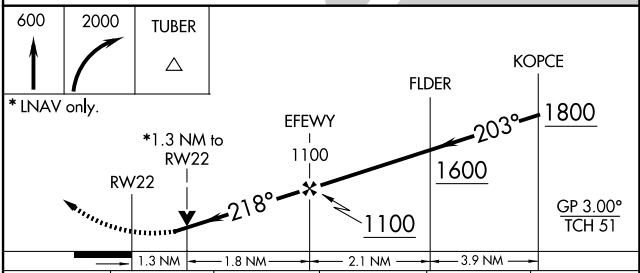
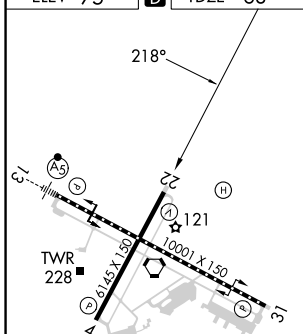
RADAR REQUIRED WHEN R-5002B IS ACTIVE.



Procedure NA for arrival on VCN VORTAC
airway radials 066 CW 160.



ELEV 75	D	TDZE 68
---------	----------	---------



CATEGORY	A	B	C	D	E
LPV DA	364-1		296 (300-1)		
LNAV/VNAV DA	356-7/8		288 (300-7/8)		
LNAV MDA	520-1 452 (500-1)		520-1 1/8 452 (500-1 1/8)		
CIRCLING	540-1 465 (500-1)	600-1 525 (600-1)	620-1 1/2 545 (600-1 1/2)	640-2 565 (600-2)	760-2 1/2 685 (700-2 1/2)

TDZ/CL Rwy 13
HIRL Rwy 4-22 and 13-31
REIL Rwy 31

NE-2, 15 MAY 2025 to 12 JUN 2025

NE-2, 15 MAY 2025 to 12 JUN 2025