

WAAS CH <b>78231</b> <b>W04A</b>	APP CRS <b>038°</b>	Rwy Idg TDZE Apt Elev	<b>6145</b> <b>68</b> <b>75</b>
--	------------------------	-----------------------------	---------------------------------------

# RNAV (GPS) RWY 4

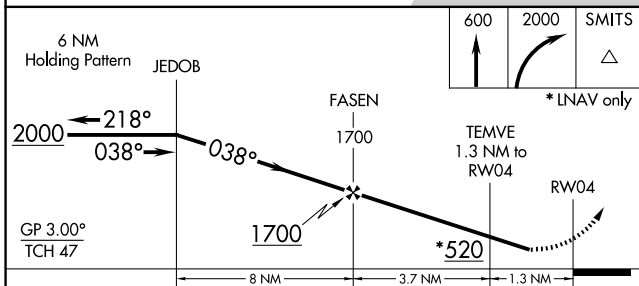
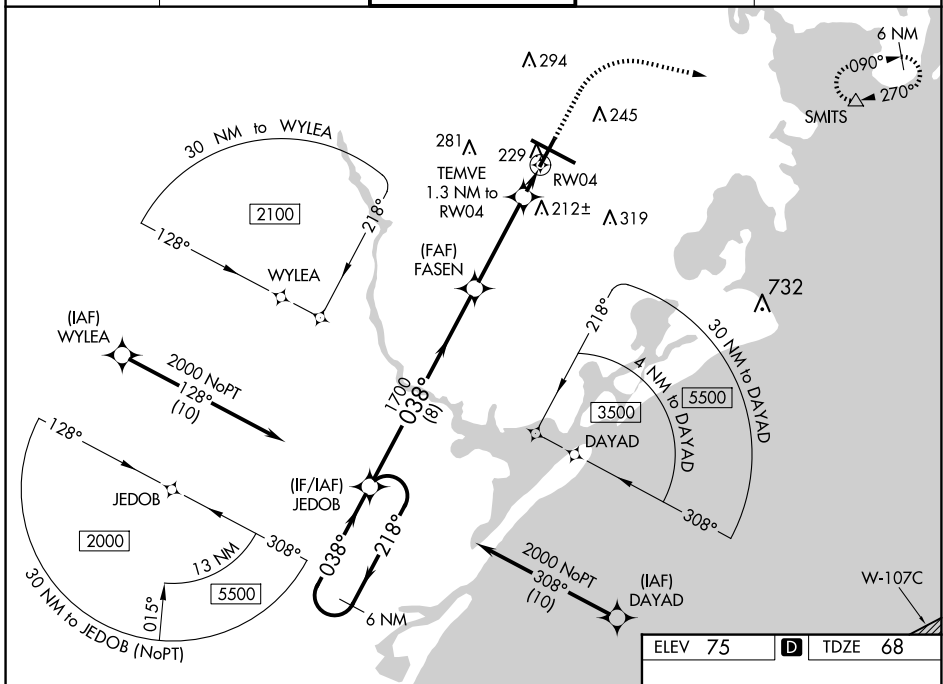
ATLANTIC CITY INTL (ACY)

RNP APCH - GPS.

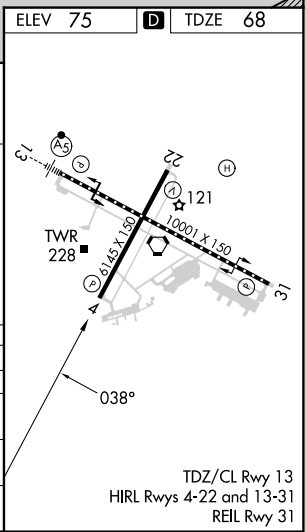
**▼** For uncompensated Baro-VNAV systems, LNAV/VNAV NA below -13°C (9°F) or above 54°C (130°F). Rwy 4 helicopter visibility reduction below ¾ SM NA.

**MISSED APPROACH:** Climb to 600 then climbing right turn to 2000 direct SMITS and hold.

ATIS <b>125.725 316.15</b>	ATLANTIC CITY APP CON <b>124.6 327.125</b>	ATLANTIC CITY TOWER <b>120.3 239.0</b>	GND CON <b>121.9 284.6</b>	CLNC DEL <b>127.85 353.775</b>
-------------------------------	---	---	-------------------------------	-----------------------------------



CATEGORY	A	B	C	D	E
LPV DA	318-1		250 (300-1)		
LNAV/VNAV DA	534-1½		466 (500-1½)		
LNAV MDA	480-1	412 (500-1)	480-1½	412 (500-1½)	
CIRCLING	540-1 465 (500-1)	600-1 525 (600-1)	620-1½ 545 (600-1½)	640-2 565 (600-2)	760-2½ 685 (700-2½)



NE-2, 15 MAY 2025 to 12 JUN 2025

NE-2, 15 MAY 2025 to 12 JUN 2025