

WAAS CH 99724 W06A	APP CRS 059°	Rwy Idg TDZE Apt Elev	2598 670 670
--	------------------------	-----------------------------	---

RNAV (GPS) RWY 6

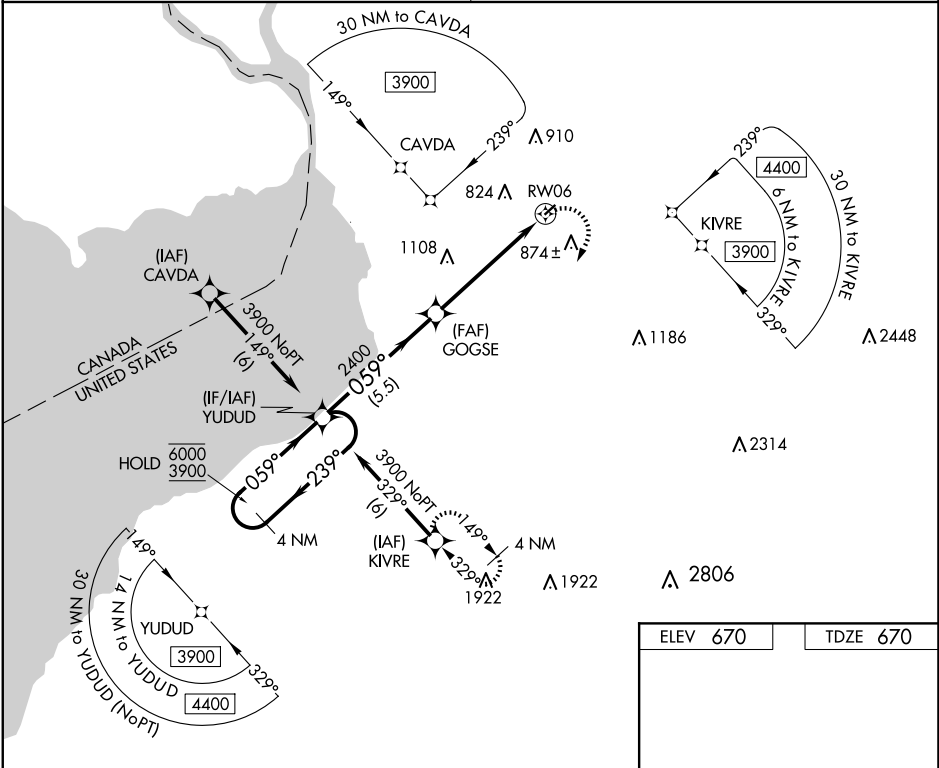
BUFFALO AIRFIELD (9G~~0~~)

RNP APCH.

Procedure NA at night. Rwy 6 helicopter visibility reduction below 1 SM NA. Use Buffalo Niagara Intl altimeter setting.

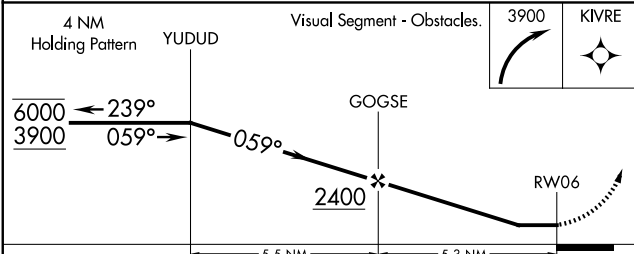
MISSED APPROACH: Climbing right turn to 3900 direct KIVRE and hold, continue climb in hold to 3900.

BUFFALO APP CON 126.15 263.125	UNICOM 122.975 (CTAF) 0
--	-----------------------------------



NE-2, 15 MAY 2025 to 12 JUN 2025

NE-2, 15 MAY 2025 to 12 JUN 2025



ELEV 670	TDZE 670
----------	----------

REIL Rws 6 and 24 0
MIRL Rwy 6-24 0

CATEGORY	A	B	C	D
LP MDA	1180-1	510 (600-1)	NA	
LNAV MDA	1180-1	510 (600-1)	NA	