

APP CRS	Rwy Idg	2729
188°	TDZE	196
	Apt Elev	196

RNAV (GPS) RWY 19

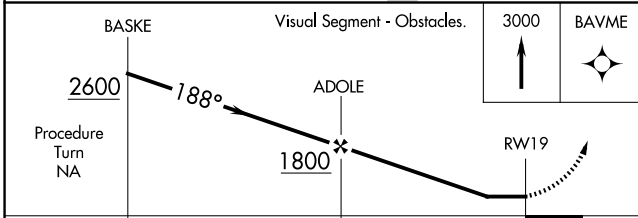
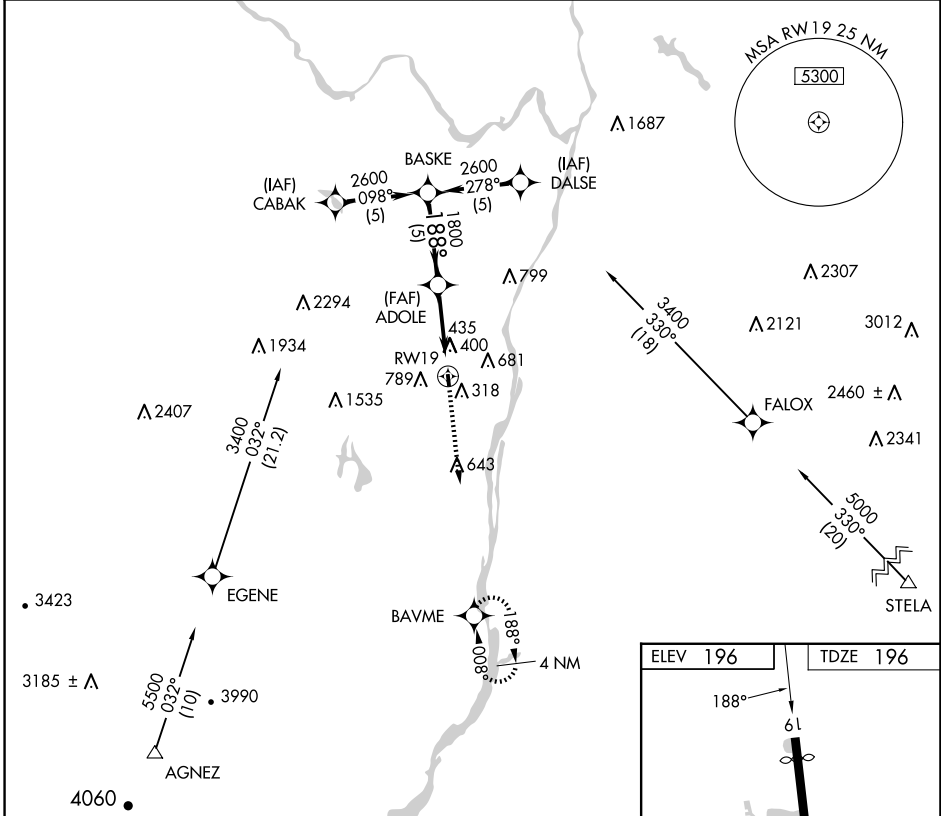
SOUTH ALBANY (4B0)

RNP APCH.
 ▼ Use Albany Intl altimeter setting. Procedure NA at night.
 ▲ NA Rwy 19 helicopter visibility reduction below 1 SM NA.

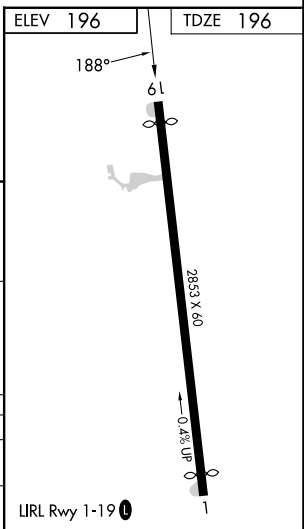
MISSED APPROACH: Climb to 3000 direct BAVME WP and hold.

ALBANY APP CON
118.05 263.075

CTAF
122.9 0



CATEGORY	A	B	C	D
LNAV MDA	740-1	544 (600-1)		NA
CIRCLING	840-1 644 (700-1)	1180-1½ 984 (1000-1½)		NA



NE-2, 15 MAY 2025 to 12 JUN 2025

NE-2, 15 MAY 2025 to 12 JUN 2025