

APP CRS	Rwy Idg	3194
237°	TDZE	87
	Apt Elev	87

RNAV (GPS) RWY 24

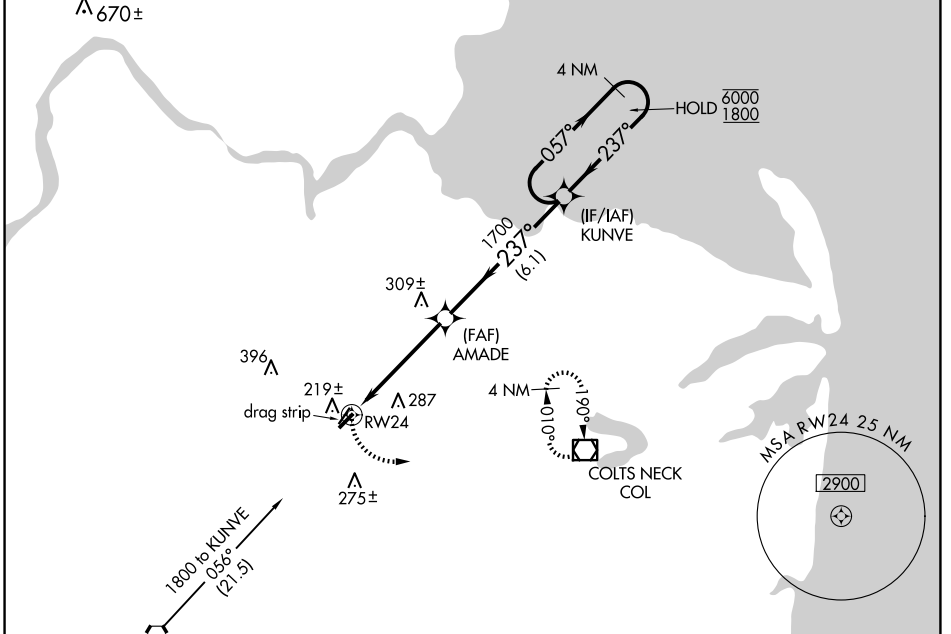
OLD BRIDGE (3N6)

RNP APCH - GPS.

▼ Procedure NA at night. Rwy 24 helicopter visibility reduction below 1 SM NA.
▲ NA Use Belmar/Farmingdale altimeter setting; when not received, use Wrightstown altimeter setting and increase all MDA 20 feet.

MISSED APPROACH: Climbing left turn to 2000 direct COL VOR/DME and hold.

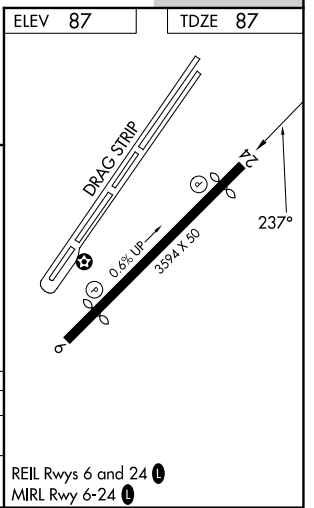
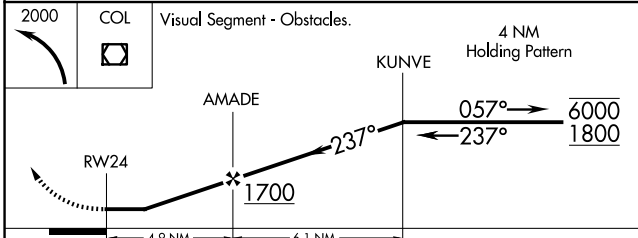
BLM AWOS-3PT 121.625	MC GUIRE APP CON 126.475 363.8	GCO 121.725	UNICOM 123.075 (CTAF) 📻
--------------------------------	--	-----------------------	--



NE-2, 15 MAY 2025 to 12 JUN 2025

NE-2, 15 MAY 2025 to 12 JUN 2025

ELEV 87	TDZE 87
----------------	----------------



CATEGORY	A	B	C	D
LNAV MDA	620-1	533 (600-1)	NA	
CIRCLING	620-1 533 (600-1)	640-1 553 (600-1)	NA	