

APP CRS	Rwy Idg	<b>2994</b>
<b>057°</b>	TDZE	<b>87</b>
	Apt Elev	<b>87</b>

# RNAV (GPS) RWY 6

OLD BRIDGE (3N6)

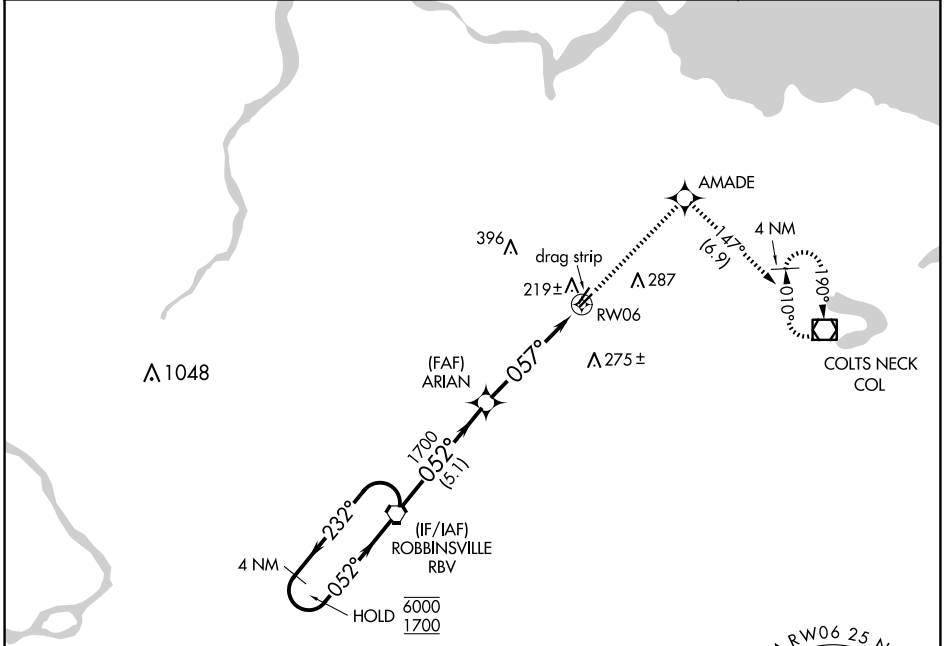
RNP APCH.

**⚠** Procedure NA at night. Rwy 6 helicopter visibility reduction below 1 SM NA.

**⚠ NA** Use Belmar/Farmingdale altimeter setting; when not received, use Wrightstown altimeter setting and increase all MDA 20 feet.

MISSED APPROACH: Climb to 2000 direct AMADE and on track 147° to COL VOR/DME and hold.

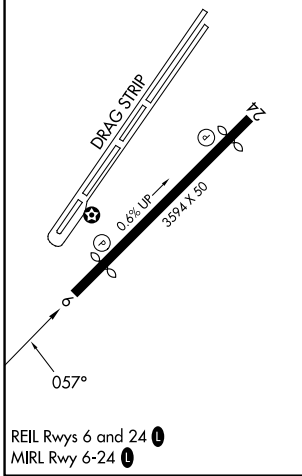
BLM AWOS-3PT <b>121.625</b>	MC GUIRE APP CON <b>126.475 363.8</b>	GCO <b>121.725</b>	UNICOM <b>123.075 (CTAF)</b> <b>📻</b>
--------------------------------	--	-----------------------	--



NE-2, 15 MAY 2025 to 12 JUN 2025

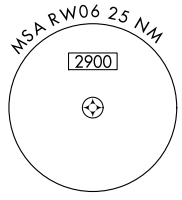
NE-2, 15 MAY 2025 to 12 JUN 2025

ELEV 87	TDZE 87
---------	---------



REIL Rwy 6 and 24 **📻**  
MIRL Rwy 6-24 **📻**

NoPT for arrival on RBV VORTAC airway radials 238 CW 289.



Visual Segment - Obstacles.				2000	AMADE	tr 147°	COL
4 NM Holding Pattern							
RBV VORTAC				ARIAN			RW06
6000	1700	1700					
← 232°		→ 052°		→ 057°			
		5.1 NM		4.9 NM			
CATEGORY	A	B	C	D			
LNAV MDA	660-1 573 (600-1)		NA				