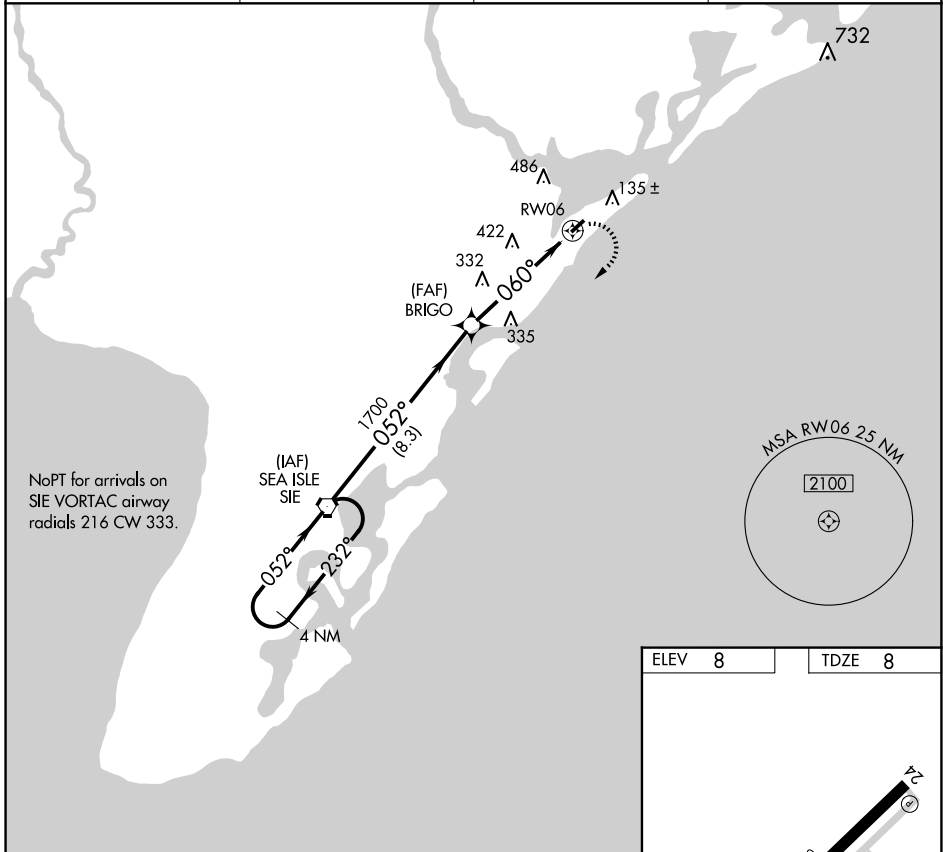


APP CRS	Rwy Idg	2972
060°	TDZE	8
	Apt Elev	8

GPS RWY 6

OCEAN CITY MUNI (26N)

⚠ NA When local altimeter setting not received, use Atlantic City altimeter setting.		MISSED APPROACH: Climbing right turn to 2000 direct SIE VORTAC and hold.	
AWOS-AV 119.775	ATLANTIC CITY APP CON 124.6 327.125	CLNC DEL 133.6	UNICOM 122.7 (CTAF) 0



NE-2, 15 MAY 2025 to 12 JUN 2025

NE-2, 15 MAY 2025 to 12 JUN 2025

NoPT for arrivals on SIE VORTAC airway radials 216 CW 333.

