

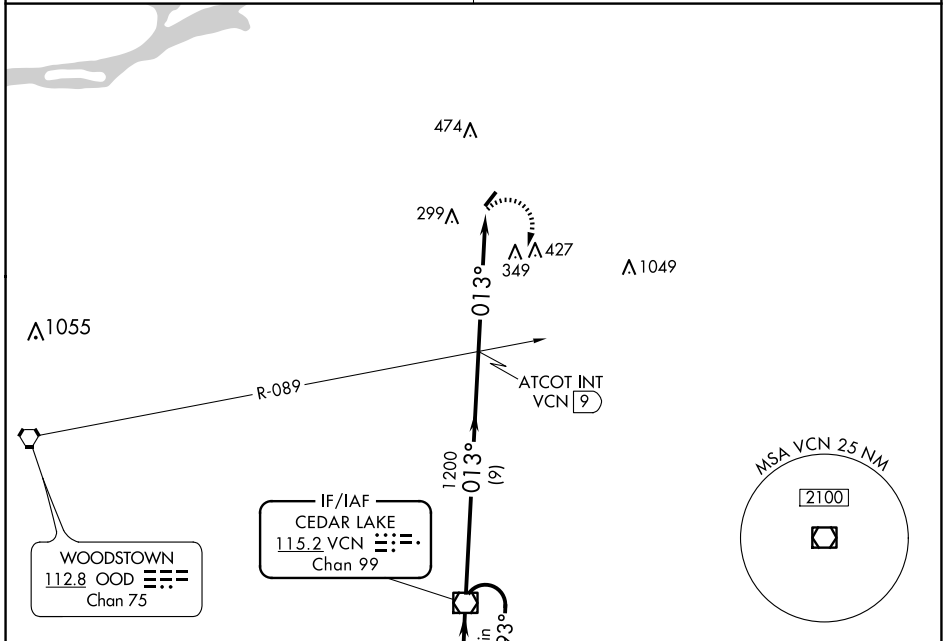
VOR/DME VCN <b>115.2</b> Chan <b>99</b>	APP CRS <b>013°</b>	Rwy Idg TDZE Apt Elev <b>N/A</b> <b>150</b>
---	------------------------	--

**VOR-B**  
PINE VALLEY (19N)

**Procedure NA at night. Visibility reduction by helicopters NA.**  
**NA** Use Mount Holly altimeter setting, when not received, use Philadelphia Intl altimeter setting and increase MDA 20 feet.

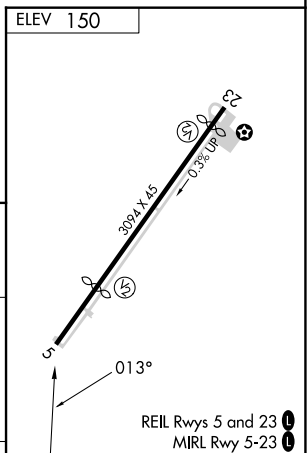
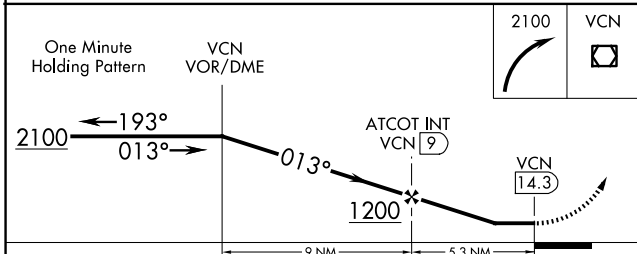
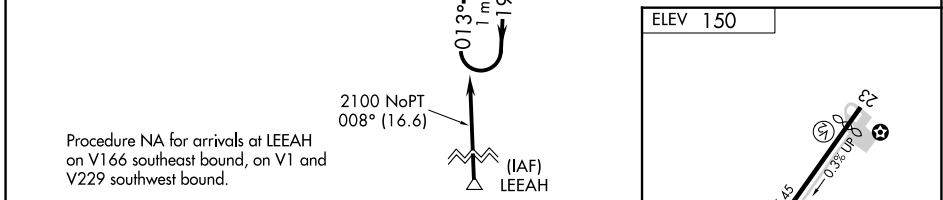
**MISSED APPROACH:** Climbing right turn to 2100 direct VCN VOR/DME and hold.

MC GUIRE APP CON <b>126.475 363.8</b>	UNICOM <b>123.0 (CTAF)</b>
--	-------------------------------



NE-2, 15 MAY 2025 to 12 JUN 2025

NE-2, 15 MAY 2025 to 12 JUN 2025



CATEGORY	A	B	C	D	FAF to MAP 5.3 NM					
CIRCLING	900-1 750 (800-1)		NA		Knots	60	90	120	150	180
					Min:Sec	5:18	3:32	2:39	2:07	1:46