

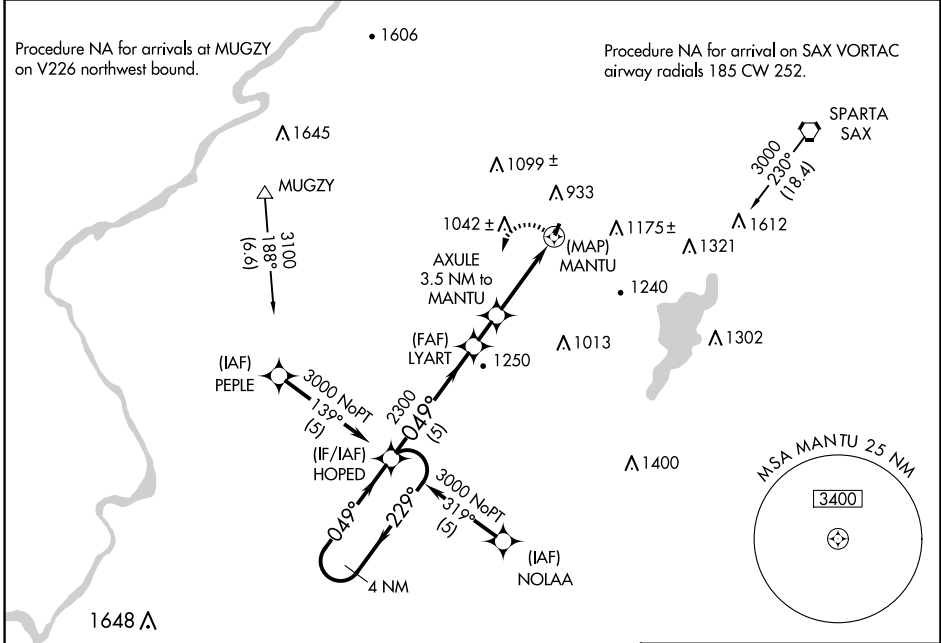
APP CRS	Rwy Idg	<b>1981</b>
<b>049°</b>	TDZE	<b>583</b>
	Apt Elev	<b>583</b>

# RNAV (GPS) RWY 3

AEROFLEX/ANDOVER (12N)

RNP APCH.	MISSED APPROACH:
<p>▼ When local altimeter setting not received, use Caldwell altimeter setting and increase all MDA 120 feet. Procedure NA at night. Rwy 3 helicopter visibility reduction below 1 SM NA.</p>	<p>Climbing left turn to 3000 direct HOPED and hold.</p>

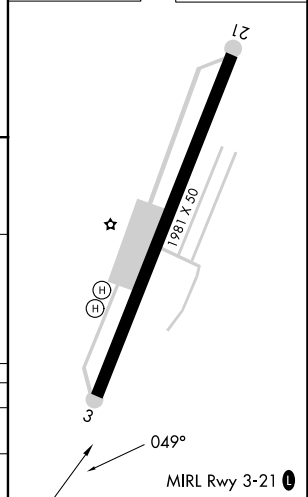
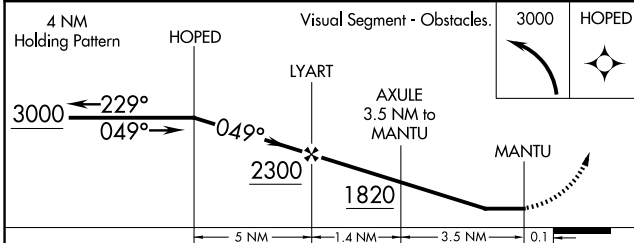
NEWARK APP CON <b>127.6 379.9</b>	UNICOM <b>122.8 (CTAF) 0</b>
--------------------------------------	---------------------------------



NE-2, 15 MAY 2025 to 12 JUN 2025

NE-2, 15 MAY 2025 to 12 JUN 2025

ELEV 583	TDZE 583
----------	----------



CATEGORY	A	B	C	D
LNVA MDA	1340-1757 (800-1)		NA	
CIRCLING	1560-1977 (1000-1¼)		NA	