

LOC/DME	I-OTI	APP CRS	Rwy Idg	2999
108.5		219°	TDZE	172
Chan 22			Apt Elev	172

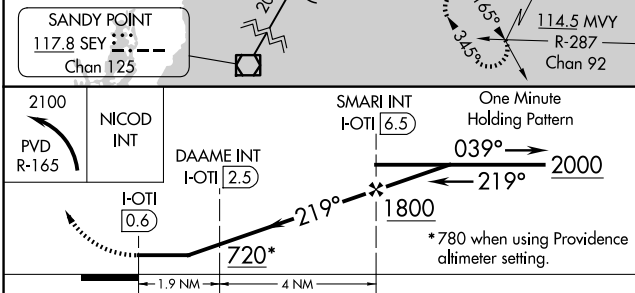
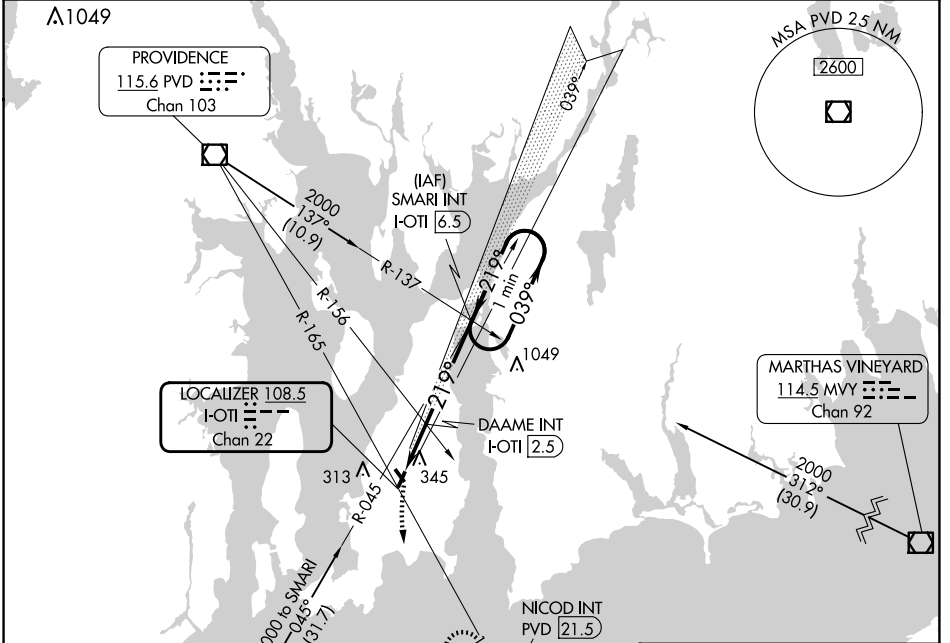
# LOC RWY 22

NEWPORT STATE (UUU)

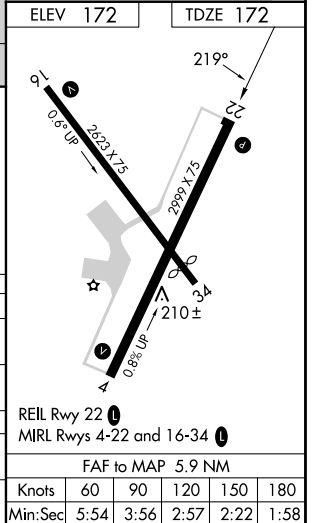
**NA** When local altimeter setting not received, use Providence altimeter setting and increase all MDA 60 feet. Straight-in Rwy 22 NA at night, Circling Rwy 4, 22, 34 NA at night.

MISSED APPROACH: Climbing left turn to 2100 via PVD VOR/DME R-165 to NICOD INT/21.5 DME and hold.

ASOS <b>132.075</b>	PROVIDENCE APP CON* <b>128.7 269.525</b>	CLNC DEL <b>127.25</b>	UNICOM <b>123.05 (CTAF)</b>
------------------------	---	---------------------------	--------------------------------



CATEGORY	A	B	C	D
S-22	720-1	548 (600-1)	720-1 <sup>5</sup> / <sub>8</sub> 548 (600-1 <sup>5</sup> / <sub>8</sub> )	NA
CIRCLING	760-1	588 (600-1)	780-1 <sup>3</sup> / <sub>4</sub> 608 (700-1 <sup>3</sup> / <sub>4</sub> )	NA
DAAME FIX MINIMUMS (DUAL VOR RECEIVERS OR DME REQUIRED)				
S-22	640-1	468 (500-1)	640-1 <sup>1</sup> / <sub>4</sub> 468 (500-1 <sup>1</sup> / <sub>4</sub> )	NA
CIRCLING	760-1	588 (600-1)	780-1 <sup>3</sup> / <sub>4</sub> 608 (700-1 <sup>3</sup> / <sub>4</sub> )	NA



NE-1, 15 MAY 2025 to 12 JUN 2025

NE-1, 15 MAY 2025 to 12 JUN 2025

ELEV 172	TDZE 172
REIL Rwy 22	
MIRL Rwys 4-22 and 16-34	
FAF to MAP 5.9 NM	
Knots	60 90 120 150 180
Min:Sec	5:54 3:56 2:57 2:22 1:58