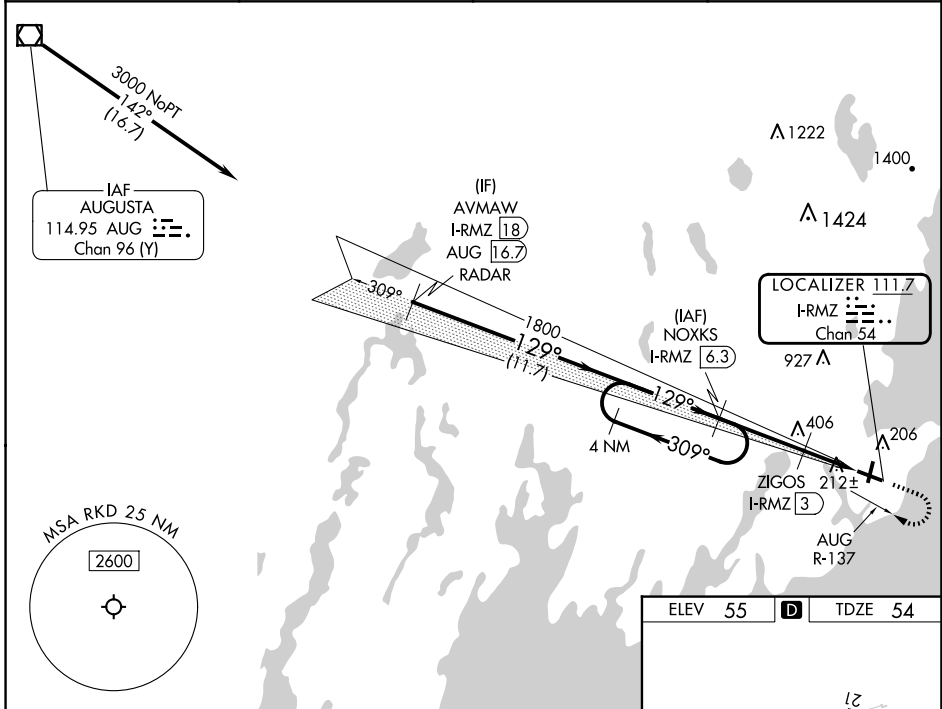


LOC/DME I-RMZ <b>111.7</b> Chan <b>54</b>	APP CRS <b>129°</b>	Rwy Idg <b>5012</b> TDZE <b>54</b> Apt Elev <b>55</b>
---	------------------------	---

# ILS or LOC RWY 13

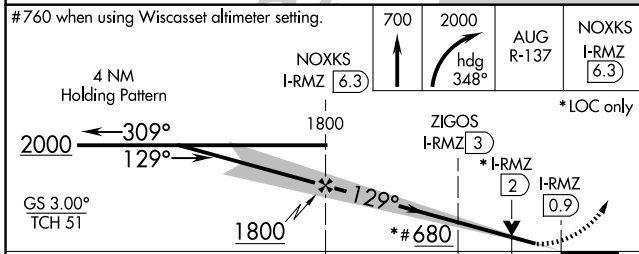
KNOX COUNTY RGNL (R.KD)

DME required.			MISSED APPROACH: Climb to 700 then climbing right turn to 2000 on heading 348° and on AUG R-137 to NOXKS/I-RMZ 6.3 DME and hold.
VDP NA when using Wiscasset altimeter setting. When local altimeter setting not received, use Wiscasset altimeter setting and increase all DA to 319 feet and all MDA 80 feet, increase S-LOC 13 Cats C/D visibility 3/8 SM and Circling Cat C 1/2 SM. For inop ALS when using Wiscasset altimeter setting increase S-ILS 13 all Cats visibility to 3/8 SM and S-LOC 13 Cats C/D to 1 3/8 SM.			
AWOS-3PT <b>119.025</b>	PORTLAND APP CON* <b>120.4 299.2</b>	CLNC DEL <b>123.8</b>	UNICOM <b>123.05 (CTAF)</b>

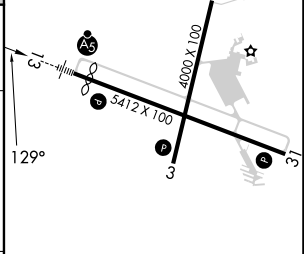


NE-1, 15 MAY 2025 to 12 JUN 2025

NE-1, 15 MAY 2025 to 12 JUN 2025



ELEV 55	D	TDZE 54
---------	---	---------



CATEGORY	A	B	C	D
S-ILS 13	254-1/2		200 (200-1/2)	
S-LOC 13	440-1/2	386 (400-1/2)	440-5/8	386 (400-5/8)
CIRCLING	580-1	525 (600-1)	720-1 3/4	1140-3
			665 (700-1 3/4)	1085 (1100-3)

REIL Rwy 3 and 31

MIRL Rwy 3-21

HIRL Rwy 13-31