

VOR/DME PVD 115.6 Chan 103	APP CRS 041°	Rwy Idg TDZE Apt Elev	8700 53 54
--	------------------------	-----------------------------	---------------------------------------

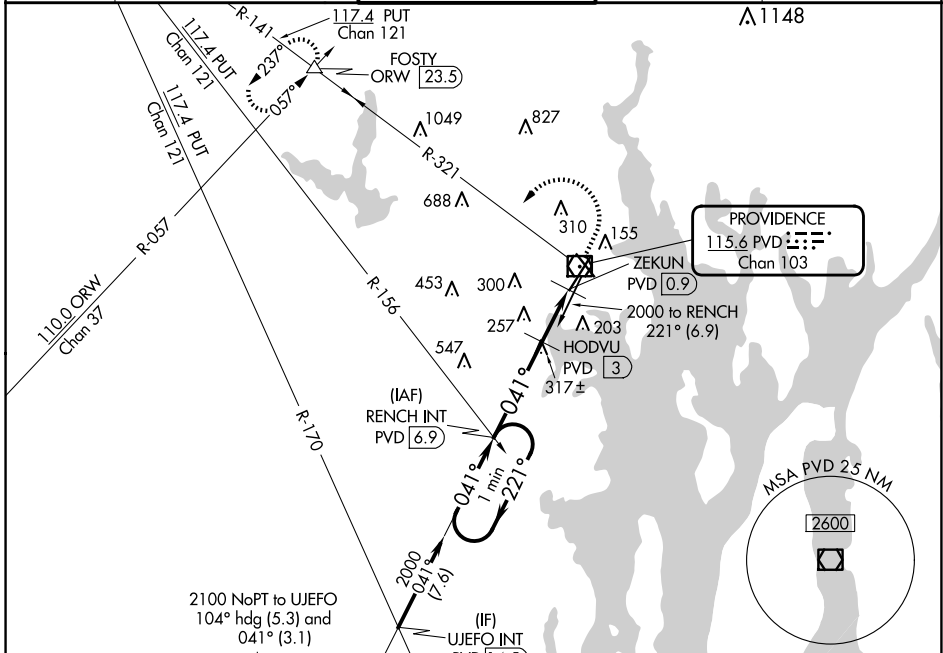
VOR RWY 5

RHODE ISLAND TF GREEN INTL (PVD)

⚠ For inop ALS, increase S-5 Cat C/D visibility to 2 SM. When control tower closed: increase S-5 Cats A and B visibility to 3/4 SM, and S-5 Cats C and D visibility to 1 3/4 SM. When control tower closed: HODVU fix minimums: increase S-5 Cats A and B visibility to 3/4 SM, and S-5 Cats C and D visibility to 1 1/4 SM.

ALSF-2 MISSED APPROACH: Climb to 800 then climbing left turn to 2500 on PVD VOR/DME R-321 to FOSTY INT/ORW 23.5 DME and hold.

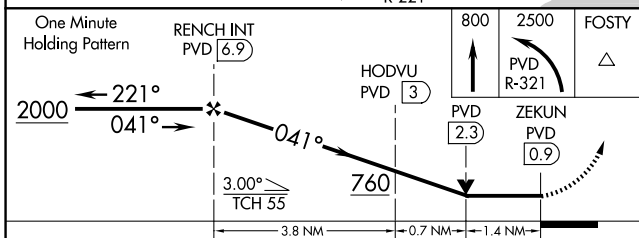
D-ATIS 124.2	PROVIDENCE APP CON ★ 123.675 244.875	PROVIDENCE TOWER ★ 120.7 (CTAF) 257.8	GND CON 121.9 348.6	CLNC DEL 126.65 348.6
------------------------	--	---	-------------------------------	---------------------------------



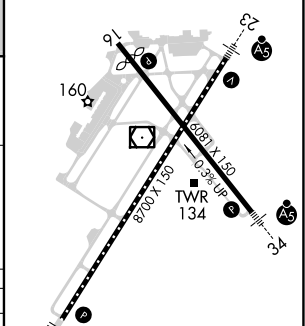
NE-1, 15 MAY 2025 to 12 JUN 2025

NE-1, 15 MAY 2025 to 12 JUN 2025

ELEV 54	D	TDZE 53
---------	---	---------



CATEGORY	A	B	C	D
S-5	760/24	707 (800-1/2)	760-1 5/8	707 (800-1 5/8)
C CIRCLING	760-1	706 (800-1)	760-2 706 (800-2)	860-2 1/2 806 (900-2 1/2)
HODVU FIX MINIMUMS				
S-5	560/24	507 (600-1/2)	560/55	507 (600-1)
C CIRCLING	560-1 506 (600-1)	640-1 586 (600-1)	640-1 1/2 586 (600-1 1/2)	860-2 1/2 806 (900-2 1/2)



TDZ/CL Rwy 5	1
REIL Rwy 16	1
HIRL Rwys 5-23 and 16-34	1
FAF to MAP 5.9 NM	
Knots	60 90 120 150 180
Min:Sec	5:54 3:56 2:57 2:22 1:58