

VOR/DME PVD <b>115.6</b> Chan <b>103</b>	APP CRS <b>165°</b>	Rwy Idg TDZE Apt Elev	<b>5516</b> <b>54</b> <b>54</b>
--	------------------------	-----------------------------	---------------------------------------

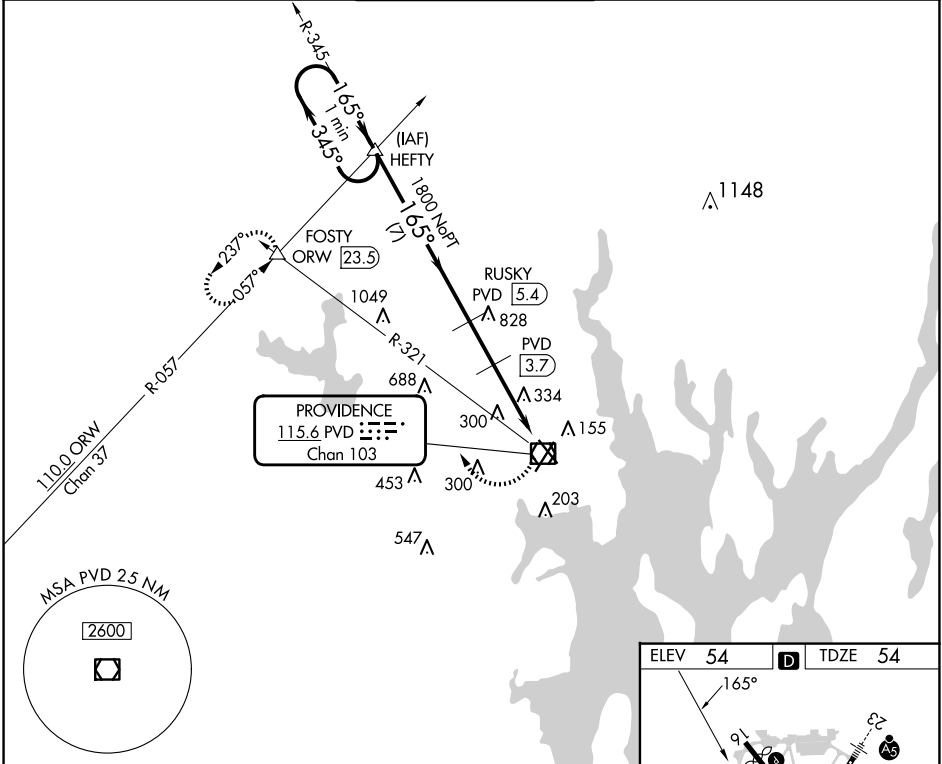
# VOR/DME RWY 16

RHODE ISLAND TF GREEN INTL (PVD)

**▼** Rwy 16 helicopter visibility reduction below 3/4 SM NA.  
**▲**

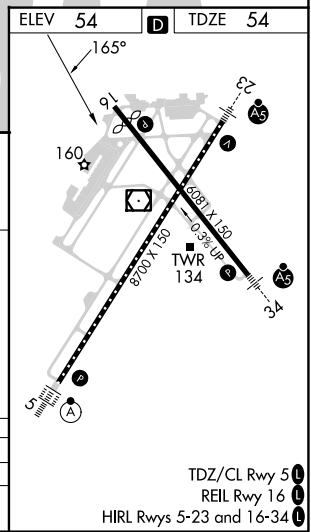
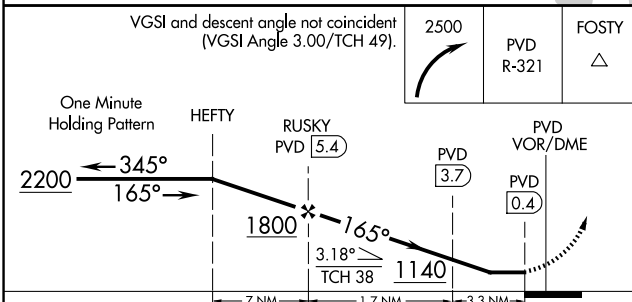
MISSED APPROACH: Climbing right turn to 2500 via PVD R-321 to FOSTY INT and hold.

D-ATIS <b>124.2</b>	PROVIDENCE APP CON * <b>123.675 244.875</b>	PROVIDENCE TOWER * <b>120.7 (CTAF) 257.8</b>	GND CON <b>121.9 348.6</b>	CLNC DEL <b>126.65 348.6</b>
------------------------	--	---	-------------------------------	---------------------------------



NE-1, 15 MAY 2025 to 12 JUN 2025

NE-1, 15 MAY 2025 to 12 JUN 2025



CATEGORY	A	B	C	D
S-16	600-1	546 (600-1)	600-1 5/8	546 (600-1 5/8)
<b>CIRCLING</b>	600-1 546 (600-1)	640-1 586 (600-1)	640-1 5/8 586 (600-1 5/8)	860-2 1/2 806 (900-2 1/2)

TDZ/CL Rwy 5 **1**  
REIL Rwy 16 **1**  
HIRL Rws 5-23 and 16-34 **1**