

LOC/DME I-OXC 109.55 Chan 32 (Y)	APP CRS 005°	Rwy ldg 5000 TDZE 721 Apt Elev 726
---	------------------------	---

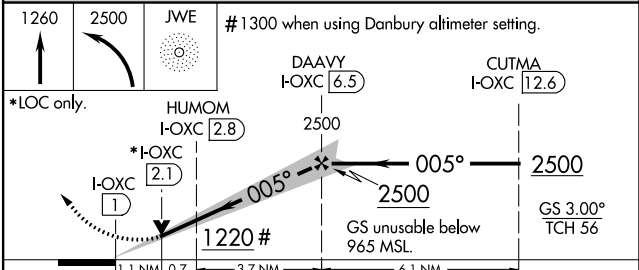
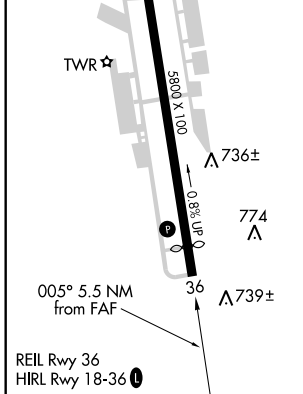
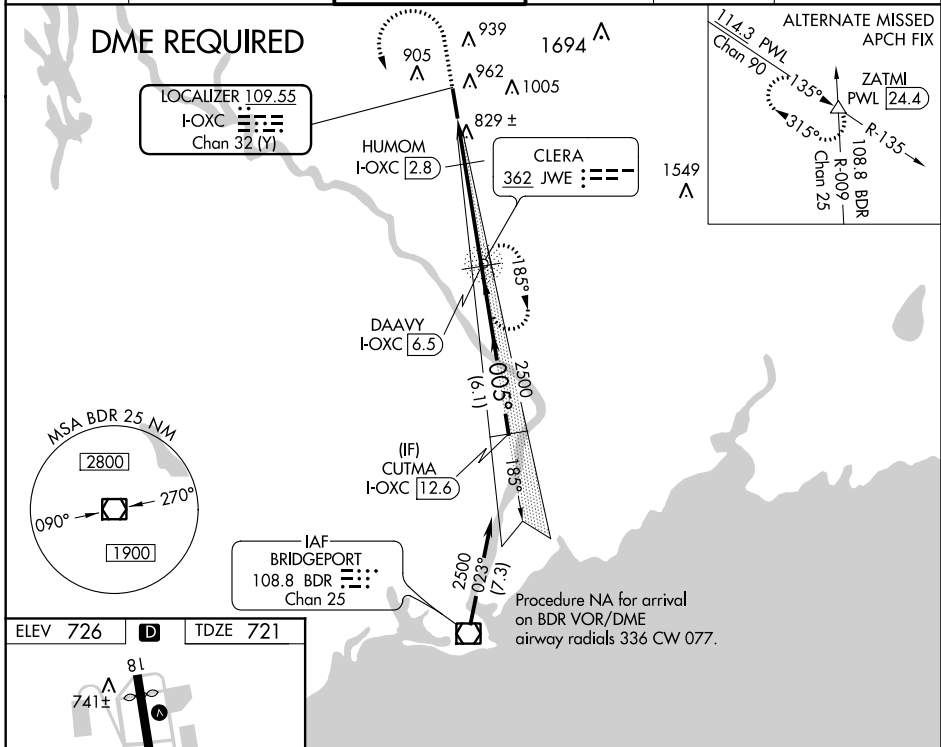
ILS or LOC RWY 36

WATERBURY-OXFORD (OXC)

NA Helicopter visibility reduction below 3/4 SM not authorized. ADF and DME required. VDP NA with Danbury altimeter setting. When local altimeter setting not received, use Danbury altimeter setting and increase all DA 77 feet and all MDA 80 feet; increase S-ILS 36 all Cats visibility 1/4 SM and increase S-LOC 36 and Circling visibility Cat C 1/2 SM and Cat D visibility 1/4 SM.

MISSED APPROACH: Climb to 1260 then climbing left turn to 2500 direct JWE NDB and hold.

ATIS 132.975	NEW YORK APP CON 124.075 343.65	OXFORD TOWER★ 118.475 (CTAF) U	GND CON 121.65	CLNC DEL 121.65	UNICOM 122.95
------------------------	---	---	--------------------------	---------------------------	-------------------------



CATEGORY	A	B	C	D
S-ILS 36	965-7/8 244 (300-7/8)			
S-LOC 36	1100-1	379 (400-1)	1100-1 1/8	379 (400-1 1/8)
C CIRCLING	1420-1	694 (700-1)	1460-2 734 (800-2)	1560-2 3/4 834 (900-2 3/4)