

LOC/DME I-RSR 110.9 Chan 46	APP CRS 109°	Rwy ldg TDZE Apt Elev	7001 980 1009
--	------------------------	-----------------------------	--

ILS or LOC RWY 11

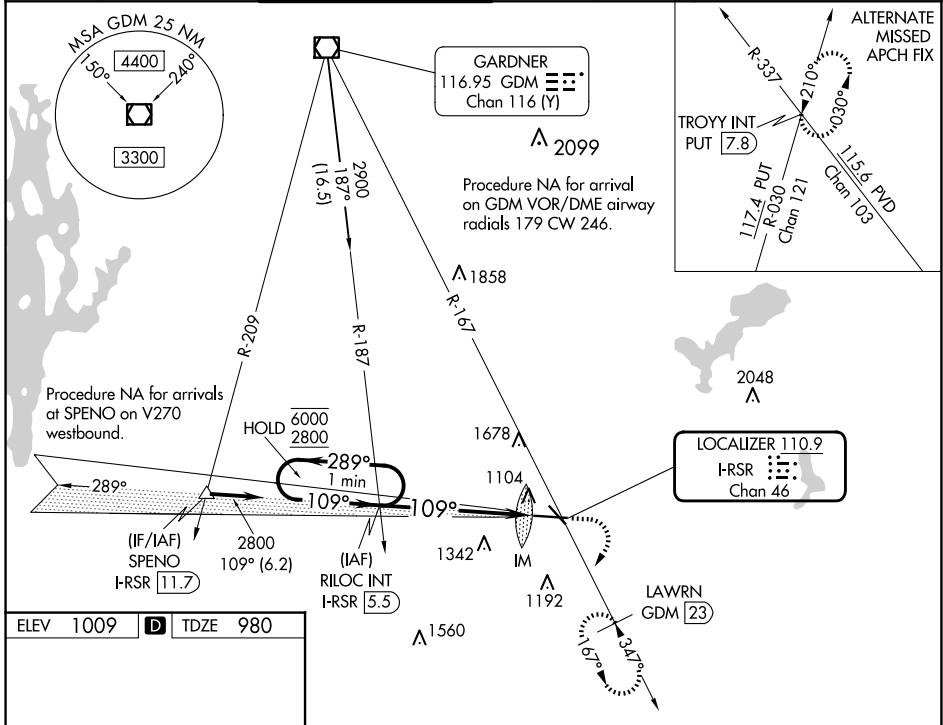
WORCESTER RGNL (ORH)

⚠ For inop ALS, increase S-LOC 11 Cats C and D visibility to 1 1/2 SM. When control tower closed: inop table does not apply to S-ILS 11 all Cats. When control tower closed: for inop ALS, increase S-LOC 11 Cat C and D visibility to 1 1/2 SM.

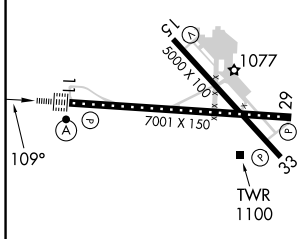
ALS F-2

MISSED APPROACH: Climb to 1800 then climbing right turn to 3100 on heading 230° and on GDM VOR/DME R-167 to LAWNRN/GDM 23 DME and hold, continue climb-in-hold to 3100.

ATIS 126.55	BRADLEY APP CON 119.0 327.1	WORCESTER TOWER ★ 120.5 (CTAF) 263.0	GND CON 123.85	CLNC DEL 128.65	CLNC DEL 119.0 (When twr closed)	UNICOM 122.95
-----------------------	---------------------------------------	--	--------------------------	---------------------------	---	-------------------------



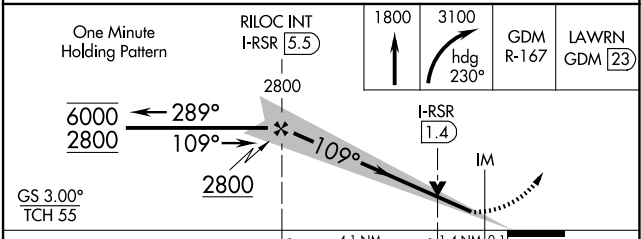
ELEV 1009	D	TDZE 980
-----------	----------	----------



TDZ/Cl Rwy 11
REIL Rwy 15, 29 and 33
HIRL Rwy 11-29
MIRL Rwy 15-33

FAF to MAP 5.5 NM

Knots	60	90	120	150	180
Min:Sec	5:30	3:40	2:45	2:12	1:50



CATEGORY	A	B	C	D
S-ILS 11		1180/18	200 (200-1/2)	
S-LOC 11	1500/24	520 (500-1/2)	1500/55	520 (500-1)
C CIRCLING	1560-1 551 (600-1)	1740-1 731 (800-1)	2000-3	991 (1000-3)

NE-1, 15 MAY 2025 to 12 JUN 2025

NE-1, 15 MAY 2025 to 12 JUN 2025