

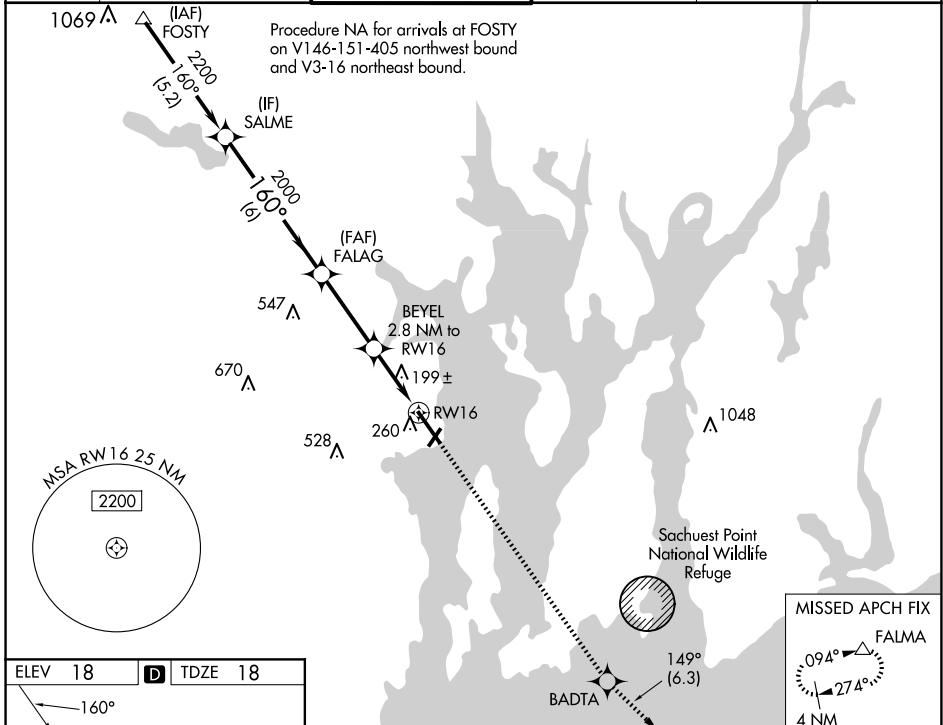
WAAS CH <b>93705</b> <b>W16A</b>	APP CRS <b>160°</b>	Rwy Idg <b>7100</b> TDZE <b>18</b> Apt Elev <b>18</b>
--	------------------------	---

# RNAV (GPS) RWY 16

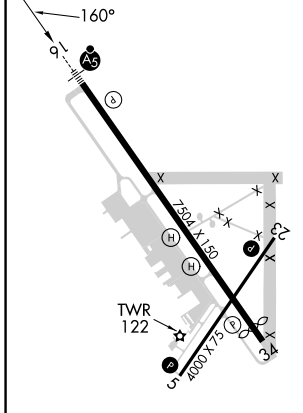
QUONSET STATE (OQU)

<p><b>⚠</b> For uncompensated Baro-VNAV systems, LNAV/VNAV NA below -15°C (5°F) or above 54°C (130°F). Circling Rwy 5 NA at night. DME/DME RNP-0.3 NA.</p>	<p>MALSR</p>	<p>MISSED APPROACH: Climb to 3000 direct BADTA and on track 149° to FALMA and hold.</p>
--	--------------	---

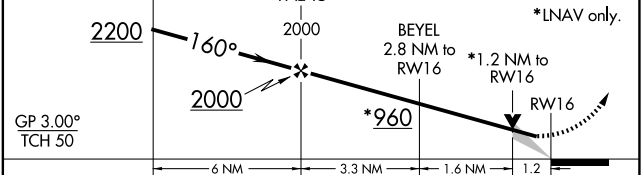
ATIS <b>118.6</b>	PROVIDENCE APP CON * <b>123.675 244.875</b>	QUONSET TOWER * <b>126.35 (CTAF) 0 252.9</b>	GND CON <b>134.5 226.675</b>	CLNC DEL <b>134.5</b>	UNICOM <b>122.95</b>
----------------------	--	---	---------------------------------	--------------------------	-------------------------



ELEV 18	<b>D</b>	TDZE 18
---------	----------	---------



VGSi and RNAV glidepath not coincident (VGSi Angle 3.00/TCH 58).			
SALME	FALAG	BADTA	FALMA
2200	2000	3000	tr 149°



CATEGORY	A	B	C	D
LPV DA		218-1/2	200 (200-1/2)	
LNAV/VNAV DA		442-3/4	424 (500-3/4)	
LNAV MDA		460-1/2	442 (500-1/2)	
<b>C</b> CIRCLING	620-1	602 (700-1)	620-1 3/4 602 (700-1 3/4)	880-2 3/4 862 (900-2 3/4)

NE-1, 15 MAY 2025 to 12 JUN 2025

NE-1, 15 MAY 2025 to 12 JUN 2025