

VOR/DME M ^{VY}	APP CRS	Rwy Idg	5504
114.5	050°	TDZE	58
Chan 92		Apt Elev	67

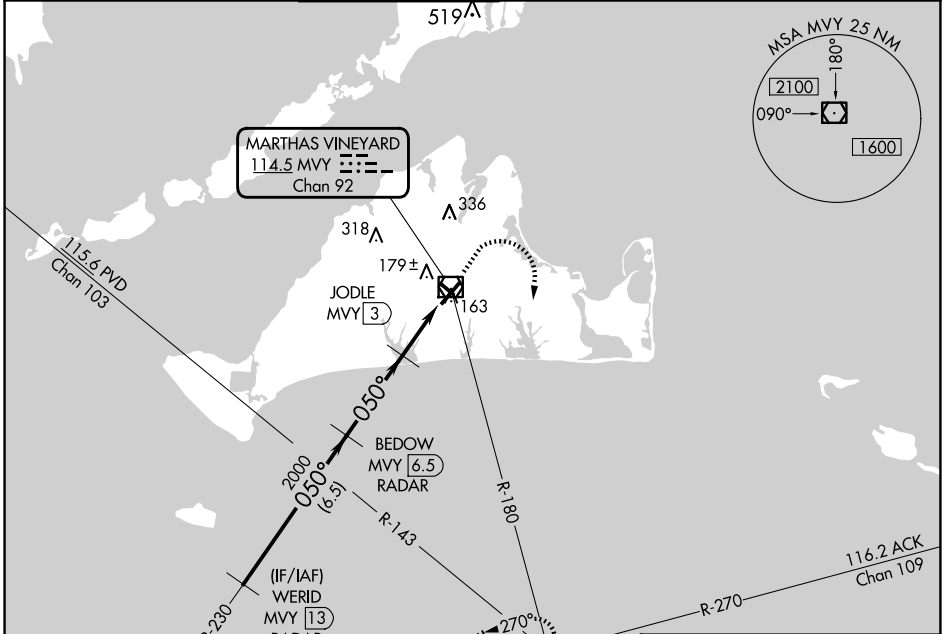
VOR RWY 6

MARTHA'S VINEYARD (M^{VY})

▼ DME required. Rwy 6 helicopter visibility reduction below 3/4 SM NA. VDP NA with Hyannis altimeter setting. When local altimeter setting not received, use Hyannis altimeter setting and increase all MDA 60 feet; increase S-6 Cats C and D visibility 1/4 mile. Night landing: Rwy 1.5 NA.

MISSED APPROACH: Climb to 500 then climbing right turn to 2500 via M^{VY} VOR/DME R-180 to CLAMY INT/ACK 23.9 DME and hold.

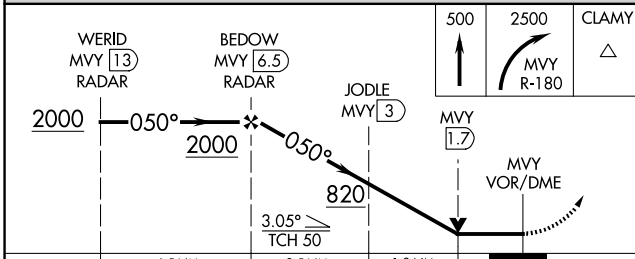
ATIS 126.25	BOSTON APP CON 133.75	VINEYARD TOWER * 121.4 (CTAF) 0	GND CON 124.35	CLNC DEL 124.35	CLNC DEL 119.7 (When twr closed)	UNICOM 122.95
----------------	--------------------------	------------------------------------	-------------------	--------------------	--	------------------



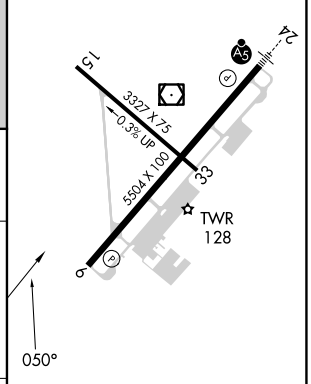
NE-1, 15 MAY 2025 to 12 JUN 2025

NE-1, 15 MAY 2025 to 12 JUN 2025

RADAR REQUIRED



ELEV 67	D	TDZE 58
---------	---	---------



CATEGORY	A	B	C	D
S-6	440-1	382 (400-1)	440-1 1/8	382 (400-1 1/8)
CIRCLING	500-1 433 (500-1)	540-1 473 (500-1)	700-1 3/4 633 (700-1 3/4)	780-2 1/4 713 (800-2 1/4)

- HIRL Rwy 6-24 0
- MIRL Rwy 15-33 0
- REIL Rwy 6
- REIL Rwy 33 0