

WAAS CH <b>56629</b> <b>W33A</b>	APP CRS <b>326°</b>	Rwy Idg TDZE Apf Elev	<b>3327</b> <b>66</b> <b>67</b>
--	------------------------	-----------------------------	---------------------------------------

# RNAV (GPS) RWY 33

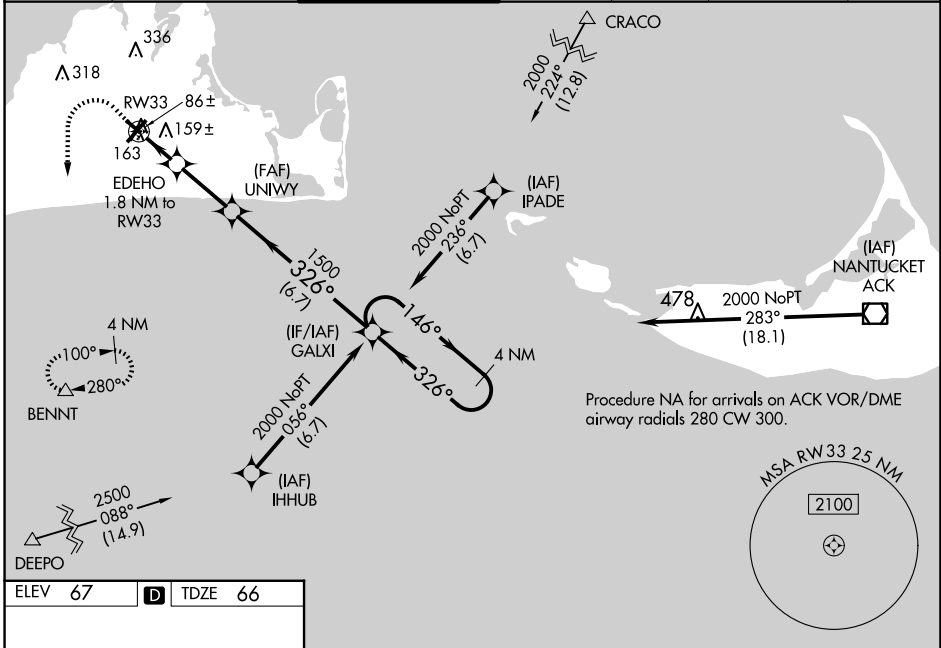
MARTHA'S VINEYARD (MVY)

RNP APCH.

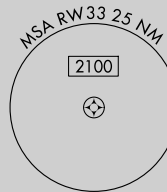
**⚠** Baro-VNAV NA when using Hyannis altimeter setting. For uncompensated Baro-VNAV systems, LNAV/VNAV NA below -15°C or above 43°C. Rwy 33 helicopter visibility reduction below 3/4 SM NA. When local altimeter setting not received, use Hyannis altimeter setting and increase LPV DA to 370 feet, LNAV/VNAV DA to 393 feet, and all visibility 1/2 SM, increase all MDA 60 feet and Cat C and D visibilities 1/4 SM. Circling Rwy 15 NA at night. VDP NA with Hyannis altimeter setting.

**MISSED APPROACH:**  
Climb to 1400 then climbing left turn to 2000 direct BENNT and hold.

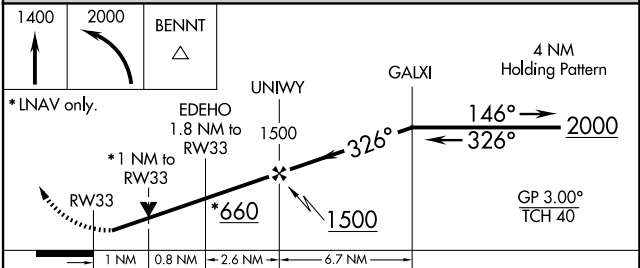
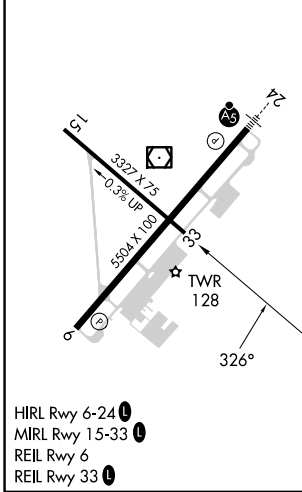
ATIS <b>126.25</b>	BOSTON APP CON <b>133.75</b>	VINEYARD TOWER * <b>121.4</b> (CTAF) <b>0</b>	GND CON <b>124.35</b>	CLNC DEL <b>124.35</b>	CLNC DEL <b>119.7</b> (When twr closed)	UNICOM <b>122.95</b>
-----------------------	---------------------------------	--	--------------------------	---------------------------	---	-------------------------



Procedure NA for arrivals on ACK VOR/DME airway radials 280 CW 300.



ELEV 67	<b>D</b>	TDZE 66
---------	----------	---------



CATEGORY	A	B	C	D
LPV DA		316-1	250 (300-1)	
LNAV/ VNAV DA		339-1	273 (300-1)	
LNAV MDA		420-1	354 (400-1)	
<b>C</b> CIRCLING	500-1 433 (500-1)	540-1 473 (500-1)	700-1 3/4 633 (700-1 3/4)	780-2 1/4 713 (800-2 1/4)

NE-1, 15 MAY 2025 to 12 JUN 2025

NE-1, 15 MAY 2025 to 12 JUN 2025