


WAAS CH <b>48804</b> <b>W24A</b>	APP CRS <b>236°</b>	Rwy Idg TDZE Apt Elev	<b>5504</b> <b>63</b> <b>67</b>
--	------------------------	-----------------------------	---------------------------------------

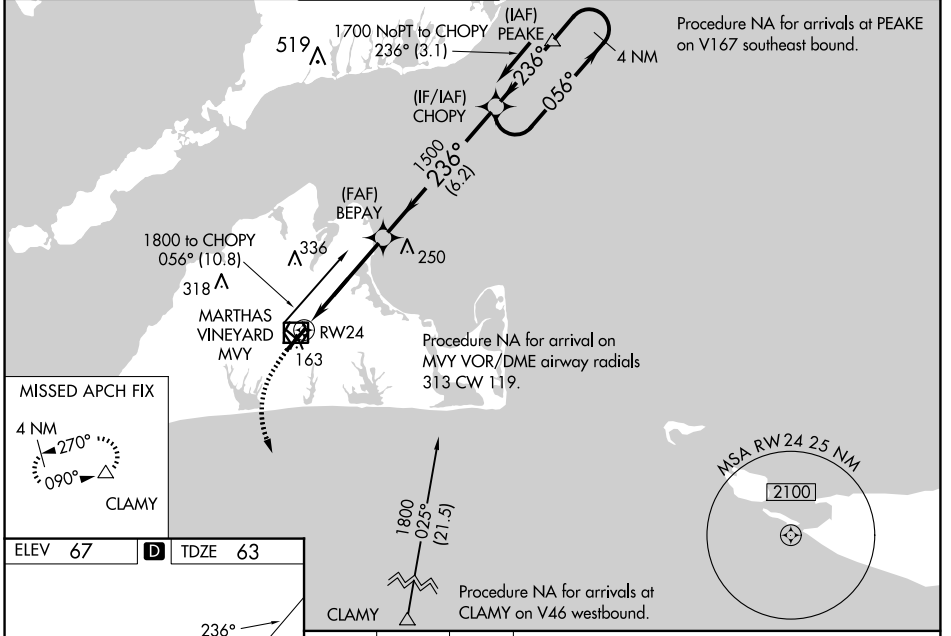
# RNAV (GPS) RWY 24

MARTHA'S VINEYARD (MVY)

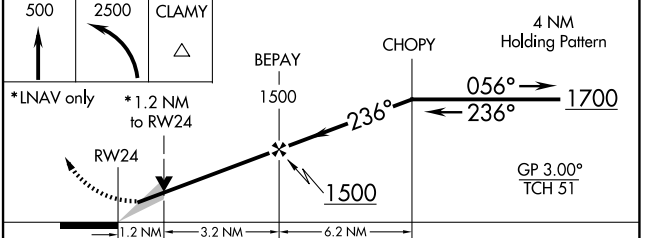
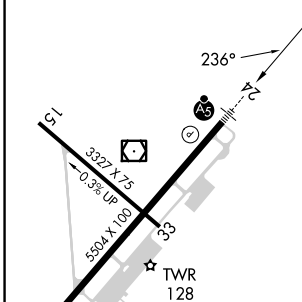
**⚠** For uncompensated Baro-VNAV systems, LNAV/VNAV NA below -14°C (7°F) or above 54°C (130°F), DME/DME RNP-0.3 NA. When local altimeter setting not received, use Hyannis altimeter setting and increase all DA 54 feet and all MDA 60 feet; increase LNAV/VNAV all Cats visibility to RVR 5200; increase LNAV Cats C/D visibility to RVR 5000; increase Circling visibility to 2 miles and D to 2 1/2 mile. For inop MALSR, increase LNAV/VNAV all Cats visibility to 1 1/2 mile. For inop MALSR using Hyannis altimeter setting, increase LPV all Cats visibility to RVR 4000, LNAV/VNAV all Cats visibility to 1 1/2 mile and increase LNAV Cats C/D visibility to 1 1/2 mile. VDP and Baro-VNAV NA when using Hyannis altimeter setting. Night landing: Rwy 15 NA. \*\* RVR 1800 authorized with use of FD or AP or HUD to DA, NA when using Hyannis altimeter setting.

**MALSR**  
  
**MISSED APPROACH:**  
 Climb to 500 then climbing left turn to 2500 direct CLAMY and hold.

ATIS <b>126.25</b>	BOSTON APP CON <b>133.75</b>	<b>VINEYARD TOWER *</b> <b>121.4 (CTAF) 0</b>	GND CON <b>124.35</b>	CLNC DEL <b>124.35</b>	CLNC DEL <b>119.7</b> (When twr closed)	UNICOM <b>122.95</b>
-----------------------	---------------------------------	--	--------------------------	---------------------------	---	-------------------------



ELEV 67	<b>D</b>	TDZE 63
---------	----------	---------



CATEGORY	A	B	C	D
LPV DA	**263/24 200 (200-1/2)			
LNAV/ VNAV DA	480/47 417 (500-1)			
LNAV MDA	500/24	437 (500-1/2)	500/40	437 (500-3/4)
<b>C</b> CIRCLING	500-1 433 (500-1)	540-1 473 (500-1)	700-1 3/4 633 (700-1 3/4)	780-2 1/4 713 (800-2 1/4)

NE-1, 15 MAY 2025 to 12 JUN 2025

NE-1, 15 MAY 2025 to 12 JUN 2025