

WAAS CH 93829 W15A	APP CRS 146°	Rwy Idg TDZE Apt Elev	3327 67 67
---------------------------------	------------------------	-----------------------------	---------------------------------------

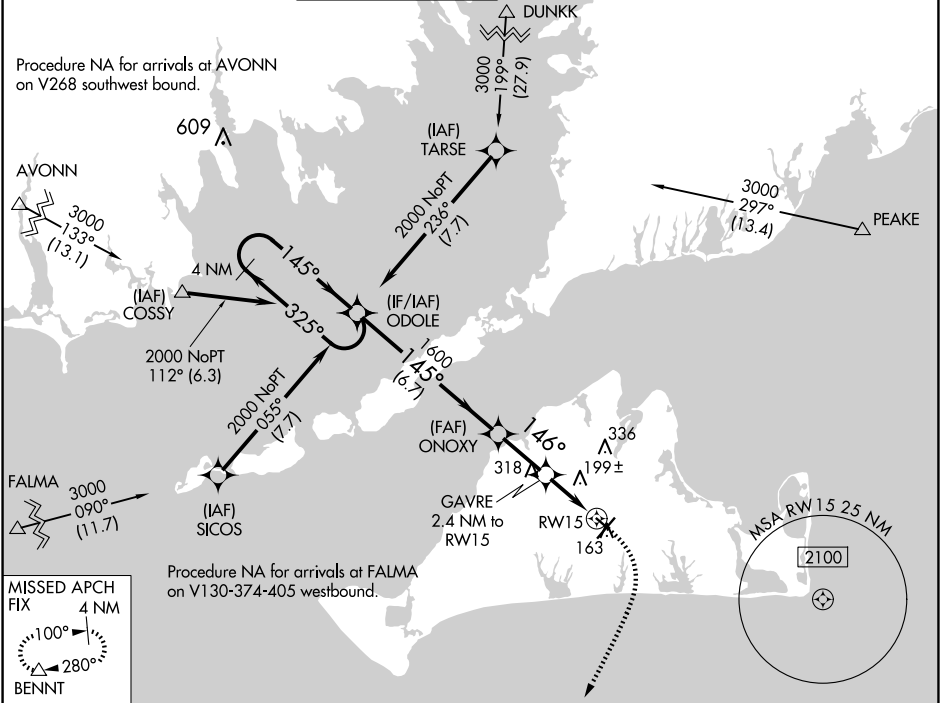
RNAV (GPS) RWY 15

MARTHA'S VINEYARD (MVY)

⚠ Baro-VNAV NA when using Hyannis altimeter setting. For uncompensated Baro-VNAV systems, LNAV/VNAV NA below -15°C (5°F) or above 54°C (130°F). When local altimeter setting not received, use Hyannis altimeter setting and increase all DA 54 feet and all MDA 60 feet; increase LNAV Cat C and D visibility and Circling Cat C and D visibility ¼ mile. DME/DME RNP-0.3 NA. Helicopter visibility reduction below 1 SM NA. Night landing: Rwy 15 NA.

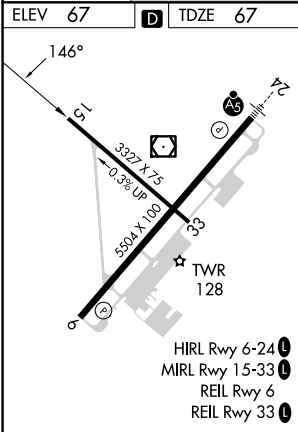
MISSED APPROACH:
Climb to 600 then climbing right turn to 2000 direct BENNT and hold.

ATIS 126.25	BOSTON APP CON 133.75	VINEYARD TOWER * 121.4 (CTAF) 0	GND CON 124.35	CLNC DEL 124.35	CLNC DEL 119.7 (When twr closed)	UNICOM 122.95
-----------------------	---------------------------------	--	--------------------------	---------------------------	---	-------------------------



NE-1, 15 MAY 2025 to 12 JUN 2025

NE-1, 15 MAY 2025 to 12 JUN 2025



4 NM Holding Pattern	ODOLE	ONOXY	GAVRE 2.4 NM to RWY 15	RWY 15
2000	1600	880*	800	
6.7 NM	2.3 NM	2.4 NM		
GP 3.00° TCH 53				
CATEGORY	A	B	C	D
LPV DA		317-1	250 (300-1)	
LNAV/VNAV DA		317-1	250 (300-1)	
LNAV MDA	460-1	393 (400-1)	460-1½	393 (400-1½)
C CIRCLING	500-1 433 (500-1)	540-1 473 (500-1)	700-1¾ 633 (700-1¾)	780-2¼ 713 (800-2¼)