

WAAS CH 97531 W19B	APP CRS 194°	Rwy Idg TDZE Apt Elev	3950 733 733
--	------------------------	-----------------------------	---

RNAV (GPS) Z RWY 19

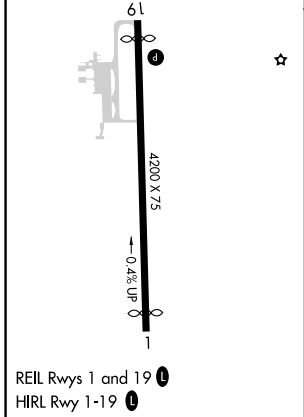
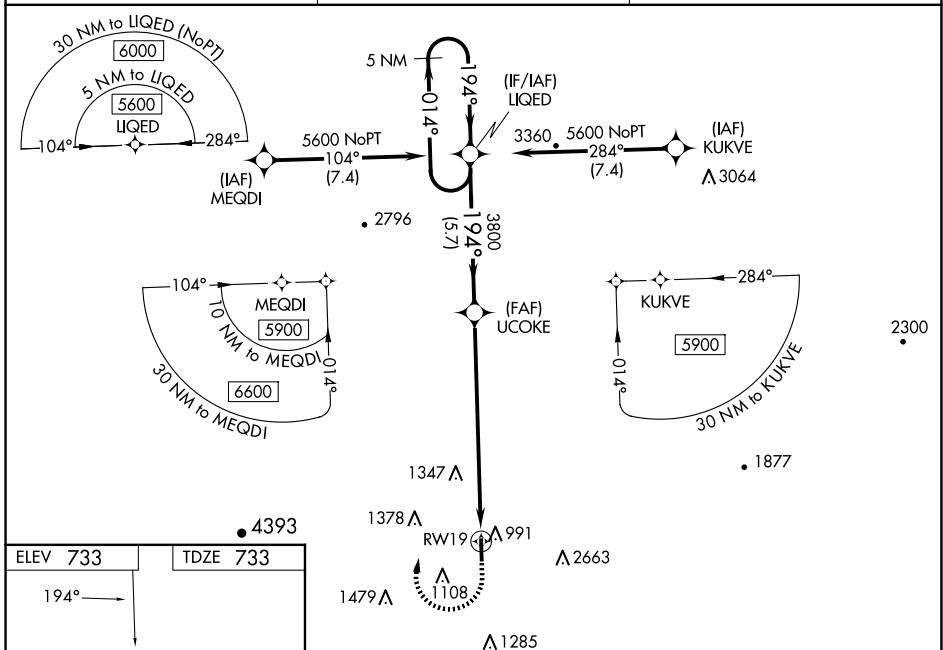
MORRISVILLE-STOWE STATE (MVL)

RNP APCH - GPS.

⚠ Circling NA for Cat C E of Rwy 1-19. VDP NA when using Burlington altimeter setting. Rwy 19 helicopter visibility reduction below 3/4 SM NA. When local altimeter setting not received, use Burlington altimeter setting: increase LPV DA to 1380 feet and all visibilities 3/4 SM. Increase LNAV/VNAV DA to 1690 feet and all visibilities 1/2 SM. Increase all MDAs 120 feet. Baro-VNAV NA.

⚠ MISSED APPROACH: (Do not exceed 165K until LIQED) Climb to 2200 then climbing right turn to 5600 direct LIQED and hold, continue climb-in-hold to 5600. Missed approach requires minimum climb of 325 feet per NM to 3000; if unable to meet climb gradient, see RNAV (GPS) Y Rwy 19.

ASOS 135.625	BOSTON CENTER 135.7 282.2	UNICOM 122.8 (CTAF) 0
------------------------	-------------------------------------	---------------------------------



2200	5600	LIQED	5 NM Holding Pattern
*LNAV only	*2.7 NM to RWY19	UCOKE 3800	LIQED
RWY19	2.7 NM	5.5 NM	5.7 NM
2200	5600	LIQED	5600
194°	194°	014°	194°
GP 3.50°	TCH 31		
REIL Rwy 1 and 19	HIRL Rwy 1-19		

CATEGORY	A	B	C	D
LPV DA	1270-1½	537 (600-1½)		NA
LNAV/VNAV DA	1580-2½	847 (900-2½)		NA
LNAV MDA	1760-1¼ 1027 (1100-1¼)	1760-1½ 1027 (1100-1½)	1760-3 1027 (1100-3)	NA
C CIRCLING	1760-1¼ 1027 (1100-1¼)	1780-1½ 1047 (1100-1½)	1980-3 1247 (1300-3)	NA

NE-1, 15 MAY 2025 to 12 JUN 2025

NE-1, 15 MAY 2025 to 12 JUN 2025