

LOC/DME I-LCI <b>108.5</b> Chan <b>22</b>	APP CRS <b>084°</b>	Rwy Idg <b>5646</b> TDZE <b>545</b> Apt Elev <b>545</b>
---	------------------------	---

# ILS or LOC RWY 8

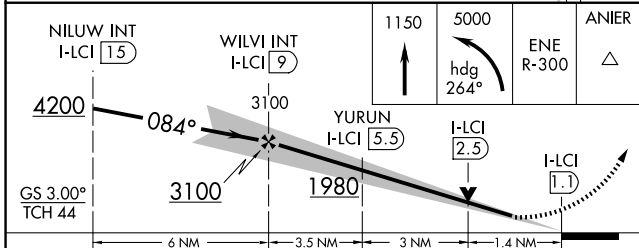
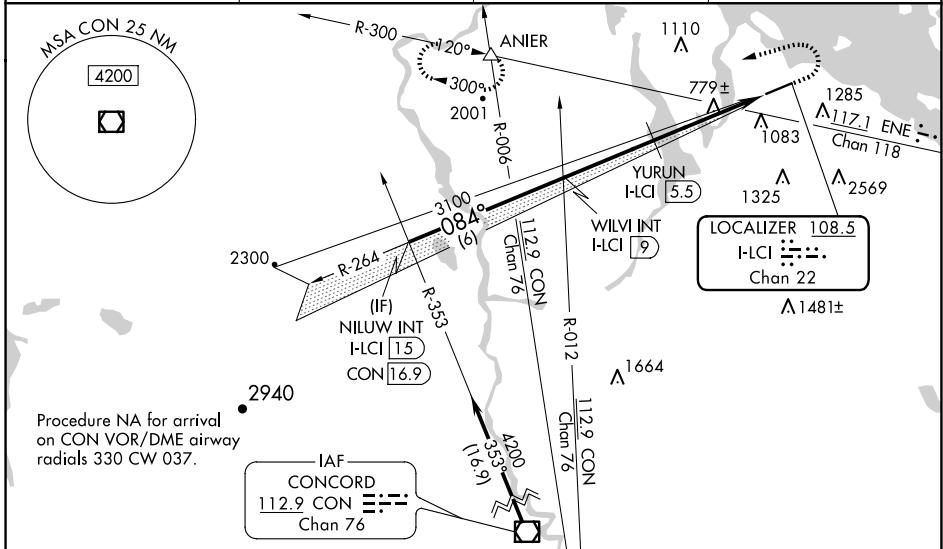
LACONIA MUNI (LCI)

**⚠** Circling NA south of Rwy 8-26. Circling Rwy 26 NA at night. For inop ALS, increase S-ILS 8 visibility all Cats 1/8 SM, YURUN fix minimums increase S-LOC 8 Cats C and D visibility 1/4 SM. When local altimeter setting not received, use Concord altimeter setting and increase S-ILS \* DA to 876 feet; increase S-ILS 8 DA to 983 feet and all visibilities 1/8 SM and increase all MDAs 100 feet, increase S-LOC 8 visibility Cat A 1/2 SM. Increase YURUN fix minimums visibility Cats C/D 1/4 SM and Circling visibility Cat C 1/4 SM. Inop table does not apply to S-LOC 8 Cats C and D.

**MALSR**  
AS

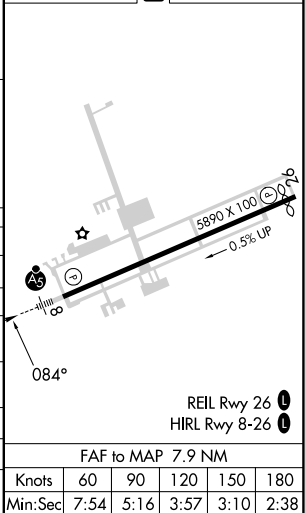
**MISSED APPROACH:** Climb to 1150 then climbing left turn to 5000 on heading 264° and ENE VOR/DME R-300 to ANIER INT and hold, continue climb-in-hold to 5000.  
\*Missed approach requires minimum climb of 295 feet per NM to 1500.

AWOS-3PT <b>133.525</b>	BOSTON APP CON <b>134.75 254.25</b>	CLNC DEL <b>119.85</b>	UNICOM <b>123.0 (CTAF) 0</b>
----------------------------	--	---------------------------	---------------------------------



ELEV 545	<b>D</b>	TDZE 545
----------	----------	----------

CATEGORY	A	B	C	D
S-ILS 8*	795-1/2		250 (300-1/2)	
S-ILS 8	902-5/8		357 (400-5/8)	
S-LOC 8	1980-3/4 1435 (1500-3/4)	1980-1 1435 (1500-1)	1980-3	1435 (1500-3)
<b>C</b> CIRCLING	1980-1 1/4 1435 (1500-1 1/4)	1980-1 1/2 1435 (1500-1 1/2)	1980-3	1435 (1500-3)
YURUN FIX MINIMUMS				
S-LOC 8	1040-1/2	495 (500-1/2)	1040-1	495 (500-1)
<b>C</b> CIRCLING	1160-1	615 (700-1)	1160-1 3/4 615 (700-1 3/4)	1460-3 915 (1000-3)



NE-1, 15 MAY 2025 to 12 JUN 2025

NE-1, 15 MAY 2025 to 12 JUN 2025

FAF to MAP 7.9 NM					
Knots	60	90	120	150	180
Min:Sec	7:54	5:16	3:57	3:10	2:38