

WAAS CH <b>62924</b> <b>W05A</b>	APP CRS <b>049°</b>	Rwy Idg TDZE <b>483</b> Apt Elev <b>489</b>	<b>5015</b> <b>483</b> <b>489</b>
--	------------------------	---	---

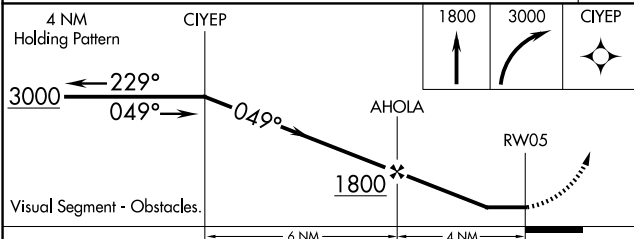
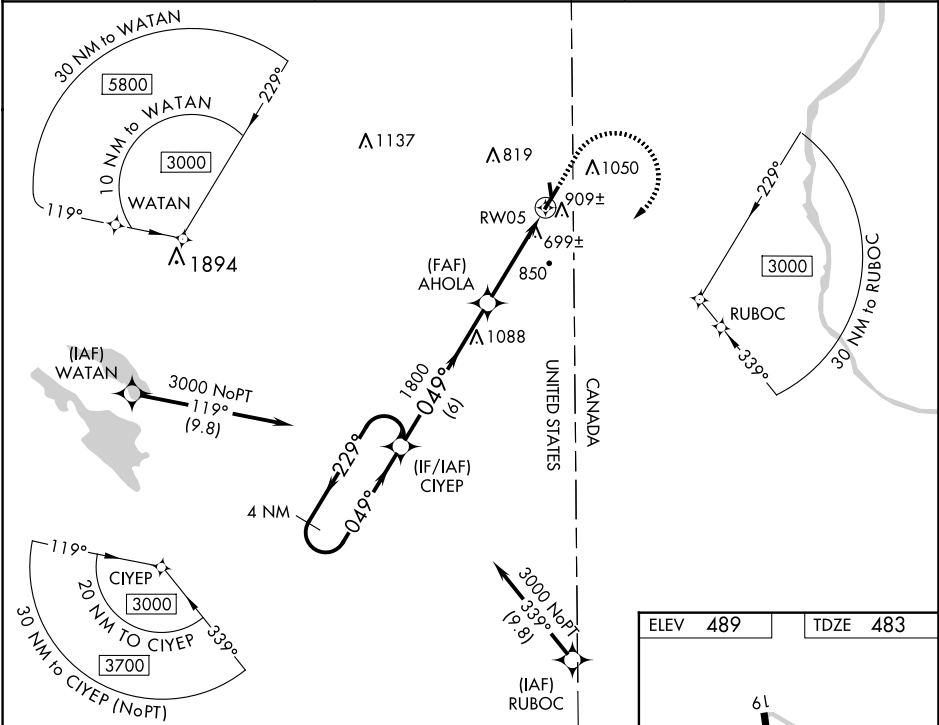
# RNAV (GPS) RWY 5

HOULTON INTL (HUL)

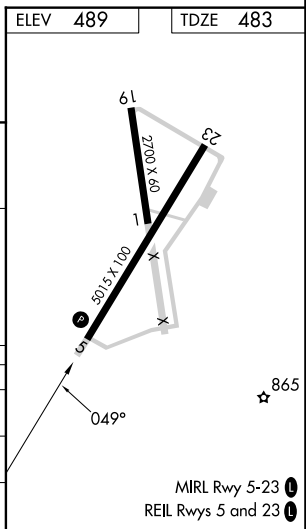
**⚠** When local altimeter setting not received, use Presque Isle altimeter setting increase all MDA 100 feet; increase LP Cat C, LNAV Cat B and Circling Cat B visibility ¼ mile; increase LNAV Cat C visibility ⅓ mile; increase Circling Cat C visibility ⅔ mile. Circling NA southeast of Rwy 5-23. DME/DME RNP-0.3 NA. Helicopter visibility reduction below ¾ SM NA.

**MISSED APPROACH:** Climb to 1800 then climbing right turn to 3000 direct CIYEP and hold.

ASOS <b>132.025</b>	BOSTON CENTER <b>120.25 346.4</b>	UNICOM <b>122.8 (CTAF)</b>
------------------------	--------------------------------------	-------------------------------



CATEGORY	A	B	C	D
LP MDA	960-1	477 (500-1)	960-1 ⅓ 477 (500-1 ⅓)	NA
LNAV MDA	1140-1	657 (700-1)	1140-1 ⅞ 657 (700-1 ⅞)	NA
CIRCLING	1140-1	651 (700-1)	1140-1 ⅞ 651 (700-1 ⅞)	NA



NE-1, 15 MAY 2025 to 12 JUN 2025

NE-1, 15 MAY 2025 to 12 JUN 2025