

WAAS CH 42536 W32A	APP CRS 323°	Rwy Idg TDZE 116 Apt Elev 130	9501
--	------------------------	---	-------------

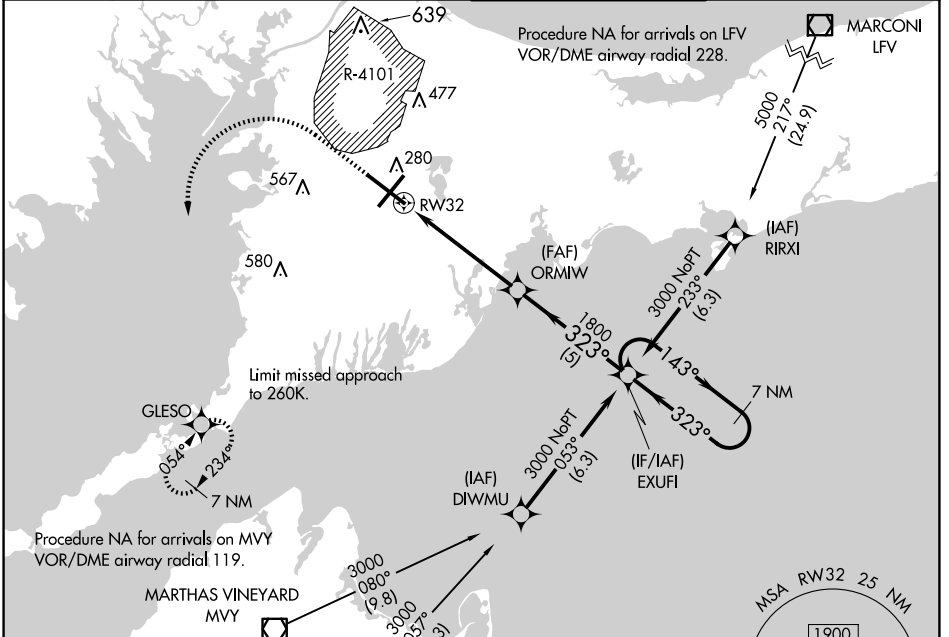
RNAV (GPS) RWY 32

CAPE COD COAST GUARD AIR STATION (F'MH)

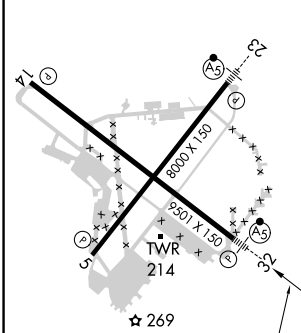
⚠ For uncompensated Baro-VNAV systems, LNAV/VNAV NA below -1 5°C (5°F) or above 54°C (130°F). DME/DME RNP-0.3 NA. Circling NA NE of Rwy 14 and NW of Rwy 23.

MALS MISSED APPROACH: Climb to 600 then climbing left turn to 3000 direct GLESO and hold, continue climb-in-hold to 3000.

ATIS 120.475 236.825	BOSTON APP CON 118.2 284.6	COAST GUARD TOWER 128.425 291.1	GND CON 124.15 275.8
--------------------------------	--------------------------------------	---	--------------------------------



ELEV 130	TDZE 116
----------	----------

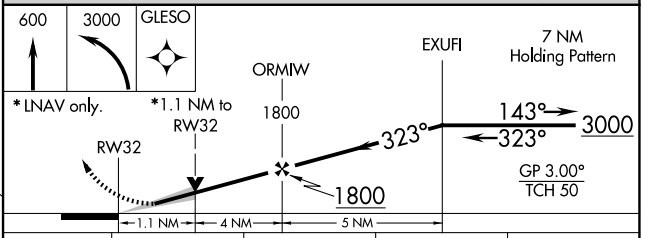


Procedure NA for arrivals at DEEPO on V46 westbound.

Procedure NA for arrivals on LFV VOR/DME airway radial 228.

Procedure NA for arrivals on MVY VOR/DME airway radial 119.

Limit missed approach to 260K.



CATEGORY	A	B	C	D
LPV DA		316/24	200 (200-1/2)	
LNAV/VNAV DA		429/26	313 (300-1/2)	
LNAV MDA	520/24	404 (400-1/2)	520/40	404 (400-3/4)
CIRCLING	580-1 450 (500-1)	640-1 510 (600-1)	900-2 1/4 770 (800-2 1/4)	900-2 1/2 770 (800-2 1/2)

NE-1, 15 MAY 2025 to 12 JUN 2025

NE-1, 15 MAY 2025 to 12 JUN 2025