


LOC/DME I-EWB 109.7 Chan 34	APP CRS 234°	Rwy Idg TDZE 78 Apt Elev 79	5000
---	------------------------	---	-------------

LOC BC RWY 23

NEW BEDFORD RGNL (E-WB)

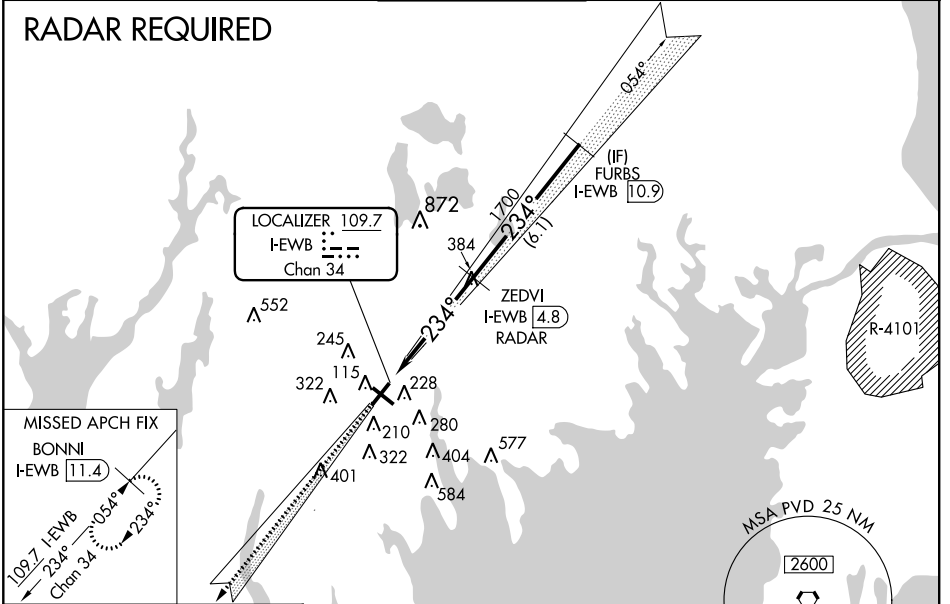
▼ When local altimeter setting not received, use Taunton altimeter setting and increase all MDA 40 feet and increase S-23 Cat C/D visibility 1/8 mile and Circling Cat D visibility 1/4 mile. VDP NA with Taunton altimeter setting. Helicopter visibility reduction below 3/4 SM NA. For inop MALSRS increase S-23 Cat A/B visibility 1/4 mile and Cat C/D visibility 3/8 mile. For inop MALSRS, when using Taunton altimeter setting, increase S-23 Cat A/B visibility 1/4 mile.

MALSRS 

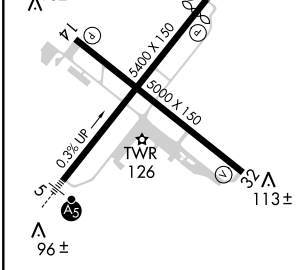
MISSED APPROACH:
Climb to 2100 on I-EWB SW course to BONNI/I-EWB 11.4 DME and hold.

ATIS 126.85	PROVIDENCE APP CON* 128.7 269.525	NEW BEDFORD TOWER* 118.1 (CTAF) 0 239.0	GND CON 121.9	UNICOM 122.95
-----------------------	---	---	-------------------------	-------------------------

RADAR REQUIRED



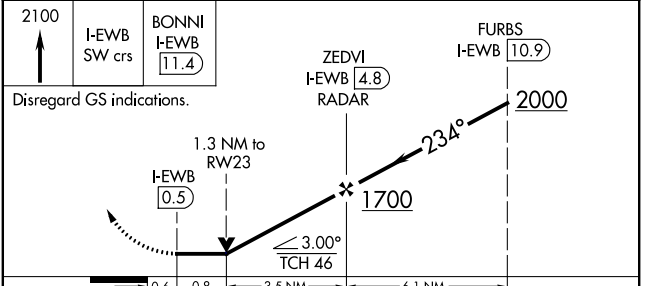
ELEV 79	TDZE 78
234° 4.9 NM from FAF	
130 ±	
132 ±	113 ±




FAF to MAP 4.3 NM					
Knots	60	90	120	150	180
Min:Sec	4:18	2:52	2:09	1:43	1:26

NEW BEDFORD, MASSACHUSETTS
Amdt 13 11DEC14

BACK COURSE



CATEGORY	A	B	C	D
S-23	580-3/4 502 (600-3/4)		580-1 502 (600-1)	
 CIRCLING	600-1 521 (600-1)	640-1 561 (600-1)	720-1 3/4 641 (700-1 3/4)	940-2 3/4 861 (900-2 3/4)

NEW BEDFORD RGNL (E-WB) LOC BC RWY 23