

(MAD.DPK3) 23334

AL-460 (FAA)

DEER PARK THREE ARRIVAL

WINDSOR LOCKS, CONNECTICUT

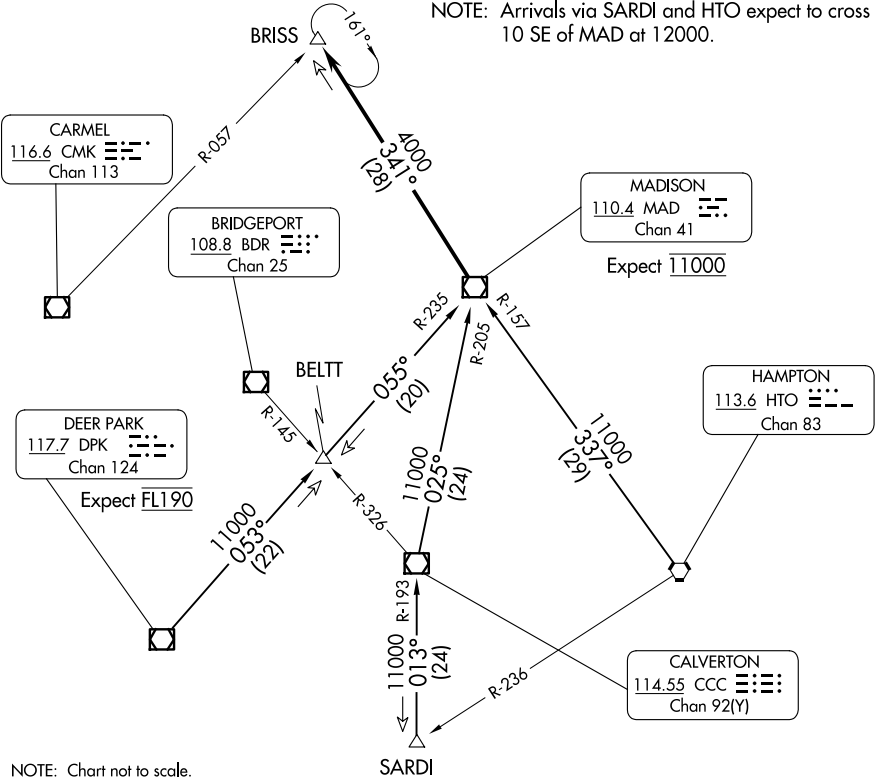
BRADLEY APP CON
 123.95 290.55 (061-240)
 125.35 281.5 (241-060)
 BDL D-ATIS
 118.15

WESTFIELD-BARNES
 RGNL

WESTOVER ARB/
 METROPOLITAN

BRADLEY
 INTL

NOTE: Applicable to arrivals 11000 and above.
 NOTE: RADAR required.
 NOTE: Arrivals via SARDI and HTO expect to cross
 10 SE of MAD at 12000.



NE-1, 15 MAY 2025 to 12 JUN 2025

NE-1, 15 MAY 2025 to 12 JUN 2025

NOTE: Chart not to scale.

ARRIVAL ROUTE DESCRIPTION

DEER PARK TRANSITION (DPK.DPK3): From over DPK VOR/DME on DPK R-053 to BELTT INT, then on MAD R-235 to MAD VOR/DME. Thence . . .

HAMPTON TRANSITION (HTO.DPK3): From over HTO VORTAC on HTO R-337 and MAD R-157 to MAD VOR/DME. Thence . . .

SARDI TRANSITION (SARDI.DPK3): From over SARDI INT on CCC R-193 to CCC VOR/DME, then on CCC R-025 and MAD R-205 to MAD VOR/DME. Thence . . .

From over MAD VOR/DME on MAD R-341 to BRISS INT/MAD 28 DME.
 Expect radar vectors to final approach course prior to BRISS INT.

DEER PARK THREE ARRIVAL

WINDSOR LOCKS, CONNECTICUT

(MAD.DPK3) 25OCT07