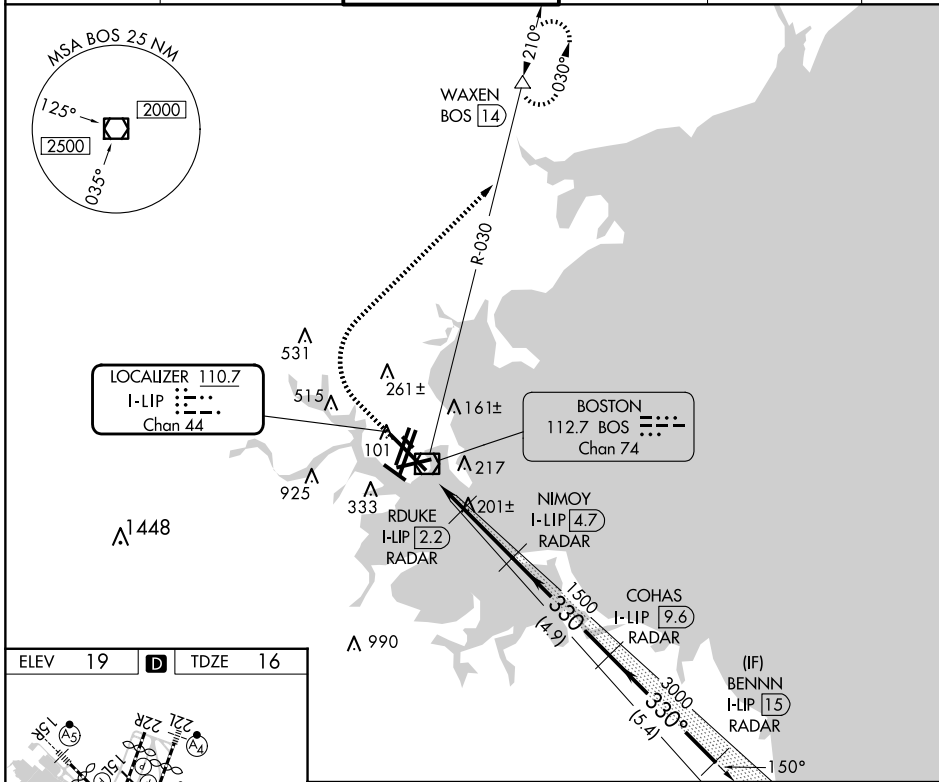


LOC/DME I-LIP <b>110.7</b> Chan <b>44</b>	APP CRS <b>330°</b>	Rwy Idg <b>10083</b> TDZE <b>16</b> Apt Elev <b>19</b>
---	------------------------	--

# ILS or LOC RWY 33L

GENERAL EDWARD LAWRENCE LOGAN INTL (BOS)

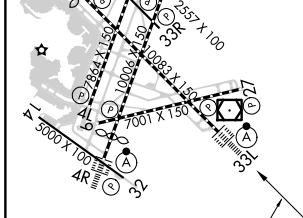
RADAR required for procedure entry. DME required.		ALSIF-2 	MISSED APPROACH: Climb to 1500 then climbing right turn to 3000 on BOS VOR/DME R-030 to WAXEN/BOS 14 DME and hold.		
D-ATIS <b>135.0</b>	BOSTON APP CON <b>120.6 263.1</b>	BOSTON TOWER <b>128.8 257.8 (WEST)</b> <b>132.225 257.8 (EAST)</b>	GND CON <b>121.75 121.9</b>	CLNC DEL <b>121.65 257.8</b>	CPDLC



NE-1, 15 MAY 2025 to 12 JUN 2025

NE-1, 15 MAY 2025 to 12 JUN 2025

ELEV 19	<b>D</b>	TDZE 16
---------	----------	---------



TDZ/CL Rws 4R, 15R and 33L  
REIL Rws 4L, 27 and 32  
MIRL Rwy 15L-33R  
HIRL Rws 4L-22R, 4R-22L,  
9-27, 14-32 and 15R-33L

FAF to MAP 4.5 NM

Knots	60	90	120	150	180
Min:Sec	4:30	3:00	2:15	1:48	1:30

1500	3000	WAXEN	VGSI and ILS glidepath not coincident (VGSI Angle 3.00/TCH 68).		
		BOS R-030		BENNN I-LIP 15 RADAR	
CATEGORY		A	B	C	D
S-ILS 33L		216/18 200 (200-1/2)			
S-LOC 33L		460/24 444 (500-1/2)		460/45 444 (500-7/8)	