

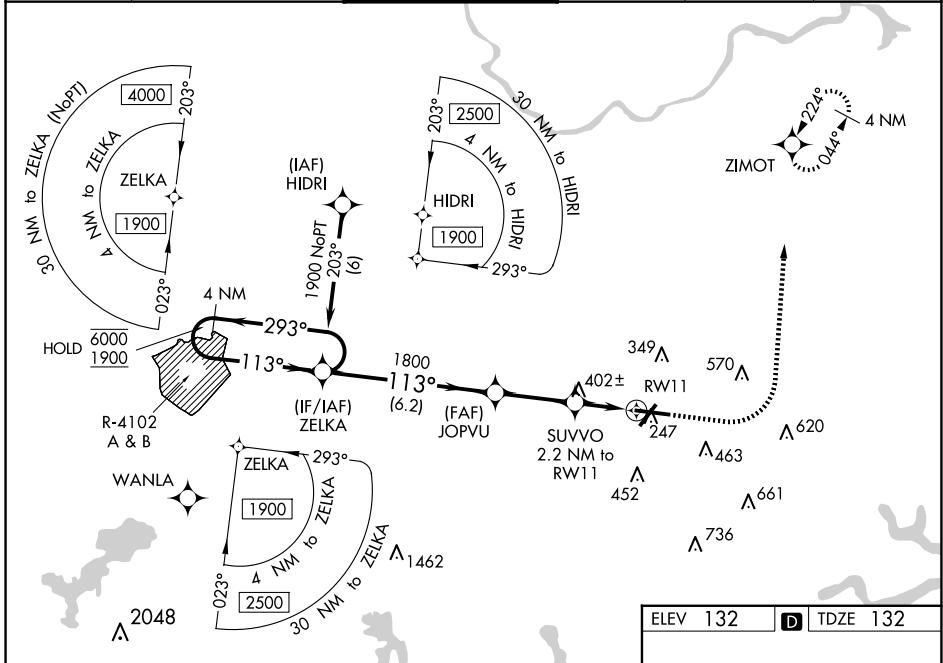
WAAS CH <b>87000</b> <b>W11A</b>	APP CRS <b>113°</b>	Rwy Idg TDZE <b>132</b> Apt Elev <b>132</b>	<b>7011</b>
----------------------------------------	------------------------	---------------------------------------------------	-------------

# RNAV (GPS) Z RWY 11

LAURENCE G HANSCOM FLD (BED)

RNP APCH-GPS.		MALSR	MISSED APPROACH: Climb to 1000 then climbing left turn to 2000 direct ZIMOT and hold.
▼	For uncompensated Baro-VNAV systems, LNAV/VNAV NA below -19° C or above 54° C.		
▲	For inop ALS, increase all LNAV/VNAV Cats visibility to RVR 5500.		

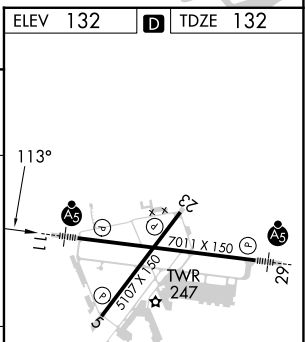
ATIS <b>124.6</b>	BOSTON APP CON <b>124.4 279.6</b>	HANSCOM TOWER ★ <b>118.5 (CTAF) 0 257.2</b>	GND CON <b>121.7</b>	CLNC DEL <b>121.85</b>	UNICOM <b>122.95</b>
----------------------	--------------------------------------	------------------------------------------------	-------------------------	---------------------------	-------------------------



NE-1, 15 MAY 2025 to 12 JUN 2025

NE-1, 15 MAY 2025 to 12 JUN 2025

VGSI and RNAV glidepath not coincident (VGSI Angle 3.00/TCH 67).		1000	2000	ZIMOT
4 NM Holding Pattern				
GP 3.00° TCH 50				
CATEGORY	A	B	C	D
LPV DA		384/24	252 (300-½)	
LNAV/VNAV DA		474/30	342 (400-¾)	
LNAV MDA	660/24	528 (600-½)	660/55	528 (600-1)
CIRCLING	720-1	588 (600-1)	880-2¼ 748 (800-2¼)	920-2½ 788 (800-2½)



MIRL Rwy 5-23  
HIRL Rwy 11-29  
REIL Rws 5 and 23