

APP CRS	Rwy Idg	<b>5107</b>
<b>233°</b>	TDZE	<b>128</b>
	Apt Elev	<b>132</b>

# RNAV (GPS) RWY 23

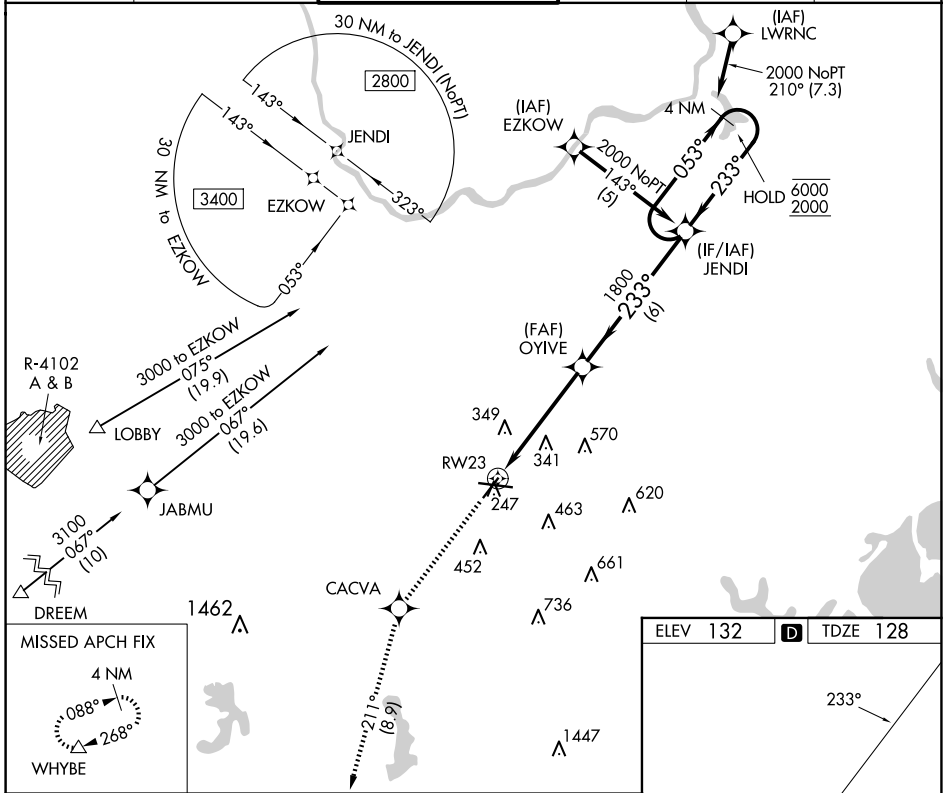
LAURENCE G HANSCOM FLD (BED)

RNP APCH - GPS.

**⚠** Rwy 23 helicopter visibility reduction below 3/4 SM NA.

MISSED APPROACH: Climb to 3000 direct CACVA and on track 211° to WHYBE and hold.

ATIS <b>124.6</b>	BOSTON APP CON <b>124.4 279.6</b>	HANSCOM TOWER ★ <b>118.5 (CTAF) 257.2</b>	GND CON <b>121.7</b>	CLNC DEL <b>121.85</b>	UNICOM <b>122.95</b>
----------------------	--------------------------------------	--	-------------------------	---------------------------	-------------------------



3000	CACVA	tr 211°	WHYBE	VGSI and descent angles not coincident (VGSI Angle 3.20/TCH 55).	4 NM Holding Pattern
↑	✦		△		
RW23		1.6 NM to RW23	OYIVE	053° → 6000	← 233° 2000
		3.04° TCH 53	1800		
		1.6 NM	3.5 NM	6 NM	

ELEV 132	<b>D</b>	TDZE 128
----------	----------	----------

MIRL Rwy 5-23  
HIRL Rwy 11-29  
REIL Rws 5 and 23

CATEGORY	A	B	C	D
LNAV MDA	640-1	512 (600-1)	640-1 3/8	512 (600-1 3/8)
<b>C</b> CIRCLING	740-1 608 (700-1)	800-1 668 (700-1)	880-2 1/4 748 (800-2 1/4)	920-2 1/2 788 (800-2 1/2)

NE-1, 15 MAY 2025 to 12 JUN 2025

NE-1, 15 MAY 2025 to 12 JUN 2025