

COPTER ILS or LOC RWY 6

BRADLEY INTL (BDL)

LOC/DME I-BDL	APP CRS	Rwy Idg	9509
111.1	058°	TDZE	173
Chan 48		Apt Elev	173

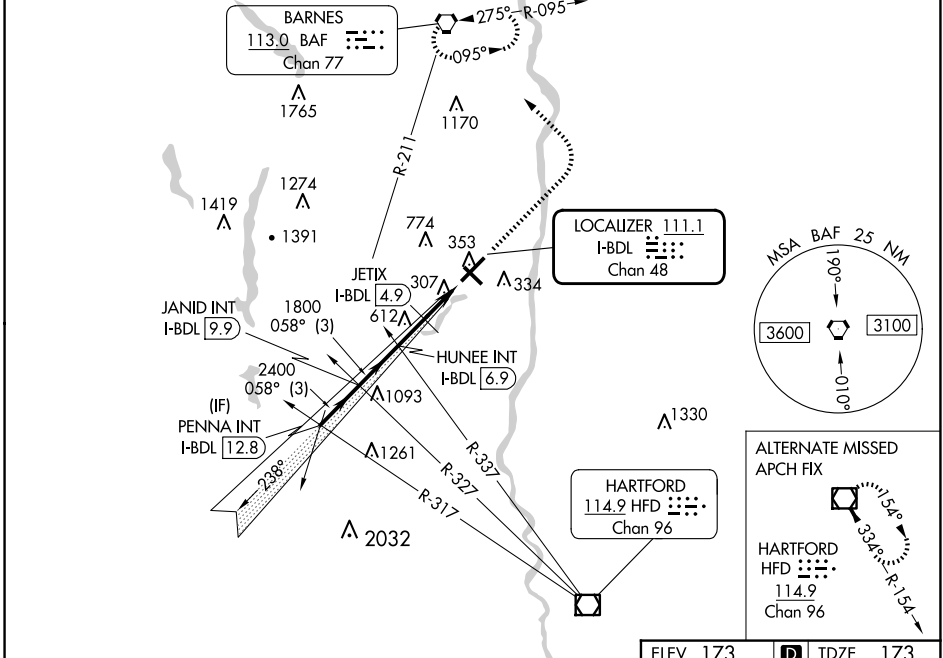
RADAR required for procedure entry.

For inop ALS, increase H-ILS 6 visibility to RVR 2400 and H-LOC 6 visibility to RVR 4000.

ALSF-2

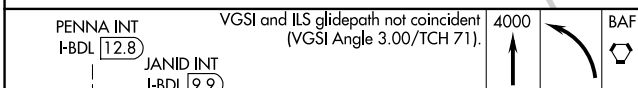
MISSED APPROACH: Climb to 4000 then left turn direct BAF VORTAC and hold.

D-ATIS	BRADLEY APP CON	BRADLEY TOWER	GND CON	CLNC DEL	CPDLC
118.15	123.95 290.55 (061°-240°)	120.3 351.8	121.9 348.6	121.75 322.3	
	125.35 281.5 (241°-060°)				



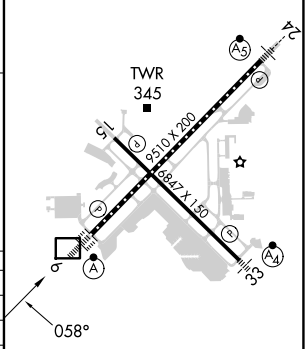
NE-1, 15 MAY 2025 to 12 JUN 2025

NE-1, 15 MAY 2025 to 12 JUN 2025



PENNA INT I-BDL	JANID INT I-BDL	HUNEE INT I-BDL	JETIX I-BDL	I-BDL	I-BDL
12.8	9.9	6.9	4.9	2.9	1.9
<p>GS 3.00° HCH 54</p> <p>3 NM 3 NM 2 NM 1.9 NM 1 NM</p>					

ELEV 173	D TDZE 173
----------	-------------------



CATEGORY	COPTER	
H-ILS 6	273/12	100 (100-¼)
H-LOC 6	1160/24	987 (1000-½)
H-ILS 6	CAT II RA 101	
JETIX FIX MINIMUMS (DME REQUIRED)		
H-LOC 6	560/24	387 (400-½)

TDZ/CL Rwy 6 and 24
HIRL Rwys 6-24 and 15-33
REIL Rwys 6 and 15

COPTER ILS CATEGORY II - SPECIAL AIRCREW & AIRCRAFT CERTIFICATION REQUIRED

FAF to MAP 4.9 NM					
Knots	45	60	75	90	105
Min:Sec	6:32	4:55	3:55	3:16	2:48