


LOC I-BAF 111.9	APP CRS 204°	Rwy Idg 8919
		TDZE 270
		Apt Elev 270

ILS or LOC RWY 20

WESTFIELD-BARNES RGNL (BAF)

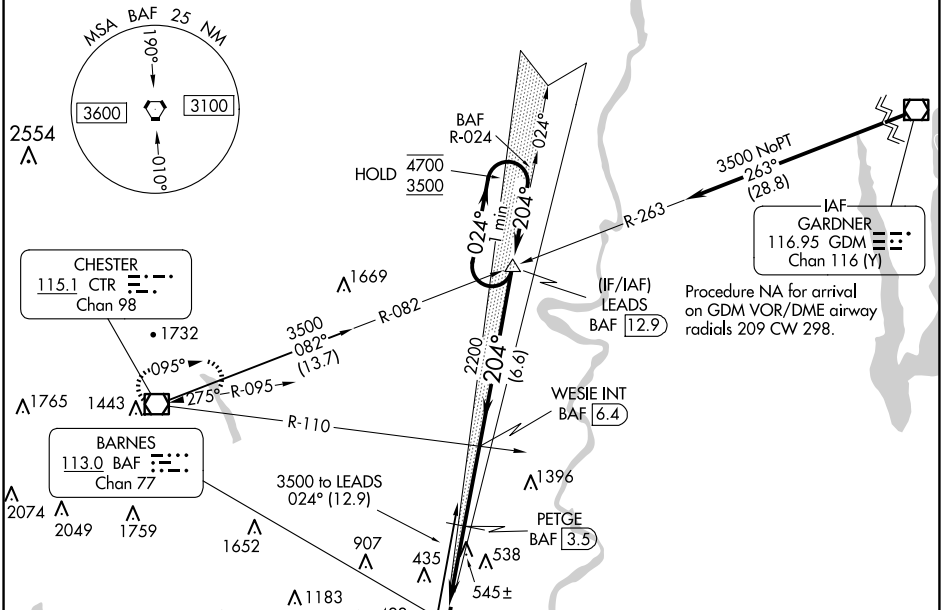
⚠ Circling Rwy 15 NA at night. DME from BAF VORTAC. DME use requires simultaneous reception of I-BAF and BAF DME. For inop ALS, increase S-ILS 20 Cat E visibility to RVR 4000; increase S-LOC 20 Cat E visibility to 3 SM; increase PETGE fix minimums S-LOC 20 Cat E visibility to 1 1/2 SM.

⚠ -21°C

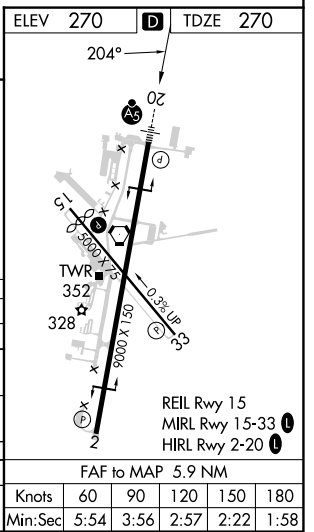
MALSR 

MISSED APPROACH: Climb to 1300 then climbing right turn to 4000 direct CTR VOR/DME and hold, continue climb-in-hold to 4000.

ATIS 127.1 263.15	BRADLEY APP CON 125.35 281.5	WESTFIELD TOWER * 125.075 251.1	GND CON 121.7 289.4	CLNC DEL 121.7	CTAF 118.9
-----------------------------	--	---	-------------------------------	--------------------------	----------------------



ELEV 270	TDZE 270
1300	4000
CTR	*LOC only.
WESIE INT BAF 6.4	LEADS BAF 12.9
PETGE BAF 3.5	One Minute Holding Pattern
BAF 0.5	BAF 2
2200	204°
2200	204°
4700	3500
GS 3.00°	TCH 50
1.5 NM	1.5 NM
2.9 NM	6.6 NM
1260	
520/24	250 (300-1/2)
1260/40	1260/55
990 (1000-3/4)	990 (1000-1)
1260-1 1/4	1260-1 1/2
990 (1000-1 1/4)	990 (1000-1 1/2)
990 (1000-3)	1660-3 1390 (1400-3)
PETGE FIX MINIMUMS (DME REQUIRED)	
800/24	530 (600-1/2)
800/55	530 (600-1)
1160-2 3/4	1660-3 1390 (1400-3)
890 (900-2 3/4)	
FAF to MAP 5.9 NM	
Knots	60 90 120 150 180
Min:Sec	5:54 3:56 2:57 2:22 1:58



NE-1, 15 MAY 2025 to 12 JUN 2025

NE-1, 15 MAY 2025 to 12 JUN 2025