

LOC I-BAF 111.9	APCH CRS 204°	Rwy ldg TDZE Arprt Elev 8919 270 270	[USAF]	WESTFIELD-BARNES RGNL (KBAF)
---------------------------	-------------------------	--------------------------------------------------------------------------	--------	------------------------------

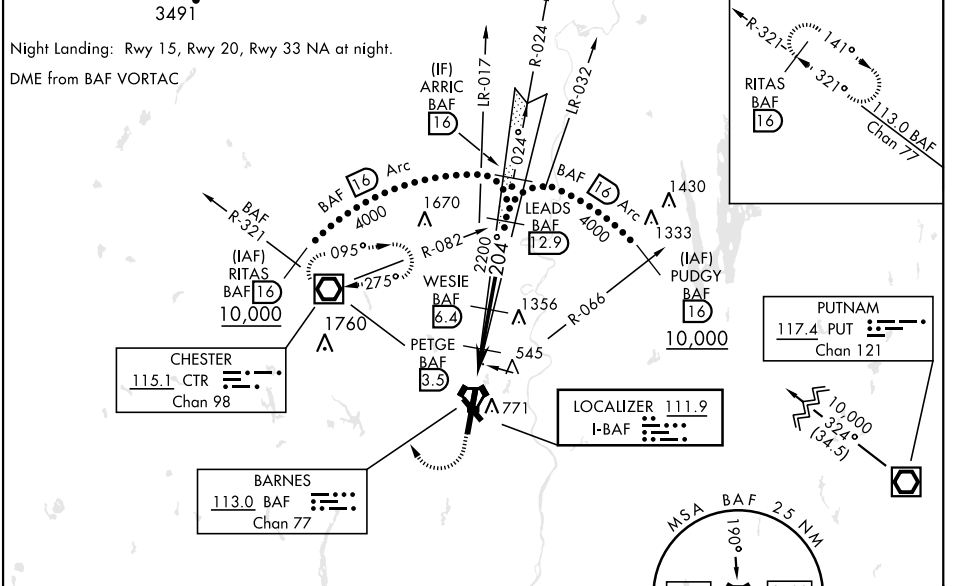
*When ALS inop, increase CAT E vis to 1/4 miles.
 **When ALS inop, increase CAT CD vis to 1/2 miles, CAT E vis to 3 miles.

MALSRR MISSED APPROACH: Climb to 1300, then climbing right turn to 4000 direct CTR VOR/DME and hold, continue climb in hold to 4000. (TACAN actf climb to 1300, then climbing right turn to 4000 via hdg 010° and BAF VORTAC R-321 to RITAS and hold.)

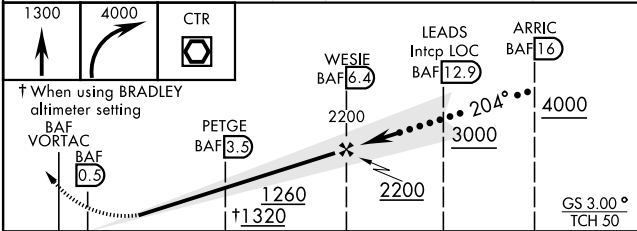
ATIS 127.1 263.15	BRADLEY APP CON 125.35 281.5	WESTFIELD TOWER ★ 125.075 (CTAF) 0 251.1	GND CON 121.7 289.4
-----------------------------	----------------------------------------	----------------------------------------------------	-------------------------------

*** When ALS inop, increase CAT E vis to 3 miles.
 When local altimeter setting not received, use Bradley Intl altimeter setting.
3491

TACAN MISSED APPROACH FIX



EMERG SAFE ALT 100 NM 7000



CATEGORY	C	D	E
S-ILS 20*	520/50	250	(300-1)
S-LOC 20**	800/55	530	(600-1/4)
C CIRCLING	1160-2 3/4	890 (900-2 3/4)	1660-3 1390 (1400-3)
BRADLEY INTL ALTIMETER			
S-ILS 20*	564/50	294	(300-1)
S-LOC 20***	860-1/4	590	(600-1/4)
C CIRCLING	1200-2 3/4 930 (1000-2 3/4)	1200-3 930 (1000-3)	1680-3 1410 (1500-3)

ELEV 270	TDZE 270
Rwy 15 ldg 4510'	204°
Rwy 20 ldg 8919'	305
	332
	337
	338
	339
	340
	341
	342
	343
	344
	345
	346
	347
	348
	349
	350
	351
	352
	353
	354
	355
	356
	357
	358
	359
	360
	361
	362
	363
	364
	365
	366
	367
	368
	369
	370
	371
	372
	373
	374
	375
	376
	377
	378
	379
	380
	381
	382
	383
	384
	385
	386
	387
	388
	389
	390
	391
	392
	393
	394
	395
	396
	397
	398
	399
	400

HIRL Rwy 2-20
 MIRL Rwy 15-33
 REIL Rwy 15
 FAF to MAP 5.9 NM
 Knots 120 140 160 180 200
 Min:Sec 2:57 2:32 2:13 1:58 1:46

NE-1, 15 MAY 2025 to 12 JUN 2025

NE-1, 15 MAY 2025 to 12 JUN 2025