

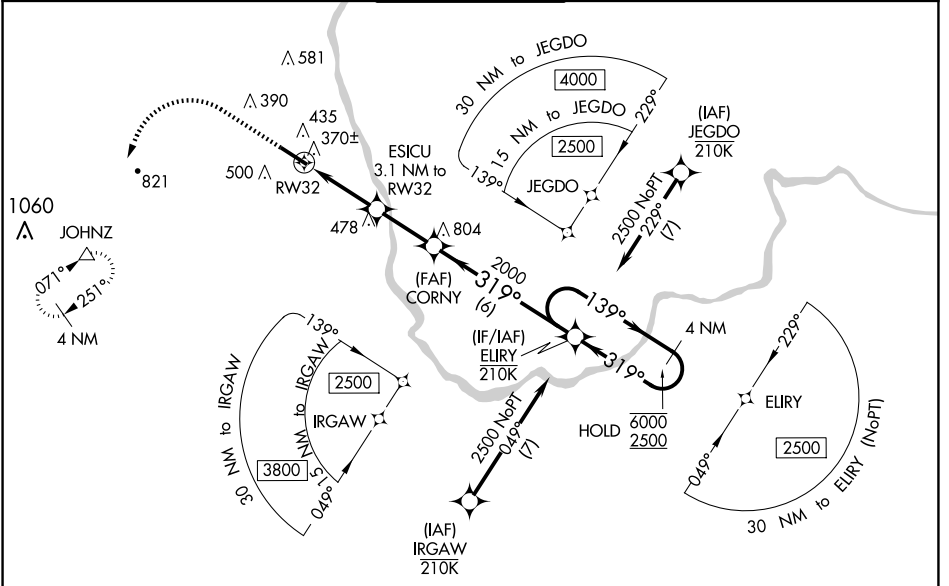
WAAS CH 73030 W32A	APP CRS 319°	Rwy Idg TDZE Apt Elev	5650 193 200
---------------------------------	------------------------	-----------------------------	---

RNAV (GPS) RWY 32

BOIRE FLD (ASH)

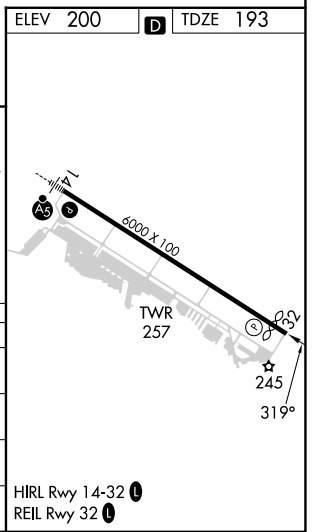
RNP APCH.		MISSED APPROACH: Climb to 800 then climbing left turn to 4000 direct JOHNZ and hold, continue climb-in-hold to 4000.		
⚠ Rwy 32 helicopter visibility reduction below ¾ SM NA. For uncompensated Baro-VNAV systems, LNAV/VNAV NA below -15°C or above 54°C.				

ATIS 125.1	BOSTON APP CON 124.9 269,075	NASHUA TOWER ★ 133.2 (CTAF) ①	GND CON 121.8	CLNC DEL 121.8
----------------------	--	---	-------------------------	--------------------------



NE-1, 15 MAY 2025 to 12 JUN 2025

NE-1, 15 MAY 2025 to 12 JUN 2025



800	4000	JOHNZ *LNAV only.	ELIRY	4 NM
↑ 800 ↙ 4000 △ JOHNZ		ESICU 3.1 NM to RW32 *1.2 NM to RW32 *1220	CORNY 2000 319° 2000	ELIRY Holding Pattern 139° → 6000 ← 319° 2500 GP 3.00° TCH 45
RW32 ↙ 1.2 NM ↘ 1.9 NM ↘ 2.4 NM ↘ 6 NM				
CATEGORY	A	B	C	D
LPV DA		477-7/8	284 (300-7/8)	
LNAV/VNAV DA		633-1 1/4	440 (500-1 1/4)	
LNAV MDA	620-1	427 (500-1)	620-1 1/4	427 (500-1 1/4)
CIRCLING	820-1 620 (700-1)	840-1 640 (700-1)	900-2 700 (700-2)	1000-2 1/2 800 (800-2 1/2)