

ACK VOR/DME 116.2 Chan 109	APP CRS 240°	Rwy Idg 6303 TDZE 48 Apt Elev 48
------------------------------------------------	------------------------	-------------------------------------------------------------

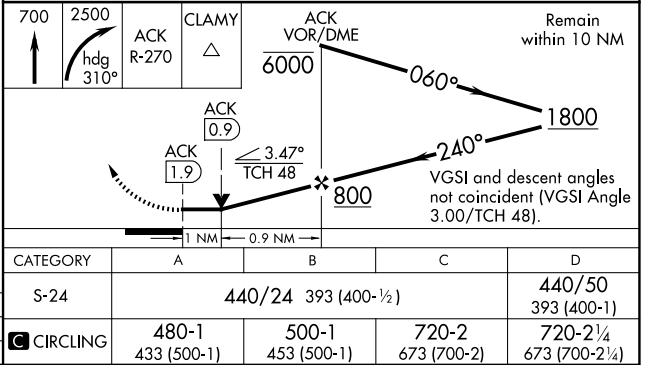
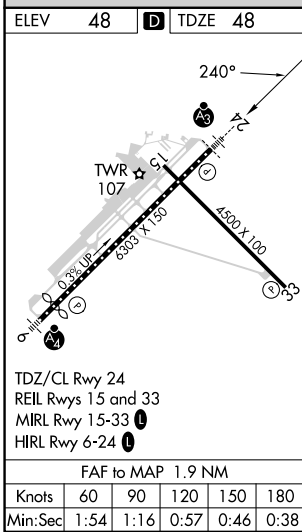
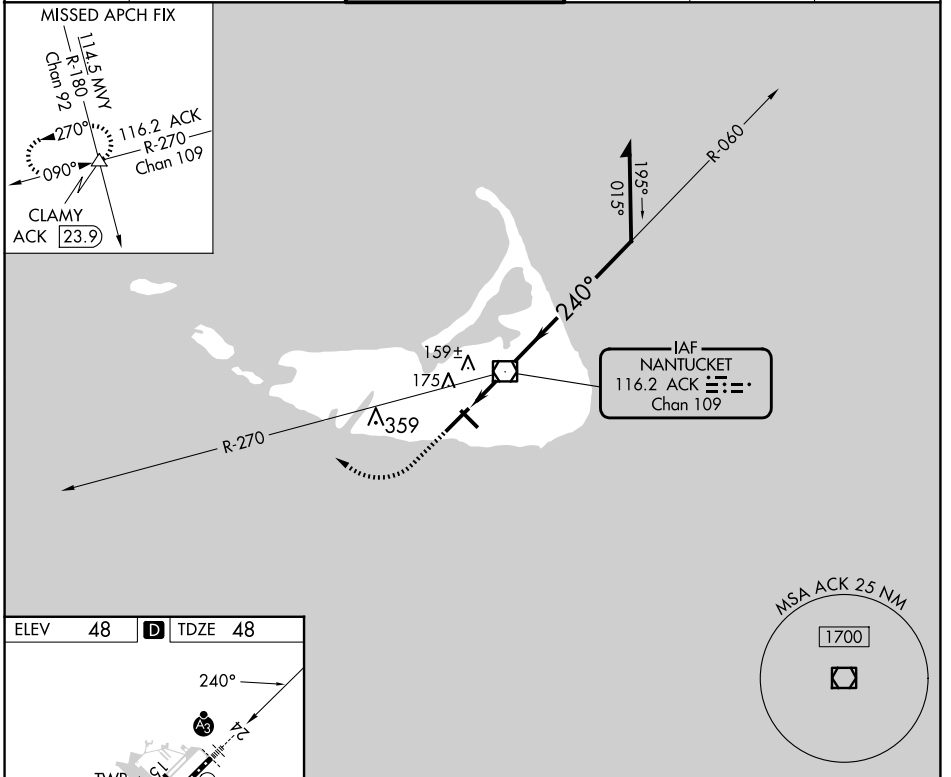
VOR RWY 24

NANTUCKET MEML (ACK)

⚠ When local altimeter setting not received, use Hyannis altimeter setting and increase all MDA 80 feet; increase S-24 Cat C visibility to RVR 4000; increase Circling Cats C/D visibility ¼ SM. VDP NA when using Hyannis altimeter setting. For Inoperative SSALR, increase S-24 Cat D visibility to RVR 6000.

SSALR
 MISSED APPROACH: Climb to 700 then climbing right turn to 2500 via heading 310° and ACK VOR/DME R-270 to CLAMY INT/ACK 23.9 DME and hold.

ATIS 127.5	BOSTON APP CON 126.1 318.1	NANTUCKET TOWER ★ 118.3 (CTAF) 0	GND CON 132.5	CLNC DEL 119.375	UNICOM 122.95
----------------------	--------------------------------------	--------------------------------------------	-------------------------	----------------------------	-------------------------



NE-1, 15 MAY 2025 to 12 JUN 2025

NE-1, 15 MAY 2025 to 12 JUN 2025