

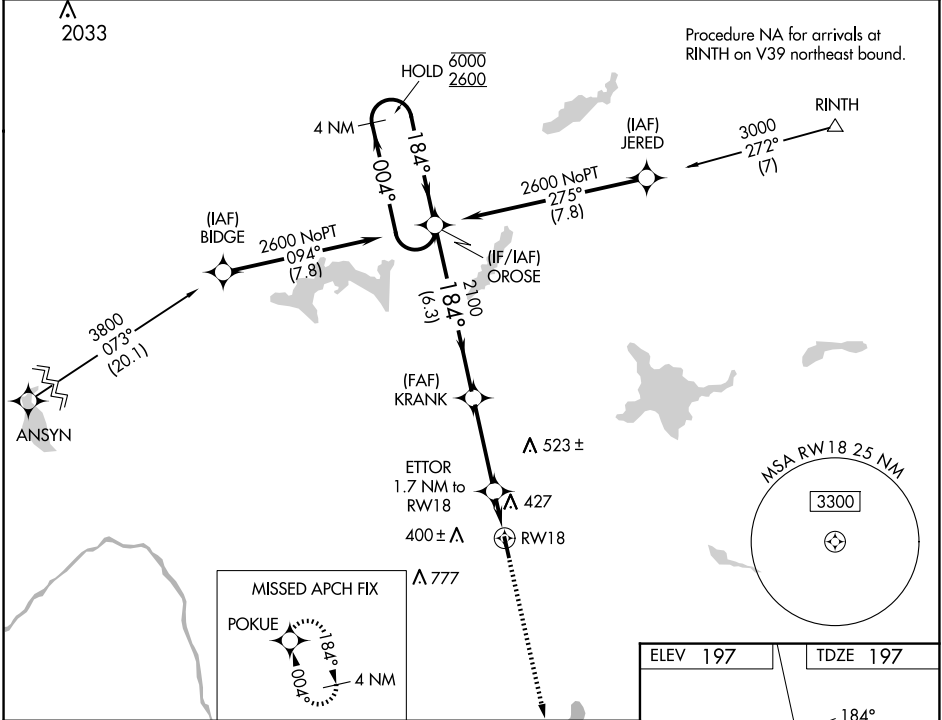
WAAS CH 53342 W18A	APP CRS 184°	Rwy Idg TDZE Apt Elev	4003 197 197
--	------------------------	-----------------------------	---

RNAV (GPS) RWY 18

PITTSFIELD MUNI (2B7)

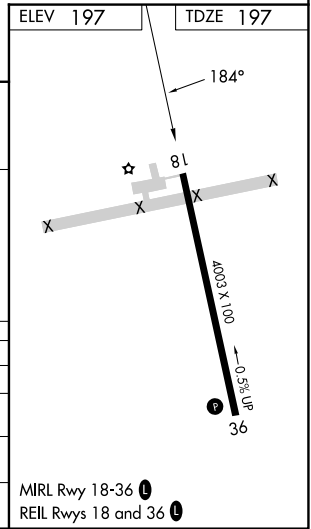
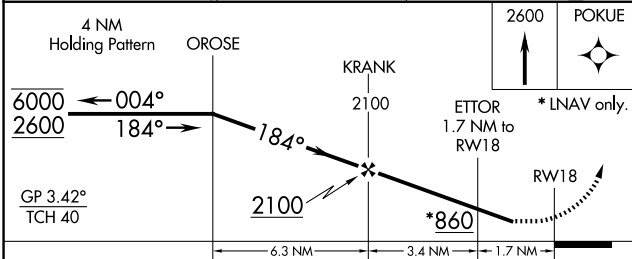
RNP APCH.	MISSED APPROACH: Climb to 2600 direct POKUE and hold.
▼ Rwy 18 helicopter visibility reduction below 3/4 SM NA. Baro-VNAV NA. ▲ NA Use Bangor altimeter setting; when not received procedure NA.	

BGR ASOS 127.75	BANGOR APP CON 118.925 239.3	UNICOM 122.8 (CTAF) 0
---------------------------	--	--



NE-1, 15 MAY 2025 to 12 JUN 2025

NE-1, 15 MAY 2025 to 12 JUN 2025



CATEGORY	A	B	C	D
LPV DA	610-1 1/8	413 (500-1 1/8)		NA
LNAV/VNAV DA	785-1 3/4	588 (600-1 3/4)		NA
LNAV MDA	740-1	543 (600-1)	740-1 5/8 543 (600-1 5/8)	NA
CIRCLING	800-1	603 (700-1)	880-2 683 (700-2)	NA