

WAAS CH <b>65723</b> <b>W34A</b>	APP CRS <b>337°</b>	Rwy Idg <b>3008</b> TDZE <b>526</b> Apt Elev <b>533</b>
--	------------------------	---

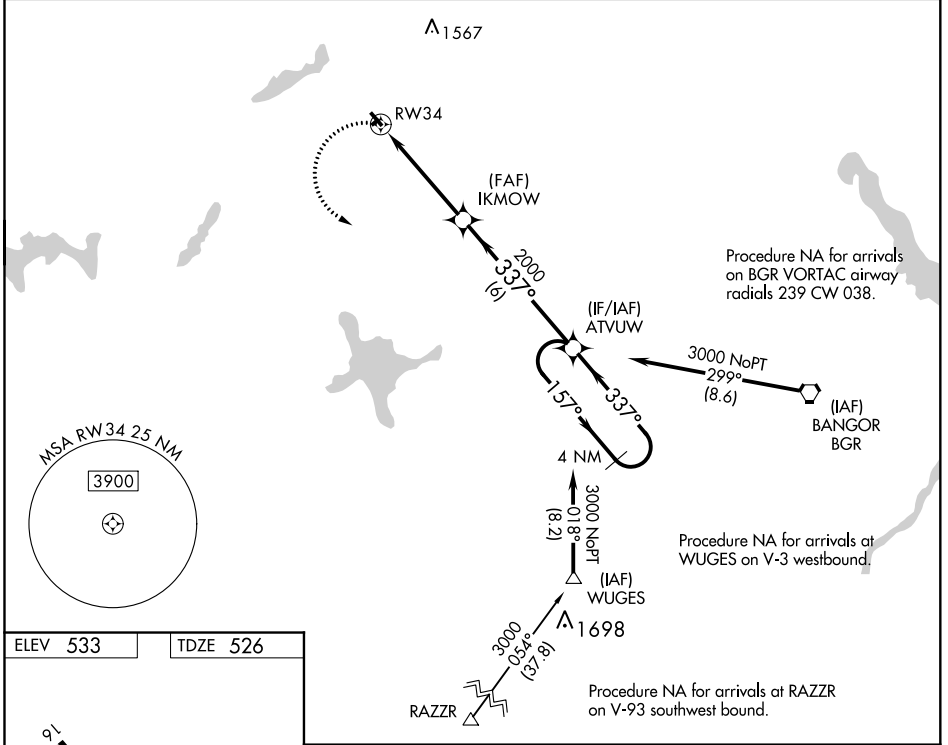
# RNAV (GPS) RWY 34

DEXTER RGNL (1B)

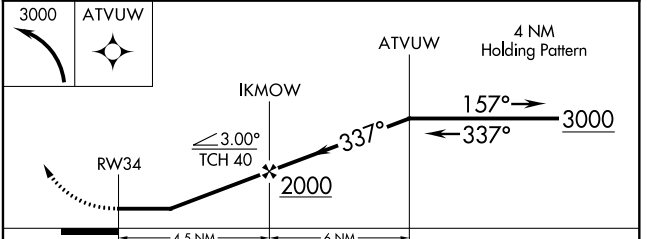
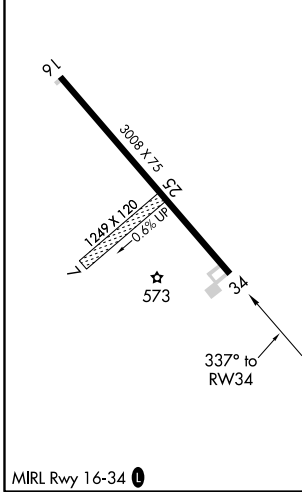
**Procedure NA at night. DME/DME RNP-0.3 NA. Use Bangor altimeter setting, when not received, use Augusta altimeter setting and increase all MDA 40 feet, increase Circling Cat B visibility 1/4 mile. Rwy 16, 34 helicopter visibility reduction below 1 SM NA. Circling NA to Rwy 7 and 25.**

**MISSED APPROACH: Climbing left turn to 3000 direct ATVUW and hold.**

BANGOR APP CON <b>118.925 239.3</b>	UNICOM <b>122.8 (CTAF) 1</b>
--	---------------------------------



ELEV <b>533</b>	TDZE <b>526</b>
-----------------	-----------------



CATEGORY	A	B	C	D
LP MDA	980-1	454 (500-1)	NA	
LNAV MDA	1140-1	614 (700-1)	NA	
CIRCLING	1220-1 687 (700-1)	1320-1 787 (800-1)	NA	

NE-1, 22 APR 2021 to 20 MAY 2021

NE-1, 22 APR 2021 to 20 MAY 2021