

WAAS CH <b>82414</b> <b>W06A</b>	APP CRS <b>058°</b>	Rwy ldg <b>4500</b> TDZE <b>933</b> Apt Elev <b>933</b>
--	------------------------	---

# RNAV (GPS) RWY 6

SULLIVAN RGNL (UUV)

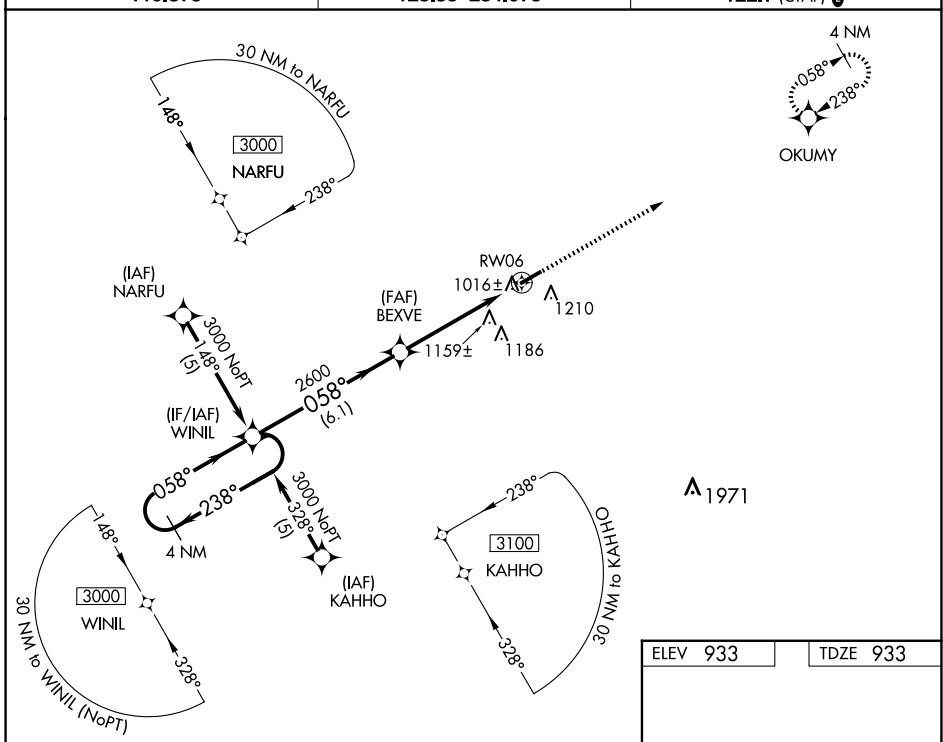
**▼** Circling to Rwy 24 NA at night. For uncompensated Baro-VNAV systems, LNAV/VNAV NA below -16°C (4°F) or above 54°C (130°F). DME/DME RNP-0.3 NA. Visibility reduction by helicopters NA.  
**▲ NA** Baro-VNAV and VDP NA when using Rolla Nil altimeter setting. When local altimeter setting not received, use Rolla Nil altimeter setting and increase all DA 98 feet and all MDA 100 feet, increase LPV Cat A and B visibility ½ mile and LNAV/VNAV Cat A and B visibility ¼ mile.

**MISSED APPROACH:**  
Climb to 3000 direct OKUMY and hold.

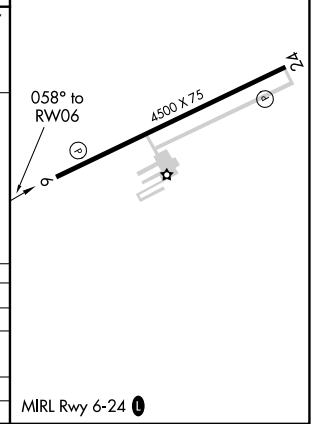
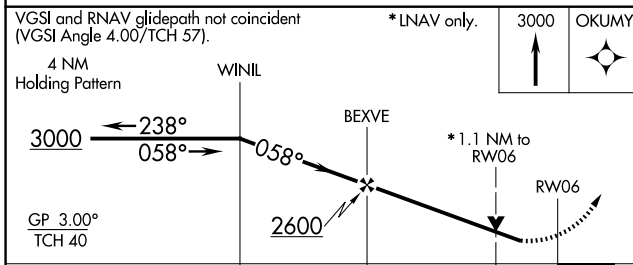
AWOS-3PT  
**119.375**

KANSAS CITY CENTER  
**128.35 284.675**

UNICOM  
**122.7 (CTAF) 0**



ELEV 933	TDZE 933
----------	----------



CATEGORY	A	B	C	D
LPV DA	1236-1	303 (400-1)		NA
LNAV/VNAV DA	1488-2	555 (600-2)		NA
LNAV MDA	1420-1	487 (500-1)		NA
CIRCLING	1520-1	587 (600-1)		NA

NC-3, 15 MAY 2025 to 12 JUN 2025

NC-3, 15 MAY 2025 to 12 JUN 2025