

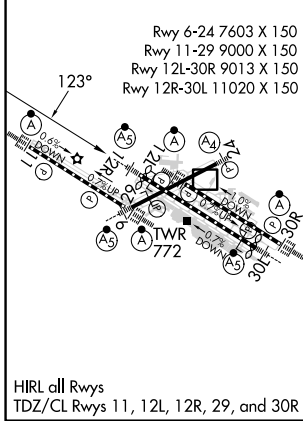
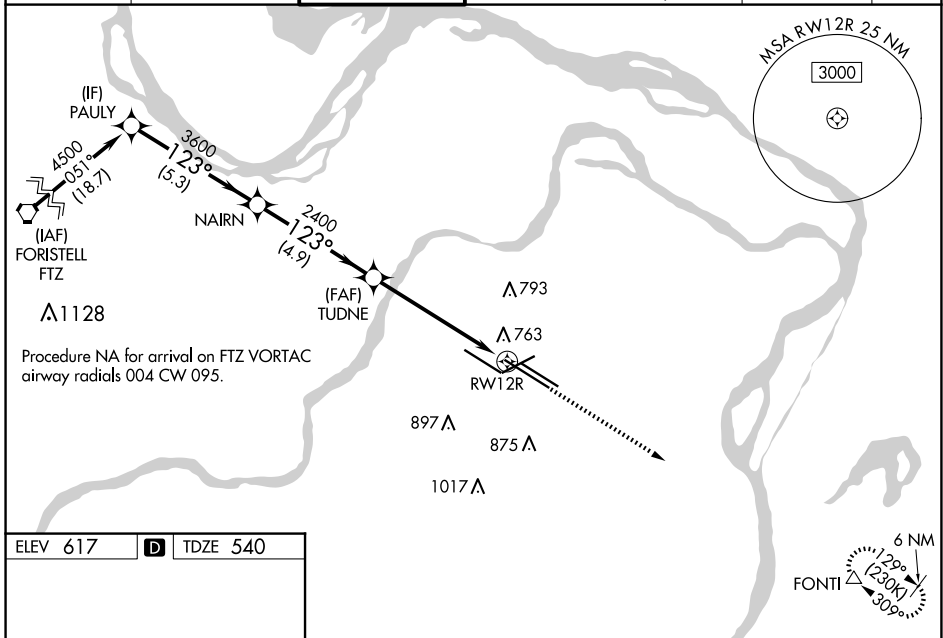
WAAS CH <b>78121</b> <b>W12B</b>	APP CRS <b>123°</b>	Rwy ldg <b>10552</b> TDZE <b>540</b> Apt Elev <b>617</b>
--	------------------------	--

# RNAV (GPS) Y RWY 12R

ST LOUIS LAMBERT INTL (STL)

<p>RNP APCH - GPS.</p> <p>▼ Rwy 12R helicopter visibility reduction below RVR 4000 NA. For uncompensated Baro-VNAV systems, LNAV/VNAV NA below -16°C or above 54°C. Simultaneous approach authorized with Rwy 11. LNAV procedure NA during simultaneous operations. Use of FD or AP required during simultaneous operations. For inop ALS, increase LPV Cat E visibility to RVR 4000, LNAV/VNAV all Cats visibility to 1½ SM, LNAV Cats A/B visibility to RVR 5500, and LNAV Cat C/D/E visibility to 1¾ SM.</p>		<p>MALSR</p>	<p>MISSED APPROACH: Climb to 5000 direct FONTI and hold, continue climb-in-hold to 5000.</p>
---	--	--------------	--

D-ATIS <b>125.025</b> <b>379.925</b>	ST. LOUIS APP CON <b>132.125 360.6</b>	ST. LOUIS TOWER <b>118.5 257.7</b>	GND CON <b>121.9 348.6</b> (Inbound) <b>121.65 377.175</b> (Outbound) <b>118.925 227.125</b> (Rwy 11/29)	CLNC DEL <b>119.5 363.1</b>	CPDLC
--	---	---------------------------------------	---	--------------------------------	-------



<p>PAULY</p> <p>VGSI and RNAV glidepath not coincident (VGSI Angle 3.00/TCH 71).</p> <p>5000</p> <p>FONTI</p>	
<p>4500</p> <p>123°</p> <p>3600</p> <p>2400</p> <p>2400</p> <p>1.3 NM to RWY 12R</p> <p>RWY 12R</p> <p>GP 3.00° TCH 54</p> <p>5.3 NM</p> <p>4.9 NM</p> <p>4.4 NM</p> <p>1.3</p>	
CATEGORY	A B C D E
LPV DA	740/18 200 (200-½)
LNAV/VNAV DA	1103-1¼ 563 (500-1¼)
LNAV MDA	1020/40 480 (500-¾) 1020/50 480 (500-1)

NC-3, 15 MAY 2025 to 12 JUN 2025

NC-3, 15 MAY 2025 to 12 JUN 2025