

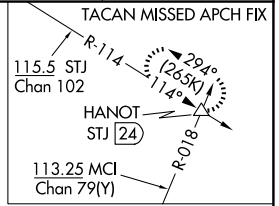
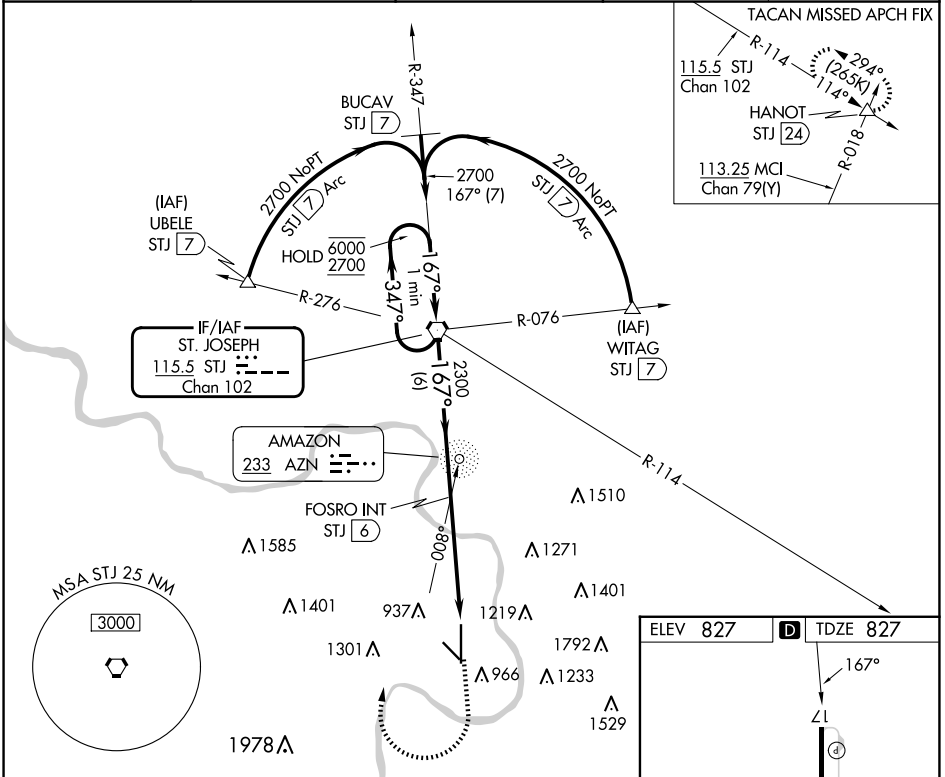
VORTAC STJ <b>115.5</b> Chan <b>102</b>	APP CRS <b>167°</b>	Rwy Idg TDZE Apt Elev <b>8061</b> <b>827</b> <b>827</b>
---	------------------------	--

# VOR or TACAN RWY 17

ROSECRANS MEML (STJ)

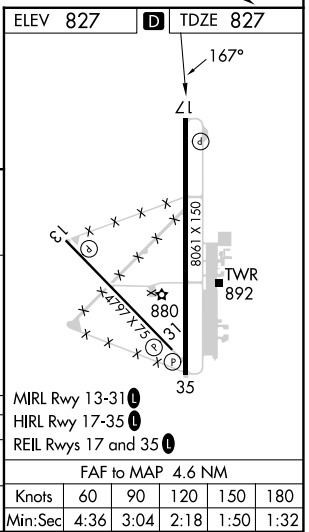
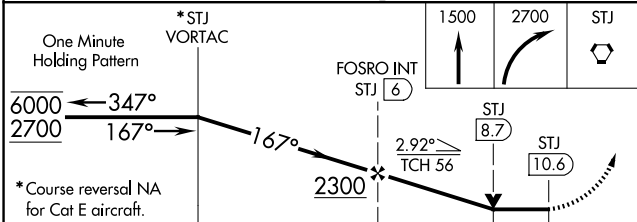
ADF or DME required.		MISSED APPROACH: Climb to 1500 then climbing right turn to 2700 direct STJ VORTAC and hold. (TACAN aircraft climb to 2300 then climbing left turn to 3100 direct HANOT INT/STJ 24 DME and hold NW, LT, 114° inbound, GPS required).		
Missed approach to STJ VORTAC NA for Cat E aircraft. ASR/PAR				

ATIS <b>125.05</b>	ST. JOSEPH APP CON * <b>120.35 360.8</b>	ST. JOSEPH TOWER * <b>126.9 (CTAF) 239.0</b>	GND CON <b>121.9</b>	UNICOM <b>122.95</b>
-----------------------	---	---	-------------------------	-------------------------



NC-3, 15 MAY 2025 to 12 JUN 2025

NC-3, 15 MAY 2025 to 12 JUN 2025



CATEGORY	A	B	C	D	E
S-17	1500-1	673 (700-1)	1500-1 7/8 673 (700-1 7/8)		
CIRCLING	1500-1	673 (700-1)	1620-2 1/4 793 (800-2 1/4)	1640-2 3/4 813 (900-2 3/4)	1760-3 933 (1000-3)

FAF to MAP 4.6 NM					
Knots	60	90	120	150	180
Min:Sec	4:36	3:04	2:18	1:50	1:32