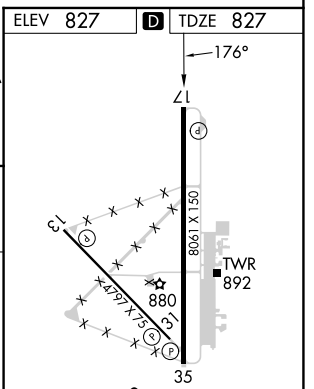
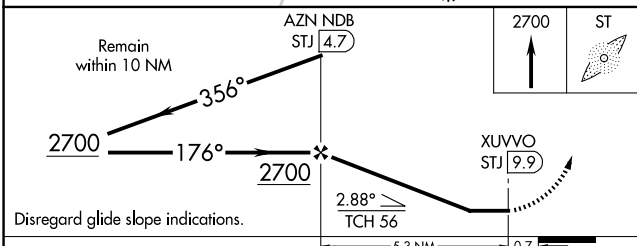
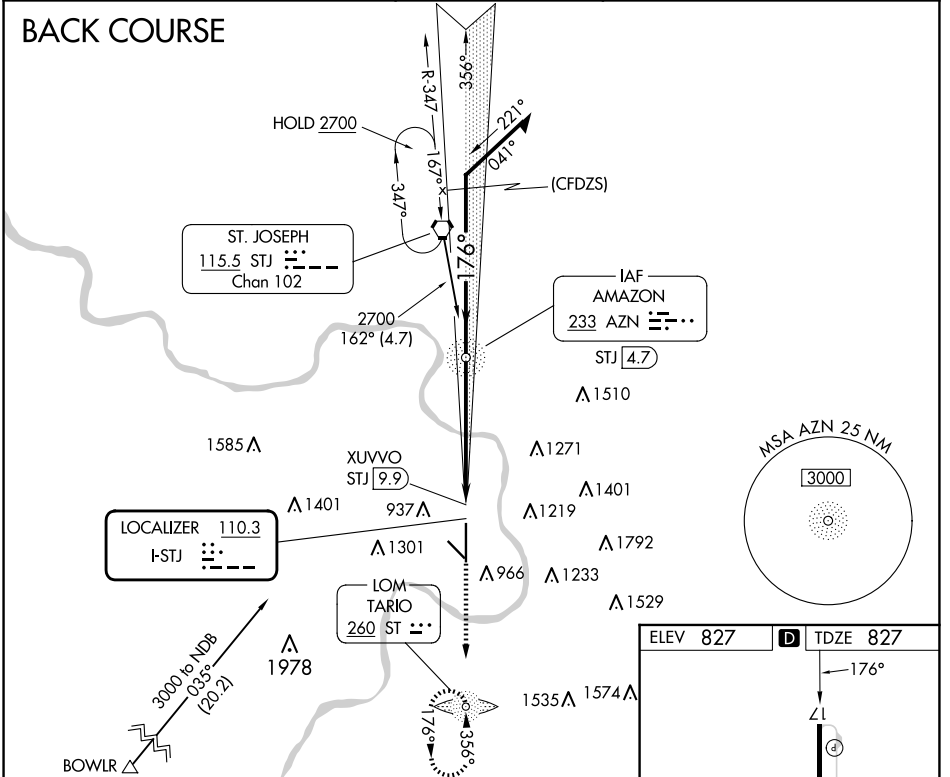


LOC I-STJ <b>110.3</b>	APP CRS <b>176°</b>	Rwy Idg TDZE Apt Elev	<b>8061</b> <b>827</b> <b>827</b>
---------------------------	------------------------	-----------------------------	---

# LOC BC RWY 17

ROSECRANS MEML (STJ)

ADF required.		MISSED APPROACH: Climb to 2700 direct ST LOM and hold.				
DME from STJ VORTAC, simultaneous reception of I-STJ and STJ DME required. ASR/PAR		ATIS <b>125.05</b>	ST. JOSEPH APP CON * <b>120.35 360.8</b>	ST. JOSEPH TOWER * <b>126.9 (CTAF) 239.0</b>	GND CON <b>121.9</b>	UNICOM <b>122.95</b>



CATEGORY	A	B	C	D	
S-17	1280-1	453 (500-1)	1280-1 $\frac{3}{8}$	453 (500-1 $\frac{3}{8}$ )	
CIRCLING	1400-1 573 (600-1)	1420-1 593 (600-1)	1620-2 $\frac{1}{4}$ 793 (800-2 $\frac{1}{4}$ )	1640-2 $\frac{3}{4}$ 813 (900-2 $\frac{3}{4}$ )	
FAF to MAP 5.3 NM					
Knots	60	90	120	150	180
Min:Sec	5:18	3:32	2:39	2:07	1:46

NC-3, 15 MAY 2025 to 12 JUN 2025

NC-3, 15 MAY 2025 to 12 JUN 2025