

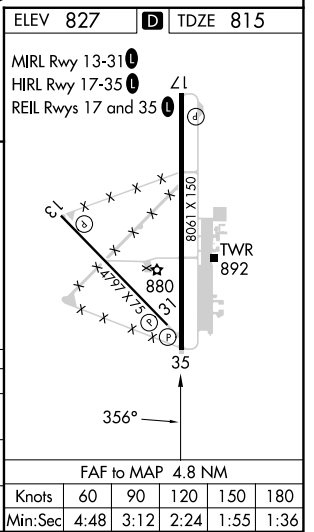
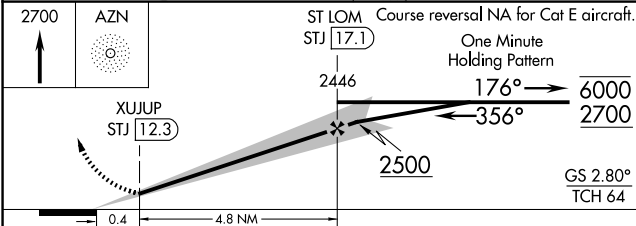
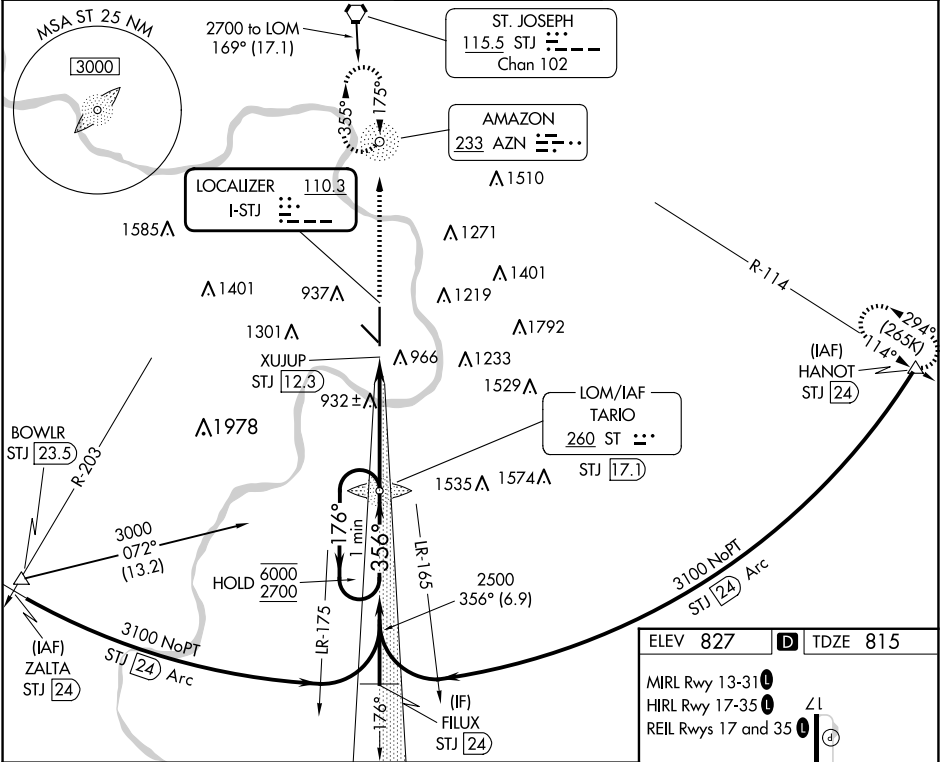
LOC I-STJ 110.3	APP CRS 356°	Rwy Idg TDZE Apt Elev	8061 815 827
---------------------------	------------------------	-----------------------------	---

ILS or LOC RWY 35

ROSECRANS MEML (STJ)

ADF or TACAN required.		MISSILE APPROACH: Climb to 2700 direct AZN NDB and hold. (TACAN aircraft climb to 2700 then climbing right turn to 3100 on STJ VORTAC R-114 to HANOT/24 DME and hold NW, LT, 114° inbound).		
DME from STJ VORTAC, simultaneous reception of I-STJ and STJ DME required.				
ASR/PAR				

ATIS 125.05	ST. JOSEPH APP CON ★ 120.35 360.8	ST. JOSEPH TOWER ★ 126.9(CTAF) 239.0	GND CON 121.9	UNICOM 122.95
-----------------------	---	--	-------------------------	-------------------------



CATEGORY	A	B	C	D	E
S-ILS 35	1015/40 200 (200-¾)				
S-LOC 35	1200/55	385 (400-1)	1200/60 385 (400-1¼)		
CIRCLING	1400-1 573 (600-1)	1420-1 593 (600-1)	1620-2¼ 793 (800-2¼)	1640-2¾ 813 (900-2¾)	1760-3 933 (1000-3)

NC-3, 15 MAY 2025 to 12 JUN 2025

NC-3, 15 MAY 2025 to 12 JUN 2025