

WAAS CH <b>63101</b> <b>W04A</b>	APP CRS <b>038°</b>	Rwy Idg TDZE Apt Elev	<b>5000</b> <b>967</b> <b>971</b>
--	------------------------	-----------------------------	---

# RNAV (GPS) RWY 4

SHENANDOAH MUNI (SDA)

RNP APCH.

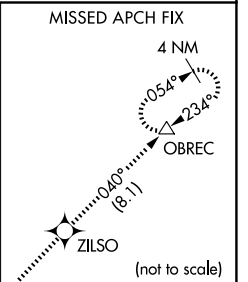
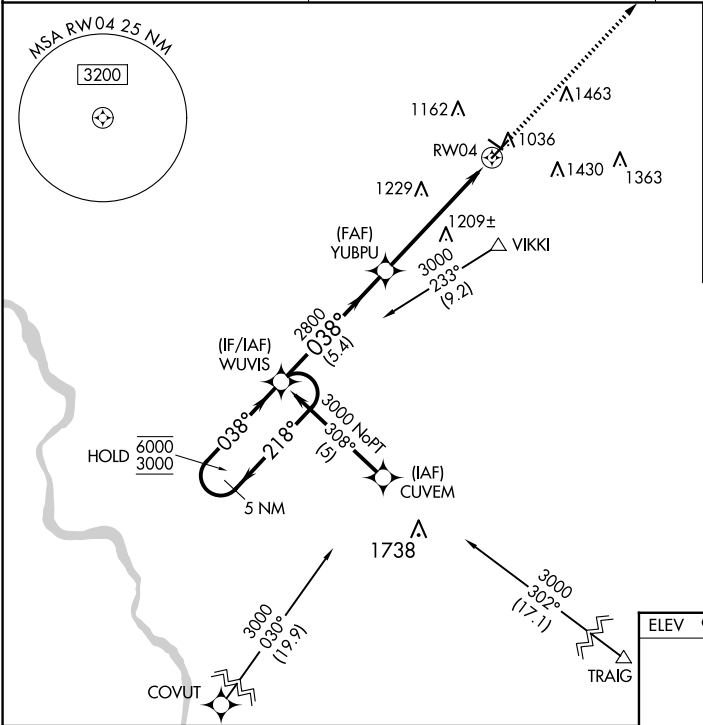
**⚠** Circling Rwy 30 NA at night. VDP NA when using Clarinda altimeter setting. Rwy 4 helicopter visibility reduction below  $\frac{3}{4}$  SM NA. When local altimeter setting not received, use Clarinda altimeter setting: increase DA to 1275 feet; increase all MDAs 60 feet.

**MISSED APPROACH:** Climb to 3000 direct ZILSO and on track 040° to OBREC and hold.

AWOS-3  
**125.525**

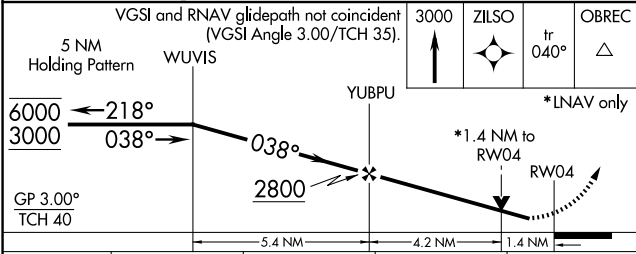
OMAHA APP CON  
**124.5 263.0**

UNICOM  
**122.8 (CTAF)**

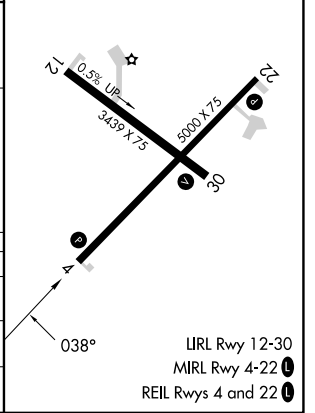


NC-3, 15 MAY 2025 to 12 JUN 2025

NC-3, 15 MAY 2025 to 12 JUN 2025



ELEV 971	TDZE 967
----------	----------



CATEGORY	A	B	C	D
LPV DA	1230-1	263 (300-1)		NA
RNAV MDA	1460-1	493 (500-1)		NA
CIRCLING	1520-1 549 (600-1)	1540-1 569 (600-1)		NA